

IMPORTANT

*Report in part or whole
cannot be quoted or
reproduced*

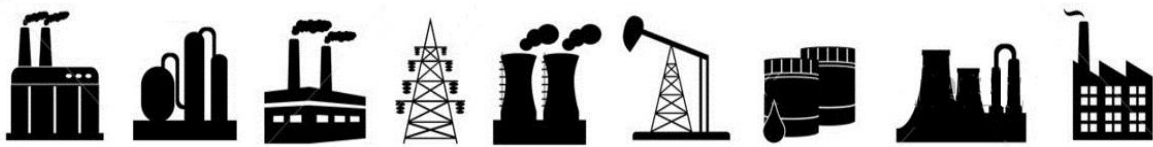
RESTRICTED

For official use only

OCTOBER 2025



**MONTHLY SURVEY OF INDUSTRIAL
PRODUCTION & EMPLOYMENT IN THE PUNJAB**



BUREAU OF STATISTICS

Planning & Development Board
Government of the Punjab, Lahore
www.bos.gop.pk

PREFACE

Bureau of statistics has been issuing this Monthly Survey of Industrial Production and Employment Report since October 1972. This report provides important statistics in respect of industrial production & employment, employment cost and other aspects of manufacturing activities e.g. consumption of raw material, export of industrial products, import of raw material and productivity of labour etc. These statistics are pre-requisite for sound economic planning as well as for measuring the performance/growth of the industrial sector (GDP estimates regarding industrial sector).

This report contains statistics regarding 45 important industries, manufacturing about almost selected items, contributing 72% of the total value added of large scale manufacturing sector in the province. This report covers more than 2000 industrial units from all over the Punjab.

This report gives information regarding General Index as compared to base period 2005-06, and comprehensive analytical note over the current status of the industrial growth at different sectors. Tables of production & employment give comparisons with the previous month and the same month of the previous year as well as comparisons among financial periods. Performance analysis of 13 major items pertaining to detailed tables & graphical explanation is given in this report.

All possible efforts have been made to incorporate the latest available data in this report. It is hoped that this report will be useful to the policy makers, planners, researchers and other users of industrial/economic data in public as well as private sector.

Suggestions for further improvements will be welcomed.

(MUHAMMAD ALI AMMER)
Director General
Bureau of Statistics
Government of the Punjab

C O N T E N T S

Sr.#	Description	Page #
i	Explanatory Note	I – IV
ii	Table of General Index of Industrial Production	1
iii	Analytical Note: Industrial Production and Employment October 2025	2 - 3

T A B L E S

1	Production Volume of Selected Items Pertaining to Large-Scale Manufacturing Sector, October 2025 VS September 2025	4 - 5
2	Production Volume of Selected Items Pertaining to Large-Scale Manufacturing Sector, October 2025 VS October 2024	6 - 7
3	Production Volume of Selected Items Pertaining to Large-Scale Manufacturing Sector, 2025-26 (Jul - Oct:) VS 2024-25 (Jul – Oct:)	8 - 9
4	Total Employment Regarding Large-Scale Industries, September 2025, October 2025 and October 2024	10
5	Total Number of Production Workers Regarding Large-Scale Industries, September 2025, October 2025 and October 2024	11
6	Average Monthly Total Employment Regarding Large-Scale Industries, 2025-26 (Jul - Oct:) VS 2024-25 (Jul - Oct:)	12
7	Average Monthly Number of Production Workers Regarding Large Scale Industries, 2025-26 (Jul - Oct:) VS 2024-25 (Jul – Oct:)	13

A N N E X U R E S

I	Performance of Cotton Textile Industry	14 - 20
II	Performance of Woollen Textile Industry	21 - 23
III	Performance of Vegetable Ghee/Cooking Oil Industry	24 - 28
IV	Performance of Beverages Industry	29 - 30
V	Performance of Sugar Industry	31 - 33
VI	Performance of Cigarettes Industry	34 - 35
VII	Performance of Cement Industry	36 - 40
VIII	Performance of Fertilizer Industry	41 - 46
IX	Performance of Footwear Industry	47 - 48
X	Performance of Leather Tanning Industry	49 - 50
XI	Performance of Paper & Paper Board Industry	51 - 52
XII	Performance of Light Engineering Industry	53 - 59
XIII	Performance of Pharmaceutical Industry	60 - 63

A P P E N D I X

A	Telephone Numbers	64
---	-------------------	----

List of Tables

Table No.	Title of Table	Page No.
1	General Index of Industrial Production	1
2	Production Volume of Selected Items Pertaining to Large-Scale Manufacturing Sector, October -2025 VS September -2025	4
3	Production Volume of Selected Items Pertaining to Large-Scale Manufacturing Sector, October -2025 VS October-2024	6
4.	Production Volume of Selected Items Pertaining to Large-Scale Manufacturing Sector 2025-26 (July- October) VS 2024-2025 (July- October)	8
5	Total Employment Regarding Selected Large-Scale Industries, September 2025, October 2025 and October 2024.	10
6	Total Number of Production Workers Regarding Selected Large-Scale Industries September 2025, October 2025 and October 2024	11
7.	Average Monthly Total Employment Regarding Selected Large-Scale Industries 2025-26 (July- October) and 2024-25 (July- October)	12
8	Average Monthly Production Workers regarding selected Large-Scale Industries 2025-26 (July- October) and 2024-25 (July- October)	13
9	Production of Man Made/Blended Yarn and Cloth	15
10	Detail of the Purchase, Sale Consumption and Stock of Cotton Bales.	17
11	Production, Purchase, Consumption, Sale and Stock of Cotton Yarn	18
12	Production .Purchase, Sale and Stock of Cotton Cloth	19
13	Employment, Wages/Salaries of Cotton Textile Industry	20
14	Manufacturing Activity of Woollen Industry	23
15	Detail of the Stock Purchase, Consumed and Sale of Edible Oil	26
16	Detail of Production, Sale and Stock of Vegetable Ghee/Cooking Oil	27
17	Employment, Wages/Salaries of Vegetable Ghee/Cooking Oil Industry	28
18	Manufacturing Activity of Beverages Industry	30
19	Manufacturing Activity of Sugar Industry	32
20	Employment, Wages/Salaries of Sugar Industry	33
21	Manufacturing Activity of Cigarettes Industry	35
22	Detail of Production, Consumption and Stock of Clinker	38
23	Detail of Production, Sale and Stock of Cement	39
24	Employment and Wages/Salaries of Cement Industry	40
25	Detail of Production, Sale and Stock of Urea and Amm. Sulphate	43
26	Detail of Production, Sale and Stock of Super Phosphate and Amm.Nitrate	44
27	Detail of Production, Sale and Stock of Nitro Phosphate	45
28	Employment Wages/Salaries of Fertilizer Industry	46
29	Manufacturing Activity of Footwear Industry	48
30	Manufacturing Activity of Leather Tanning Industry	50
31	Manufacturing Activity of Paper and Paper Board Industry	51
32	Manufacturing Activity of Light Engineering Industry	57
33	Total Employment of Light Engineering Industry	58
34	Production Workers of Light Engineering Industry	59
35	Manufacturing Activity of Pharmaceutical Industry	62
36	Employment and Wages/Salaries of Pharmaceutical Industry	63

List of Figures

Fig. No.	Title of Figures	Page No.
1	Quantum Index of Manufacturing Industries	1
2	Production of Cotton Yarn	16
3	Production of Cotton Cloth	16
4	Production of Knitting Wool	21
5	Production of Woollen Yarn	22
6	Production of Woollen and Worsted Cloth	22
7.	Production of Vegetable Ghee	24
8	Production of Cooking Oil	25
9	Production of Vegetable Ghee/Cooking Oil	25
10	Production of Fruit Juices	29
11	Production of Soft Drinks	29
12	Production of Sugar	31
13	Production of Cigarettes	34
14	Production of Clinker	36
15	Production of Cement	37
16	Production of Urea	41
17	Production of Super Phosphate	42
18	Production of Amm. Nitrate	42
19	Production of Nitro Phosphate	42
20	Production of Footwear	47
21	Production of Upper Leather	49
22	Production of Sole Leather	49
23	Production of Paper	51
24	Production of Paper Board	51
25	Production of Re-Rolled Steel	53
26	Production of Bicycles	54
27	Production of Electric Fans	55
28	Production of Electric Motors	56
29	Production of Diesel Engines	56
30	Production of Tablets	60
31	Production of Liquids	61
32	Production of Capsules	61
33	Production of Injections	61

EXPLANATORY NOTE

To have current information on production, employment and other aspects of manufacturing activities e.g. consumption of raw material, wages/salaries, export of industrial products, imports of raw material and productivity of labour etc. for economic planning, evaluation of industrial development and taking other policy related decisions, Government of the Punjab had decided in October 1972 to undertake a Monthly Survey on Industrial Production and Employment.

Prior to this Survey, the only data available on Industrial Statistics was the results of Census of Manufacturing Industries (C.M.I) that were available with the time lag of 2-3 years with a question mark on very high rate of non- response. This high rate of non-response affected the consistency of the results. Therefore, these results were of little use for current and future planning except for historical, research and academic interests/purposes. So Monthly Survey of Industrial Production and Employment was considered to be suitable for Economic Planning as well as for measuring the performance/growth of the industrial sector.

Only 15 industries and their 113 factories were selected to cover initially in October 1972. This report now contains statistics regarding 45 important industries, manufacturing about 100 selected items, contributing 72% of the total value added of large scale manufacturing sector in the province based on base year 2005-06 and covers more than 2000 industrial units from all over the Punjab.

Questionnaire

Keeping in view the pre-determined purpose the data on Industrial Inputs (raw material), Outputs (finished products), Sales, exports, Stocks, Employment & Employment Cost etc. are designed on the available information from CMI returns. These Questionnaires have been pre-tested in some of the large units manufacturing the respective items.

Methodology

Basically it is a mail enquiry. The respondents are the factory owners or the factory management (i.e. Accountants, Finance Manager, and Mill Manager etc.) The blank questionnaires of various industries are used to be mailed out to the factories for their use for the supply of the required information every month. About 60% to 70% questionnaires are received through mail. While the remaining non-responding industrial units are visited by the officers/officials of this Bureau during the third week of the following month for collection of requisite information.

Editing

The received questionnaires are statistically examined for the accuracy and consistency by comparing the production and employment levels of the current month with previous month and same month of the last year. The information of the factories which could not be collected during the month due to the absence of the concerned person or due to other reason is estimated on the basis of the last months average production or the last month information is repeated.

Tabulation

The information collected is tabulated on working sheets prepared for this purpose and also on computer for each industry/factory. Seven tables are prepared every month on production, total employment and production workers as well as comparisons are made with respect to last month, with same month of the last year and among current & previous financial years.

General index / Quantum Index of Manufacturing (QIM)

At present Punjab Bureau of Statistics is computing Index on Industrial Production using 2005-06 as base year. Index series is given in this report by using Laspayer's Index since 2006-07.

This Bureau initially prepared Index Series using 1970-71 as base year. Later on the base year was shifted to 1980-81 & then in October 2011 the base year was sifted to 2005-06. Majority of some new items are included in the new index series due to their relative weight and some items were discarded due to their negligible weights.

Formula of Quantum Index

$$QIM = \frac{\sum_{i=1}^n \frac{q_{im}}{q_{io}} w_i}{\sum_{i=1}^n w_i} \times 100$$

q_{im} = Production of i^{th} item during the current month

q_{io} = Average Production of the same i^{th} item in the base period (2005-06).

w_i = Weight of the i^{th} item in the base year (2005-06).

$\sum w_i$ = total weight of 46 large scale industries in the base period with respect to the total value added of all the industries covered in CMI in the base year (2005-06).

Final Product

Final product is a CIS report that contains QIM series, analytical note on the performance of Industrial Sector in the province, seven tables, and detailed performance report of some important industries as well.

User Agencies

- i. Ministry of Industries & Production, Government of the Pakistan, Islamabad.
- ii. Pakistan Bureau of Statistics, Government of Pakistan, Islamabad.
- iii. Provincial Bureaus of Statistics, Government of Sindh, KPK and Baluchistan.
- iv. Planning & Development Department, Government of the Punjab.
- v. Punjab Economic Research Institute (PERI).
- vi. Department of Commerce & Industry, Government of the Punjab.
- vii. State Bank of Pakistan

IMPORTANT DEFINITIONS

Factory

An entity where manufacturing process is carried out on any day of the preceding thirty days and in any part of which manufacturing process is being carried on with or without the aid of power or through chemical process. It does not include the Mine subject which comes under the operation of Mines Act 1923.

Large Scale Manufacturing Industries

Establishments where ten or more employees are working are classified as large scale industry.

Employment

This item include all full time and part time employees on the payrolls of operating manufacturing establishment during any part of the pay period of the month specified on the questionnaire. It should include all the employees on paid sick leave paid holidays, and paid vacations. Proprietors and partners of unincorporated business may not be included.

Production Workers

The “Production Workers” includes workers (up through the line-supervisor level) engaged in fabricating, processing, assembling, inspecting, receiving, storing, handling, packing, ware-housing, shipping (but no delivering), maintenance, repair, product development, auxiliary production for plant’s own use (e.g., power plant). Record keeping and other services closely associated with these production operations at the establishment covered by the report.

Non-Production Workers

The employees those are not involved directly in the manufacturing process are called non-production workers. E.g. Managers, Assistants, Clerks, Drivers, Peons, Malies and Chowkidars etc.

Employment Cost

Wages and salaries of all employees including production and non-production workers is called employment cost.

TABLE 1: GENERAL INDEX OF INDUSTRIAL PRODUCTION
FOR THE PERIOD JULY 2019 – OCTOBER 2025
(2005-06=100)

MONTH/ YEAR	2019 - 20	2020 - 21	2021 - 22	2022 - 23	2023 - 24	2024-25	2025-26
JUL:	155.5	160.2	171.1	161.6	157.5	153.6	163.4
AUG:	152.8	155.2	171.8	165.9	164.0	156.7	153.3
SEP:	159.3	169.3	171.0	170.9	163.2	157.3	159.0
OCT:	171.7	176.5	177.6	172.2	159.4	158.5	161.2
NOV:	167.8	179.5	185.1	171.5	159.8	171.4	
DEC:	182.2	216.6	213.2	221.8	208.3	203.5	
JAN:	202.2	208.5	220.5	229.3	223.6	207.2	
FEB:	203.5	207.4	225.1	238.0	224.1	210.1	
MAR:	186.9	213.6	217.8	214.3	181.5	187.1	
APR:	140.0	188.4	183.9	163.6	161.4	164.4	
MAY:	140.0	179.3	172.3	160.9	161.8	165.8	
JUN:	146.3	172.3	181.3	160.3	157.1	161.5	
Average*	166.0	184.5	189.8	183.7	175.2	173.6	159.2

* = Geometric Mean

Fig. 1 **Graph of Quantum Index of Manufacturing Industries.**

(2005-06=100)

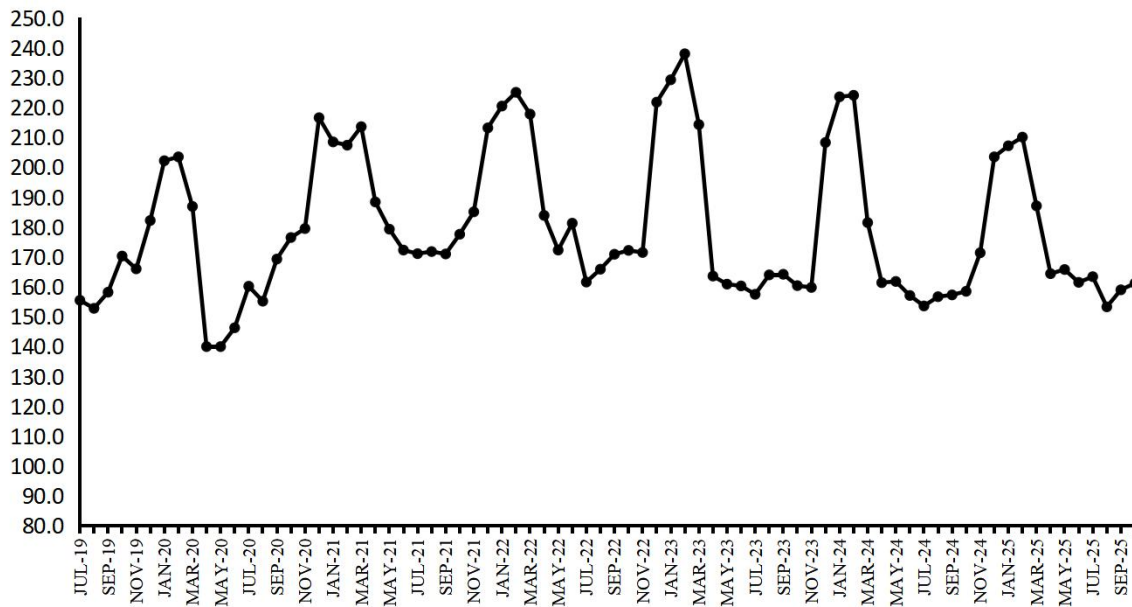


Figure: Graph of QIM for the period of July 2019 to October 2025

ANALYTICAL ANALYSIS

INDUSTRIAL PRODUCTION AND EMPLOYMENT (October 2025)

Coverage

This report covers 2029 industrial units pertaining to large scale industries which contribute about 72 percent of the total value added of Large-Scale Manufacturing sector in the Punjab.

Industrial Production Index

Industrial Production Index for the month of October-2025 stood at 161.2 against 159.0 and 158.5 as compared to September-2025 and October-2024 respectively. Index Series since July-2019 is given in Table-1 on previous page.

Production October 2025 VS September 2025 (Table-2)

Overall production during the month of October-2025 was 1.6 percent higher than September-2025.

The production was lower in case of Jute Textiles (37.9%), Electric Fans (7.7%) and Air-Conditioners (7.4%).

The production was higher in case of Cement (20.2%), Fabricated Metal Products/HMC (21.4%) and Safety Razor Blades (15.1%).

Production October 2025 VS October 2024 (Table-3)

Overall production during October-2025 was 1.9 percent higher than October-2024.

The production was lower in case of Cotton/M.M Blended Yarn (7.0%), Cloth/M.M Blended Cloth (8.7%), Jute Textiles (73.1%), Upper Leather (11.8%), Basic Inorganic Chemicals/Acids (30.8%), Fabricated Metal Products/HMC (5.6%), Tractors (12.1%) and Automobiles Cars/Trucks (14.6%).

The production was higher in case of Soft Drinks & Juices (11.1%), Cigarettes (29.6%), Fertilizers (5.9%), Paints & Varnishes (5.9%), Petroleum Products (8.8%), Cement (14.1%), Motor Cycles (18.5%), Bicycles (6.5%), Electric Fans (17.0%), Electric Motors (41.6%), Air-Conditioners (5.3%), Refrigerators/Deep Freezers (27.1%) and Safety Razor Blades (15.1%).

Production July-October 2025-26 VS July-October 2024-25 (Table-4)

Overall production during July-October (2025-26) was 1.8 percent higher than July-October (2024-25).

The production was lower in case of Cotton/M.M Blended Yarn (7.5%), Cloth/M.M Blended Cloth (8.3%), Jute Textiles (42.1%), Upper Leather (8.3%), Basic Inorganic Chemicals/Acids (31.5%), Fabricated Metal Products/HMC (6.1%), Automobiles Cars/Trucks (10.1%), Electric Meters (7.6%) and Air-Conditioners (10.9%).

The production was higher in case of Wheat Milling (6.1%), Cigarettes (36.5%), Paper & Paper Board (6.8%), Pharmaceuticals (8.1%), Fertilizers (10.6%), Petroleum Products (7.9%), Cement (11.0%), Motor Cycles (8.8%), Bicycles (6.4%), Electric Fans (8.5%), Electric Motors (30.9%), Refrigerators/Deep Freezers (24.8%) and Safety Razor Blades (5.7%).

Employment October 2025 VS September 2025 and October 2024 (Table-4)

Total employment during October-2025 was 0.1 percent and 1.2 percent lower than September-2025 and October-2024 respectively.

Average Employment July-October 2025-26 VS July-October 2024-25 (Table-7)

Average monthly employment during the period of July-October (2025-26) was 1.2 percent lower than the corresponding period of the previous year.

Table 2: Production Volume of Selected Items Pertaining to Large-Scale Manufacturing Sector, October 2025 VS September 2025

Group/Items	No. of Units Covered in Oct: 2025	Weight with 2005-06 base	Unit of Quantity	Production		Index of Production in Oct: 2025 with Sep: 2025
				Oct: 2025	Sep: 2025	
I Food Drinks & Tobacco	910					
1 Vegetable Ghee/Cooking Oil	44	5.00	M.Tons	107001	106781	100.2
i) Vegetable Ghee	44		M.Tons	84442	84327	100.1
ii) Cooking Oil	18		M.Tons	22559	22454	100.5
2 Dairy Products	8	4.13				103.5
i) Process/UHT Milk		1.62	`000` Litres	41246	42110	97.9
ii) Milk Powder		0.87	M.Tons	775	777	99.7
iii) Cheese		0.01	M.Tons	701	935	75.0
iv) Butter/ Desi Ghee		0.33	M.Tons	338	145	233.1
v) Cream		1.04	M.Tons	815	813	100.2
vi) Yoghurt		0.26	M.Tons	0		
3 Wheat Milling	776	1.25	M.Tons	853104	897671	95.0
4 Sugar	44	3.77	M.Tons	0	0	
5 Tea (Blended)	3	0.03	M.Tons	7275	7252	100.3
6 Starch & its Products	2	0.56	M.Tons	36747	36736	100.0
i) Starch			M.Tons	22591	22586	100.0
ii) Glucose			M.Tons	14156	14150	100.0
7 Soft Drinks & Juices	30	0.82	`000` Litres	213250	217304	98.1
i) 7-up Coca Cola etc.	17		`000` Litres	190898	196041	97.4
ii) Fruit Juices	16		`000` Litres	20300	19202	105.7
iii) Syrups & Squashes	2		`000` Litres	2052	2061	99.6
8 Cigarettes	3	0.59	M. Nos	1542	1531	100.7
II Textiles	312					
1 Cotton Textiles	285					
i) Cotton/M. M Blended Yarn	247	15.40	M.Tons	107460	107714	99.8
ii) Cloth/M. M Blended Cloth	48	10.20	000 Mtrs.	43913	44058	99.7
2 Woolen Textiles	21	0.52	M.Tons	796	779	102.2
i) Woolen Yarn	14		M.Tons	766	749	102.3
ii) Knitting Wool	3		M.Tons	0	0	
iii) Woolen & Worsted Cloth	14		M.Tons	30	30	100.0
iv) Carpets	5	0.77	000 Mtrs.	0	0	
3 Jute Textiles	6	0.28	M.Tons	975	1569	62.1
i) Jute Sacking				347	725	47.9
ii) Jute Hessian				488	609	80.1
iii) Jute Twine				140	235	59.6
III Leather Rubber & Plastic Products	147					
1 Leather Tanning	106					
i) Upper Leather	95	0.49	000 Sq. Mtrs.	679	684	99.3
ii) Sole Leather	11		M.Tons	16	16	100.0
2 Footwear	41	0.90	000 Pairs	3135	3132	100.1
IV Ply Wood	6	0.44	000 Sq. Feet	580	572	101.4
V Paper & Paper Board	46	4.19	M.Tons	56147	58583	95.8
1 Paper				19598	19079	102.7
i) Writing			M.Tons	8960	9852	90.9
ii) Printing			M.Tons	5067	3553	142.6
iii) Packing & Others			M.Tons	5571	5674	98.2
2 Paper Board			M.Tons	36549	39504	92.5
VI Chemical & Petroleum Products	139					
1 Pharmaceuticals	36	1.15				97.8
i) Tablets	28	0.38	000 Nos.	294961	305361	96.6
ii) Liquids (Syrups & Drops)	27	0.48	000 Ltrs.	1826	1828	99.9
iii) Capsules	19	0.08	000 Nos.	65209	60714	107.4
iv) Injections	12	0.14	000 Nos.	11619	12559	92.5
v) Ointments	7	0.03	Kgs.	52076	46030	113.1
vi) Galenicals	6	0.04	000 Ltrs.	5	7	71.4
2 Basic Inorganic Chemicals/Acids	8	1.34		72682	73646	98.7
i) Caustic Soda	2		M.Tons	20486	20234	101.2
ii) Hydrochloric Acid	2		M.Tons	22509	22315	100.9
iii) Chlorine Liquids	2		M.Tons	1404	1584	88.6
iv) Soda Ash	2		M.Tons	27133	28353	95.7
v) Sulphuric Acid	5		M.Tons	1150	1160	99.1

Group/Items	No. of Units Covered in Oct: 2025	Weight with 2005-06 base	Unit of Quantity	Production		Index of Production in Oct: 2025 with Sep: 2025
				Oct: 2025	Sep: 2025	
3 Fertilizers	7	7.18	M.Tons	474318	491826	96.4
i) Urea	4		M.Tons	324781	340477	95.4
ii) Amm. Nitrate	1		M.Tons	74704	77609	96.3
iii) Amm. Sulphate	0		M.Tons	0	0	
iv) Super Phosphate	1		M.Tons	0	0	
v) Nitro Phosphate	1		M.Tons	74833	73740	101.5
4 Paints & Varnishes	12	0.65		10556	10061	104.9
i) Paints		0.01	M.Tons	8018	7246	110.7
			`000` Litres	2508	2785	90.1
ii) Varnishes		1.04	M.Tons	16	16	100.0
		0.26	`000` Litres	14	14	100.0
5 Tyres & Tubes	6	0.12	`000` Nos.	3634	3614	100.6
i) Cycle Tyres				426	422	100.9
ii) Automobile Tyres				520	515	101.0
iii) Cycle Tubes				635	630	100.8
iv) Automobile Tubes				2053	2047	100.3
6 Soap	62	0.07	M.Tons	22773	21947	103.8
i) Toilet Soap	7			3834	3837	99.9
ii) Washing Soap	62			18939	18110	104.6
7 Matches	2	0.00	M. Box * 40 Sticks	753	765	98.4
8 Synthetic Fibre	4	0.95	M.Tons	43700	43652	100.1
9 Petroleum Products	2	0.99	`000` Litres	543078	543835	99.9
i) Petrol (LPG)			`000` Litres	18937	16113	117.5
ii) J.P.			`000` Litres	39751	39701	100.1
iii) White Kerosene			`000` Litres	5369	5187	103.5
iv) H.S. Diesel			`000` Litres	193596	185193	104.5
v) Diesel Fuel			`000` Litres	208	631	33.0
vi) Furnace Fuel			`000` Litres	82438	81434	101.2
vii) Solvent Oil			`000` Litres	0	0	
viii) Lubricating Oil			`000` Litres	0	0	
ix) Bitumen 80/100			`000` Litres	15131	16708	90.6
x) Blown Bitumen Products			`000` Litres	0	0	
xi) Premium M.G.			`000` Litres	187648	198868	94.4
xii) Naphtha			`000` Litres	0	0	
VII Non-Metallic & Mineral	20					
1 Glass Sheets	9	0.19	M.Tons	24851	24745	100.4
2 Cement	11	3.91	M.Tons	2138044	1778465	120.2
VIII Engineering Products	449					
1 Steel Bars/ Angles	41	1.06	M.Tons	23388	23851	98.1
2 Fabricated Metal Products/HMC	1	0.53	M.Tons	17	14	121.4
3 Tractors	4	0.86	Nos.	1188	1209	98.3
4 Automobiles Cars/Trucks	1	1.65	Nos.	510	527	96.8
5 Diesel Engines	15	0.06	Nos.	126	125	100.8
6 Motor Cycles	17	0.13	Nos.	109728	105156	104.3
7 Bicycles	3	0.15	Nos.	14849	14819	100.2
8 Electric Fans	116	0.11	Nos.	207166	224360	92.3
i) Ceiling				144561	153558	94.1
ii) Pedestal				34790	38254	90.9
iii) Others				27815	32548	85.5
9 Electric Transformers	3	0.00	Nos.	1386	1433	96.7
10 Electric Motors	30	0.52	Nos.	1773	1751	101.3
11 Switch Gears	3	0.01	Nos.	565	541	104.4
12 Washing Machines	20	0.00	Nos.	38563	37943	101.6
13 Electric Meters	4	0.19	Nos.	130267	124365	104.7
14 Air-Conditioners	5	0.14	Nos.	5087	5495	92.6
15 Refrigerators/Deep Freezers	5	0.31	Nos.	43984	45149	97.4
16 Safety Razor Blades	1	0.14	Mill. Nos.	99	86	115.1
17 Agricultural Implements	151	0.38	Nos.	1067	1047	101.9
i) Chaff Cutter	54			671	667	100.6
ii) Sugarcane Machines	35			2	2	100.0
iii) Wheat Thrashers	30			58	56	103.6
iv) Others (Misc. Imp.)	43			336	322	104.3
18 Textiles Machinery	29	0.01		60	58	103.4
i) Power Looms	20		Nos.	57	55	103.6
ii) Bobbins	5		000 Nos.	0	0	
iii) Shuttles	6		000 Nos.	3	3	100.0
General Index	2029	72.14		161.2	159.0	101.4

Table 3: Production Volume of Selected Items Pertaining to Large-Scale Manufacturing Sector, October 2025 VS October 2024

Group/Items	No. of Units Covered in Oct: 2025	Weight with 2005-06 base	Unit of Quantity	Production		Index of Production in Oct: 2025 with Oct: 2024
				Oct: 2025	Oct: 2024	
I Food Drinks & Tobacco	910					
1 Vegetable Ghee/Cooking Oil	44	5.00	M.Tons	107001	102280	104.6
i) Vegetable Ghee	44		M.Tons	84442	82165	102.8
ii) Cooking Oil	18		M.Tons	22559	20115	112.2
2 Dairy Products	8	4.13				95.2
i) Process/UHT Milk		1.62	`000` Litres	41246	44702	92.3
ii) Milk Powder		0.87	M.Tons	775	1132	68.5
iii) Chees		0.01	M.Tons	701	800	87.6
iv) Butter/ Desi Ghee		0.33	M.Tons	338	301	112.3
v) Cream		1.04	M.Tons	815	580	140.5
vi) Yoghurt		0.26	M.Tons	0	0	
3 Wheat Milling	776	1.25	M.Tons	853104	853735	99.9
4 Sugar	44	3.77	M.Tons	0	0	
5 Tea (Blended)	3	0.03	M.Tons	7275	7379	98.6
6 Starch & its Products	2	0.56	M.Tons	36747	35591	103.2
i) Starch			M.Tons	22591	21033	107.4
ii) Glucose			M.Tons	14156	14558	97.2
7 Soft Drinks & Juices	30	0.82	`000` Litres	213250	191973	111.1
i) 7-up Coca Cola etc.	17		`000` Litres	190898	174292	109.5
ii) Fruit Juices	16		`000` Litres	20300	16523	122.9
iii) Syrups & Squashes	2		`000` Litres	2052	1158	177.2
8 Cigarettes	3	0.59	M. Nos	1542	1190	129.6
II Textiles	312					
1 Cotton Textiles	285					
i) Cotton/M. M Blended Yarn	247	15.40	M.Tons	107460	115510	93.0
ii) Cloth/M. M Blended Cloth	48	10.20	000 Mtrs.	43913	48111	91.3
2 Woolen Textiles	21	0.52	M.Tons	796	759	104.9
i) Woolen Yarn	14		M.Tons	766	742	103.2
ii) Knitting Wool			M.Tons	0	0	
iii) Woolen & Worsted Cloth	14		M.Tons	30	17	176.5
iv) Carpets	5	0.77	000 Mtrs.	0	0	
3 Jute Textiles	6	0.28	M.Tons	975	3622	26.9
i) Jute Sacking				347	2144	16.2
ii) Jute Hessian				488	1140	42.8
iii) Jute Twine				140	338	41.4
III Leather Rubber & Plastic Products	147					
1 Leather Tanning	106					
i) Upper Leather	95	0.49	000 Sq. Mtrs.	679	770	88.2
ii) Sole Leather	11		M.Tons	16	16	100.0
2 Footwear	41	0.90	000 Pairs	3135	3200	98.0
IV Ply Wood	6	0.44	000 Sq. Feet	580	588	98.6
V Paper & Paper Board	46	4.19	M.Tons	56147	55117	101.9
1 Paper				19598	19292	101.6
i) Writing			M.Tons	8960	9359	95.7
ii) Printing			M.Tons	5067	3927	129.0
iii) Packing & Others			M.Tons	5571	6006	92.8
2 Paper Board			M.Tons	36549	35825	102.0
VI Chemical & Petroleum Products	139					
1 Pharmaceuticals	36	1.15				104.1
i) Tablets	28	0.38	000 Nos.	294961	310114	95.1
ii) Liquids (Syrups & Drops)	27	0.48	000 Ltrs.	1826	1744	104.7
iii) Capsules	19	0.08	000 Nos.	65209	56509	115.4
iv) Injections	12	0.14	000 Nos.	11619	15045	77.2
v) Ointments	7	0.03	Kgs.	52076	48251	107.9
vi) Galenicals	6	0.04	000 Ltrs.	5	2	250.0
2 Basic Inorganic Chemicals/Acids	8	1.34		72682	105090	69.2
i) Caustic Soda	2		M.Tons	20486	30722	66.7
ii) Hydrochloric Acid	2		M.Tons	22509	40884	55.1
iii) Chlorine Liquids	2		M.Tons	1404	1387	101.2
iv) Soda Ash	2		M.Tons	27133	30875	87.9
v) Sulphuric Acid	5		M.Tons	1150	1222	94.1

Group/Items	No. of Units Covered in Oct: 2025	Weight with 2005-06 base	Unit of Quantity	Production		Index of Production in Oct: 2025 with Oct: 2024
				Oct: 2025	Oct: 2024	
3 Fertilizers	7	7.18	M.Tons	474318	447988	105.9
i) Urea	4		M.Tons	324781	303257	107.1
ii) Amm. Nitrate	1		M.Tons	74704	74787	99.9
iii) Amm. Sulphate	0		M.Tons	0	0	
iv) Super Phosphate	1		M.Tons	0	0	
v) Nitro Phosphate	1		M.Tons	74833	69944	107.0
4 Paints & Varnishes	12	0.65		10556	9966	105.9
i) Paints		0.01	M.Tons	8018	7145	112.2
			`000` Litres	2508	2791	89.9
ii) Varnishes		1.04	M.Tons	16	16	100.0
		0.26	`000` Litres	14	14	100.0
5 Tyres & Tubes	6	0.12	`000` Nos.	3634	3487	104.2
i) Cycle Tyres				426	384	110.9
ii) Automobile Tyres				520	492	105.7
iii) Cycle Tubes				635	593	107.1
iv) Automobile Tubes				2053	2018	101.7
6 Soap	62	0.07	M.Tons	22773	21784	104.5
i) Toilet Soap	7			3834	3943	97.2
ii) Washing Soap	62			18939	17841	106.2
7 Matches	2	0.00	M. Box * 40 Sticks	753	645	116.7
8 Synthetic Fibre	4	0.95	M.Tons	43700	43771	99.8
9 Petroleum Products	2	0.99	`000` Litres	543078	499259	108.8
i) Petrol (LPG)			`000` Litres	18937	14420	131.3
ii) J.P.			`000` Litres	39751	46742	85.0
iii) White Kerosene			`000` Litres	5369	3011	178.3
iv) H.S. Diesel			`000` Litres	193596	194000	99.8
v) Diesel Fuel			`000` Litres	208	645	32.2
vi) Furnace Fuel			`000` Litres	82438	79275	104.0
vii) Solvent Oil			`000` Litres	0	0	
viii) Lubricating Oil			`000` Litres	0	0	
ix) Bitumen 80/100			`000` Litres	15131	9901	152.8
x) Blown Bitumen Products			`000` Litres	0	0	
xi) Premium M.G.			`000` Litres	187648	151265	124.1
xii) Naphtha			`000` Litres	0	0	
VII Non-Metalic & Mineral	20					
1 Glass Sheets	9	0.19	M.Tons	24851	24835	100.1
2 Cement	11	3.91	M.Tons	2138044	1873163	114.1
VIII Engineering Products	449					
1 Steel Bars/ Angles	41	1.06	M.Tons	23388	23716	98.6
2 Fabricated Metal Products/HMC	1	0.53	M.Tons	17	18	94.4
3 Tractors	4	0.86	Nos.	1188	1351	87.9
4 Automobiles Cars/Trucks	1	1.65	Nos.	510	597	85.4
5 Diesel Engines	15	0.06	Nos.	126	121	104.1
6 Motor Cycles	17	0.13	Nos.	109728	92616	118.5
7 Bicycles	3	0.15	Nos.	14849	13945	106.5
8 Electric Fans	116	0.11	Nos.	207166	177099	117.0
i) Ceiling				144561	114478	126.3
ii) Pedestal				34790	16464	211.3
iii) Others				27815	46157	60.3
9 Electric Transformers	3	0.00	Nos.	1386	1403	98.8
10 Electric Motors	30	0.52	Nos.	1773	1252	141.6
11 Switch Gears	3	0.01	Nos.	565	620	91.1
12 Washing Machines	20	0.00	Nos.	38563	33717	114.4
13 Electric Meters	4	0.19	Nos.	130267	131314	99.2
14 Air-Conditioners	5	0.14	Nos.	5087	4832	105.3
15 Refrigerators/Deep Freezers	5	0.31	Nos.	43984	34614	127.1
16 Safety Razor Blades	1	0.14	Mill. Nos.	99	86	115.1
17 Agricultural Implements	151	0.38	Nos.	1067	1077	99.1
i) Chaff Cutter	54			671	672	99.9
ii) Sugarcane Machines	35			2	3	66.7
iii) Wheat Thrashers	30			58	61	95.1
iv) Others (Misc. Imp.)	43			336	341	98.5
18 Textiles Machinery	29	0.01		60	61	98.4
i) Power Looms	20		Nos.	57	58	98.3
ii) Bobbins	5		000 Nos.	0	0	
iii) Shuttles	6		000 Nos.	3	3	100.0
General Index	2029	72.14		161.2	158.5	101.7

Table 4: Production Volume of Selected Items Pertaining to Large-Scale Manufacturing Sector, 2025-26 (Jul-Oct) VS 2024-25 (Jul-Oct)

Group/Items	No. of Units Covered in Oct: 2025	Weight with 2005-06 base	Unit of Quantity	Production		Index of Production in 2025-26 (Jul-Oct) with 2024-25 (Jul-Oct)=100
				2025-26 (Jul-Oct)	2024-25 (Jul-Oct)	
I Food Drinks & Tobacco	910					
1 Vegetable Ghee/Cooking Oil	44	5.00	M.Tons	424849	417027	101.9
i) Vegetable Ghee	44		M.Tons	335250	332086	101.0
ii) Cooking Oil	18		M.Tons	89599	84941	105.5
2 Dairy Products	8	4.13				97.1
i) Process/UHT Milk		1.62	`000` Litres	167594	168418	99.5
ii) Milk Powder		0.87	M.Tons	3601	4151	86.8
iii) Chees		0.01	M.Tons	3329	3079	108.1
iv) Butter/ Desi Ghee		0.33	M.Tons	1012	1082	93.5
v) Cream		1.04	M.Tons	3025	2375	127.4
vi) Yoghurt		0.26	M.Tons	0	0	
3 Wheat Milling	776	1.25	M.Tons	3566501	3361047	106.1
4 Sugar	44	3.77	M.Tons	0	0	
5 Tea (Blended)	3	0.03	M.Tons	29618	29824	99.3
6 Starch & its Products	2	0.56	M.Tons	147188	145329	101.3
i) Starch			M.Tons	90734	88420	102.6
ii) Glucose			M.Tons	56454	56909	99.2
7 Soft Drinks & Juices	30	0.82	`000` Litres	922548	899565	102.6
i) 7-up Coca Cola etc.	17		`000` Litres	830660	814784	101.9
ii) Fruit Juices	16		`000` Litres	83742	76974	108.8
iii) Syrups & Squashes	2		`000` Litres	8146	7807	104.3
8 Cigarettes	3	0.59	M. Nos	6136	4494	136.5
II Textiles	312					
1 Cotton Textiles	285					
i) Cotton/M. M Blended Yarn	247	15.40	M.Tons	431766	466563	92.5
ii) Cloth/M. M Blended Cloth	48	10.20	000 Mtrs.	177216	193306	91.7
2 Woolen Textiles	21	0.52	M.Tons	3102	3019	102.7
i) Woolen Yarn	14		M.Tons	2996	2949	101.6
ii) Knitting Wool			M.Tons	0	0	
iii) Woolen & Worsted Cloth	14		M.Tons	106	70	151.4
iv) Carpets	5	0.77	000 Mtrs.	0	0	
3 Jute Textiles	6	0.28	M.Tons	8798	15198	57.9
i) Jute Sacking				5674	9230	61.5
ii) Jute Hessian				2337	4590	50.9
iii) Jute Twine				787	1378	57.1
III Leather Rubber & Plastic Products	147					
1 Leather Tanning	106					
i) Upper Leather	95	0.49	000 Sq. Mtrs.	2797	3049	91.7
ii) Sole Leather	11		M.Tons	64	64	100.0
2 Footwear	41	0.90	000 Pairs	12520	12440	100.6
IV Ply Wood	6	0.44	000 Sq. Feet	2288	2325	98.4
V Paper & Paper Board	46	4.19	M.Tons	241637	226244	106.8
1 Paper				76572	82482	92.8
i) Writing			M.Tons	40569	36367	111.6
ii) Printing			M.Tons	13606	21549	63.1
iii) Packing & Others			M.Tons	22397	24566	91.2
2 Paper Board			M.Tons	165065	143762	114.8
VI Chemical & Petroleum Products	139					
1 Pharmaceuticals	36	1.15				108.1
i) Tablets	28	0.38	000 Nos.	1207176	1226863	98.4
ii) Liquids (Syrups & Drops)	27	0.48	000 Ltrs.	7267	6955	104.5
iii) Capsules	19	0.08	000 Nos.	248136	218823	113.4
iv) Injections	12	0.14	000 Nos.	49928	57706	86.5
v) Ointments	7	0.03	Kgs.	202224	193008	104.8
vi) Galenicals	6	0.04	000 Ltrs.	25	8	312.5
2 Basic Inorganic Chemicals/Acids	8	1.34		287932	420506	68.5
i) Caustic Soda	2		M.Tons	77124	117779	65.5
ii) Hydrochloric Acid	2		M.Tons	87797	153439	57.2
iii) Chlorine Liquids	2		M.Tons	5487	5538	99.1
iv) Soda Ash	2		M.Tons	112861	138382	81.6
v) Sulphuric Acid	5		M.Tons	4663	5368	86.9

Group/Items	No. of Units Covered in Oct: 2025	Weight with 2005-06 base	Unit of Quantity	Production		Index of Production in 2025-26 (Jul-Oct) with 2024-25 (Jul-Oct)=100
				2025-26 (Jul-Oct)	2024-25 (Jul-Oct)	
3 Fertilizers	7	7.18	M.Tons	1934340	1749379	110.6
i) Urea	4		M.Tons	1328911	1182909	112.3
ii) Amm. Nitrate	1		M.Tons	306345	293667	104.3
iii) Amm. Sulphate	0		M.Tons	0	0	
iv) Super Phosphate	1		M.Tons	0	0	
v) Nitro Phosphate	1		M.Tons	299084	272803	109.6
4 Paints & Varnishes	12	0.65		40740	39028	104.4
i) Paints		0.01	M.Tons	29758	27908	106.6
			`000` Litres	10862	11000	98.7
ii) Varnishes		1.04	M.Tons	64	64	100.0
		0.26	`000` Litres	56	56	100.0
5 Tyres & Tubes	6	0.12	`000` Nos.	14413	13900	103.7
i) Cycle Tyres				1680	1525	110.2
ii) Automobile Tyres				2045	1967	104.0
iii) Cycle Tubes				2508	2353	106.6
iv) Automobile Tubes				8180	8055	101.6
6 Soap	62	0.07	M.Tons	88173	87724	100.5
i) Toilet Soap	7			15312	15523	98.6
ii) Washing Soap	62			72861	72201	100.9
7 Matches	2	0.00	M. Box * 40 Sticks	3042	2525	120.5
8 Synthetic Fibre	4	0.95	M.Tons	174343	174975	99.6
9 Petroleum Products	2	0.99	`000` Litres	2191217	2031399	107.9
i) Petrol (LPG)			`000` Litres	66921	57341	116.7
ii) J.P.			`000` Litres	162423	187749	86.5
iii) White Kerosene			`000` Litres	19341	12528	154.4
iv) H.S. Diesel			`000` Litres	759056	782135	97.0
v) Diesel Fuel			`000` Litres	1554	2796	55.6
vi) Furnace Fuel			`000` Litres	331994	337904	98.3
vii) Solvent Oil			`000` Litres	0	0	
viii) Lubricating Oil			`000` Litres	0	0	
ix) Bitumen 80/100			`000` Litres	67395	39472	170.7
x) Blown Bitumen Products			`000` Litres	0	0	
xi) Premium M.G.			`000` Litres	782533	611474	128.0
xii) Naphtha			`000` Litres	0	0	
VII Non-Metallic & Mineral	20					
1 Glass Sheets	9	0.19	M.Tons	99007	99071	99.9
2 Cement	11	3.91	M.Tons	7174293	6465276	111.0
VIII Engineering Products	449					
1 Steel Bars/ Angles	41	1.06	M.Tons	94516	94206	100.3
2 Fabricated Metal Products/HMC	1	0.53	M.Tons	62	66	93.9
3 Tractors	4	0.86	Nos.	4706	4899	96.1
4 Automobiles Cars/Trucks	1	1.65	Nos.	2125	2364	89.9
5 Diesel Engines	15	0.06	Nos.	510	493	103.4
6 Motor Cycles	17	0.13	Nos.	415690	381975	108.8
7 Bicycles	3	0.15	Nos.	59031	55478	106.4
8 Electric Fans	116	0.11	Nos.	915469	843438	108.5
i) Ceiling				621502	567206	109.6
ii) Pedestal				152543	77737	196.2
iii) Others				141424	198495	71.2
9 Electric Transformers	3	0.00	Nos.	5596	5435	103.0
10 Electric Motors	30	0.52	Nos.	7084	5412	130.9
11 Switch Gears	3	0.01	Nos.	1710	1943	88.0
12 Washing Machines	20	0.00	Nos.	150174	129761	115.7
13 Electric Meters	4	0.19	Nos.	494499	535243	92.4
14 Air-Conditioners	5	0.14	Nos.	25742	28891	89.1
15 Refrigerators/Deep Freezers	5	0.31	Nos.	182343	146099	124.8
16 Safety Razor Blades	1	0.14	Mill. Nos.	351	332	105.7
17 Agricultural Implements	151	0.38	Nos.	4239	4296	98.7
i) Chaff Cutter	54			2685	2680	100.2
ii) Sugarcane Machines	35			8	10	80.0
iii) Wheat Thrashers	30			231	233	99.1
iv) Others (Misc. Imp.)	43			1315	1373	95.8
18 Textiles Machinery	29	0.01		232	232	100.0
i) Power Looms	20		Nos.	218	219	99.5
ii) Bobbins	5		000 Nos.	0	0	
iii) Shuttles	6		000 Nos.	14	13	107.7
General Index*	2029	72.14		159.2	156.5	101.7

* Average Index over four months.

Table 5: Total Employment Regarding Large-Scale Industries, September-2025, October-2025 and October-2024

Groups/Items		No. of Units Covered in Oct: 2025	Sep: 2025	Oct: 2025	Oct: 2024	Index of Employment	
						Oct: 2025 with Sep: 2025	Oct: 2025 with Oct: 2024
I	Food Drinks & Tobacco	910					
1	Vegetable Ghee/Cooking Oil	44	5878	5890	5816	100.2	101.3
2	Dairy Products	8	2048	2047	2070	100.0	98.9
3	Wheat Milling	776	9761	9741	9734	99.8	100.1
4	Sugar	44	26371	26368	25670	100.0	102.7
5	Tea (Blended)	3	1557	1559	1646	100.1	94.7
6	Starch & its Products	2	1807	1807	1810	100.0	99.8
7	Soft Drinks & Juices	30	11458	11440	11474	99.8	99.7
8	Cigarettes	3	658	658	645	100.0	102.0
II	Textiles	313					
1	Cotton Textiles	285	140045	139897	141611	99.9	98.8
2	Woolen Textiles	21	942	944	932	100.2	101.3
3	Jute Textiles	7	2513	2172	4349	86.4	49.9
III	Leather Rubber & Plastic Products	147					
1	Leather Tanning	106	2278	2262	2342	99.3	96.6
2	Footwear	41	12776	12777	12821	100.0	99.7
IV	Plywood	6	80	80	82	100.0	97.6
V	Paper & Paper Board	46					
1	Paper & Paper Board	47	4661	4645	4961	99.7	93.6
VI	Chemicals & Petroleum Products	139					
1	Pharmaceuticals	36	8102	8104	8097	100.0	100.1
2	Basic Inorganic Chemicals	8	2260	2258	2269	99.9	99.5
3	Fertilizers	7	5541	5545	5525	100.1	100.4
4	Paints & Varnishes	12	2461	2666	2441	108.3	109.2
5	Tyres & Tubes	6	1486	1491	1410	100.3	105.7
6	Soap	62	3019	3022	3018	100.1	100.1
7	Matches	2	465	458	484	98.5	94.6
8	Synthetic Fibre	4	1782	1782	1782	100.0	100.0
9	Petroleum Products	2	998	998	991	100.0	100.7
VII	Non-Metallic & Mineral Products	20					
1	Glass Sheets	9	1071	1073	1081	100.2	99.3
2	Cement	11	7459	7464	7457	100.1	100.1
VIII	Engineering Products	448					
1	Steel Bars/ Angles	40	1110	1110	1109	100.0	100.1
2	Fabricated Metal Products/HMC	1	14	14	14	100.0	100.0
3	Tractors	4	434	434	441	100.0	98.4
4	Automobile Cars/Trucks	1	682	682	691	100.0	98.7
5	Diesel Engines	15	23	23	23	100.0	100.0
6	Motor Cycles	17	3255	3258	3249	100.1	100.3
7	Bicycles	3	686	686	686	100.0	100.0
8	Electric Fans	116	2260	2255	2205	99.8	102.3
9	Electric Transformers	3	2680	2680	2680	100.0	100.0
10	Electric Motors	30	170	171	161	100.6	106.2
11	Electric Meters	4	1200	1200	1200	100.0	100.0
12	Switch Gears	3	12	12	12	100.0	100.0
13	Washing Machines	20	291	293	278	100.7	105.4
15	Air-Conditioners/Refrigerators/Deep Fre	10	2153	2153	2153	100.0	100.0
16	Safety Razor Blades	1	680	685	693	100.7	98.8
17	Agricultural Implements	151	486	488	482	100.4	101.2
18	Textiles Machinery	29	70	70	71	100.0	98.6
Total		2029	273683	273362	276666	99.9	98.8

Table 6: Total Number of Production Workers Regarding Large-Scale Industries, September-2025, October-2025 and October-2024

Groups/Items		No. of Units Covered in Oct: 2025	Sep: 2025	Oct: 2025	Oct: 2024	Index of Employment	
						Oct: 2025 with Sep: 2025	Oct: 2025 with Oct: 2024
I	Food Drinks & Tobacco	910					
1	Vegetable Ghee/Cooking Oil	44	3730	3755	3711	100.7	101.2
2	Dairy Products	8	1290	1291	1310	100.1	98.5
3	Wheat Milling	776	6240	6022	6069	96.5	99.2
4	Sugar	44	17981	17886	18600	99.5	96.2
5	Tea (Blended)	3	1151	1155	1235	100.3	93.5
6	Starch & its Products	2	1636	1636	1612	100.0	101.5
7	Soft Drinks & Juices	30	7544	7526	7634	99.8	98.6
8	Cigarettes	3	425	425	405	100.0	104.9
II	Textiles	313					
1	Cotton Textiles	285	115245	115196	117810	100.0	97.8
2	Woolen Textiles	21	730	732	728	100.3	100.5
3	Jute Textiles	7	2212	1932	4031	87.3	47.9
III	Leather Rubber & Plastic Products	147					
1	Leather Tanning	106	1558	1549	1692	99.4	91.5
2	Footwear	41	9332	9333	9366	100.0	99.6
IV	Plywood	6	72	72	75	100.0	96.0
V	Paper & Paper Board	46					
1	Paper & Paper Board	47	3393	3382	3560	99.7	95.0
VI	Chemicals & Petroleum Products	139					
1	Pharmaceuticals	36	3312	3315	3314	100.1	100.0
2	Basic Inorganic Chemicals	8	1400	1398	1404	99.9	99.6
3	Fertilizers	7	3491	3495	3482	100.1	100.4
4	Paints & Varnishes	12	1556	1559	1532	100.2	101.8
5	Tyres & Tubes	6	1135	1138	1087	100.3	104.7
6	Soap	62	2388	2390	2389	100.1	100.0
7	Matches	2	453	448	437	98.9	102.5
8	Synthetic Fibre	4	1472	1472	1484	100.0	99.2
9	Petroleum Products	2	555	555	542	100.0	102.4
VII	Non-Metallic & Mineral Products	20					
1	Glass Sheets	9	781	784	802	100.4	97.8
2	Cement	11	4356	4357	4346	100.0	100.3
VIII	Engineering Products	448					
1	Steel Bars/ Angles	40	802	802	801	100.0	100.1
2	Fabricated Metal Products/HMC	1	11	11	11	100.0	100.0
3	Tractors	4	295	295	306	100.0	96.4
4	Automobile Cars/Trucks	1	461	461	470	100.0	98.1
5	Diesel Engines	15	16	16	16	100.0	100.0
6	Motor Cycles	17	2412	2415	2409	100.1	100.2
7	Bicycles	3	527	527	527	100.0	100.0
8	Electric Fans	116	1820	1810	1769	99.5	102.3
9	Electric Transformers	3	1980	1980	1980	100.0	100.0
10	Electric Motors	30	142	143	133	100.7	107.5
11	Electric Meters	4	955	955	955	100.0	100.0
12	Switch Gears	3	10	10	10	100.0	100.0
13	Washing Machines	20	212	214	199	100.9	107.5
15	Air-Conditioners/Refrigerators/Deep Fre	10	1845	1845	1845	100.0	100.0
16	Safety Razor Blades	1	540	545	549	100.9	99.3
17	Agricultural Implements	151	357	359	348	100.6	103.2
18	Textiles Machinery	29	60	60	61	100.0	98.4
Total		2029	205883	205251	211046	99.7	97.3

Table 7: Average Monthly Total Employment Regarding Large-Scale Industries, 2025-26 (Jul-Oct): VS 2024-25 (Jul-Oct):

Groups/Items		No. of Units Covered in Oct: 2025	2025-26 (Jul-Oct)	2024-25 (Jul-Oct)	2025-26 (Jul-Oct) with 2024-25 (Jul-Oct)
I	Food Drinks & Tobacco	910			
1	Vegetable Ghee/Cooking Oil	44	5853	5850	100.0
2	Dairy Products	8	2044	2061	99.1
3	Wheat Milling	776	9795	9704	100.9
4	Sugar	44	26761	26355	101.5
5	Tea (Blended)	3	1558	1603	97.2
6	Starch & its Products	2	1807	1811	99.8
7	Soft Drinks & Juices	30	11491	11534	99.6
8	Cigarettes	3	658	636	103.5
II	Textiles	313			
1	Cotton Textiles	285	140132	142027	98.7
2	Woolen Textiles	21	940	932	100.8
3	Jute Textiles	7	2711	4397	61.7
III	Leather Rubber & Plastic Products	147			
1	Leather Tanning	106	2284	2335	97.8
2	Footwear	41	12774	12808	99.7
IV	Plywood	6	80	81	98.8
V	Paper & Paper Board	46			
1	Paper & Paper Board	47	4654	4947	94.1
VI	Chemicals & Petroleum Products	139			
1	Pharmaceuticals	36	8102	8092	100.1
2	Basic Inorganic Chemicals	8	2258	2264	99.7
3	Fertilizers	7	5543	5522	100.4
4	Paints & Varnishes	12	2512	2436	103.1
5	Tyres & Tubes	6	1483	1401	105.9
6	Soap	62	3015	3019	99.9
7	Matches	2	467	483	96.8
8	Synthetic Fibre	4	1781	1780	100.1
9	Petroleum Products	2	998	990	100.8
VII	Non-Metallic & Mineral Products	20			
1	Glass Sheets	9	1070	1079	99.2
2	Cement	11	7445	7447	100.0
VIII	Engineering Products	448			
1	Steel Bars/ Angles	40	1110	1106	100.3
2	Fabricated Metal Products/HMC	1	14	14	100.0
3	Tractors	4	434	443	97.9
4	Automobile Cars/Trucks	1	683	691	98.8
5	Diesel Engines	15	23	23	100.0
6	Motor Cycles	17	3256	3247	100.3
7	Bicycles	3	686	686	100.0
8	Electric Fans	116	2263	2219	102.0
9	Electric Transformers	3	2680	2680	100.0
10	Electric Motors	30	170	163	104.6
11	Electric Meters	4	1200	1200	100.0
12	Switch Gears	3	12	12	100.0
13	Washing Machines	20	291	275	105.8
15	Air-Conditioners/Refrigerators/Deep Freezers	10	2153	2153	100.0
16	Safety Razor Blades	1	682	693	98.4
17	Agricultural Implements	151	487	484	100.5
18	Textiles Machinery	29	70	71	99.3
Total		2029	274424	277749	98.8

Table 8: Average Monthly Number of Production Workers Regarding Large-Scale Industries, 2025-26 (Jul-Oct): VS 2024-25 (Jul-Oct):

Groups/Items		No. of Units Covered in Oct: 2025	2025-26 (Jul-Oct)	2024-25 (Jul-Oct)	2025-26 (Jul-Oct) with 2024-25 (Jul-Oct)
I	Food Drinks & Tobacco	910			
1	Vegetable Ghee/Cooking Oil	44	3722	3713	100.2
2	Dairy Products	8	1286	1309	98.3
3	Wheat Milling	776	6183	6040	102.4
4	Sugar	44	18468	19030	97.0
5	Tea (Blended)	3	1152	1192	96.6
6	Starch & its Products	2	1636	1611	101.6
7	Soft Drinks & Juices	30	7562	7777	97.2
8	Cigarettes	3	425	402	105.9
II	Textiles	313			
1	Cotton Textiles	285	115311	118421	97.4
2	Woolen Textiles	21	729	727	100.3
3	Jute Textiles	7	2407	4053	59.4
III	Leather Rubber & Plastic Products	147			
1	Leather Tanning	106	1587	1686	94.1
2	Footwear	41	9330	9353	99.8
IV	Plywood	6	72	75	96.6
V	Paper & Paper Board	46			
1	Paper & Paper Board	47	3390	3547	95.6
VI	Chemicals & Petroleum Products	139			
1	Pharmaceuticals	36	3313	3311	100.0
2	Basic Inorganic Chemicals	8	1399	1402	99.8
3	Fertilizers	7	3493	3482	100.3
4	Paints & Varnishes	12	1554	1525	101.9
5	Tyres & Tubes	6	1134	1084	104.6
6	Soap	62	2385	2390	99.8
7	Matches	2	451	438	102.9
8	Synthetic Fibre	4	1472	1481	99.4
9	Petroleum Products	2	555	543	102.3
VII	Non-Metallic & Mineral Products	20			
1	Glass Sheets	9	781	801	97.5
2	Cement	11	4347	4304	101.0
VIII	Engineering Products	448			
1	Steel Bars/ Angles	40	802	798	100.4
2	Fabricated Metal Products/HMC	1	11	11	100.0
3	Tractors	4	295	308	96.0
4	Automobile Cars/Trucks	1	463	470	98.4
5	Diesel Engines	15	16	16	100.0
6	Motor Cycles	17	2413	2410	100.1
7	Bicycles	3	527	527	100.0
8	Electric Fans	116	1822	1780	102.4
9	Electric Transformers	3	1980	1980	100.0
10	Electric Motors	30	142	135	105.2
11	Electric Meters	4	955	955	100.0
12	Switch Gears	3	10	10	100.0
13	Washing Machines	20	211	195	108.2
15	Air-Conditioners/Refrigerators/Deep Freezers	10	1845	1845	100.0
16	Safety Razor Blades	1	542	549	98.7
17	Agricultural Implements	151	358	350	102.3
18	Textiles Machinery	29	60	61	99.2
Total		2029	206591	212091	97.4

PERFORMANCE OF COTTON TEXTILE INDUSTRY

Report for the month of October 2025

Coverage

This report covers Two Hundred & Eighty Five (285) Cotton Textiles Mills, Producing yarn and cloth.

Spindles/Rotors/Looms	Installed	Average Worked	% Utilization
Spindles	826271	525110	63.6%
Rotors	52285	35020	67.0%
Looms	7851	5710	72.7%

MANUFACTURING ACTIVITY (OCTOBER 2025)

Production, Consumption and Stock of Cotton Bales

Textile mills purchased 737447 Bales of Cotton during the month, which is 0.5% lower September 2025. These mills consumed 609567 of Cotton Bales to manufacture Yarn that is 2.1% lower than the last month. The stock of Cotton Bales at the end of the month was 5571658 Bales.

Production, Consumption and Sale of Cotton Yarn

The production of Cotton Yarn during the month was 72455 thousand kgs. Which was 0.2% lower than the last month. The mills consumed 8272 thousand kgs. Of Cotton Yarn to manufacture Cotton Cloth, during the month, 69700 thousand kgs. Of Cotton Yarn was sold by the textile mills which was 0.7% lower than the September 2025. The Export of Cotton Yarn during the month was 10739 thousand kgs. Which was 0.1% lower than the last month.

Production and Sale of Cotton Cloth

The production of Cotton Cloth during the month was 38311 thousand Metres. Which is 0.3% lower than the last month, 47646 thousand Metres. Of Cotton Cloth was sold 13682 thousand Metres was exported by the Textile Mills during the month which was 8.7% higher than last month.

Production of Man Made/Blended Yarn and Made/Blended Cloth

The production of Man Made/Blended Yarn was 35005 thousand kgs. which was 0.4% higher than the last month. The production of Man Made/Blended Cloth was 5602 thousand Mtrs. which was 0.8% lower the last month.

Employment and Wages/Salaries

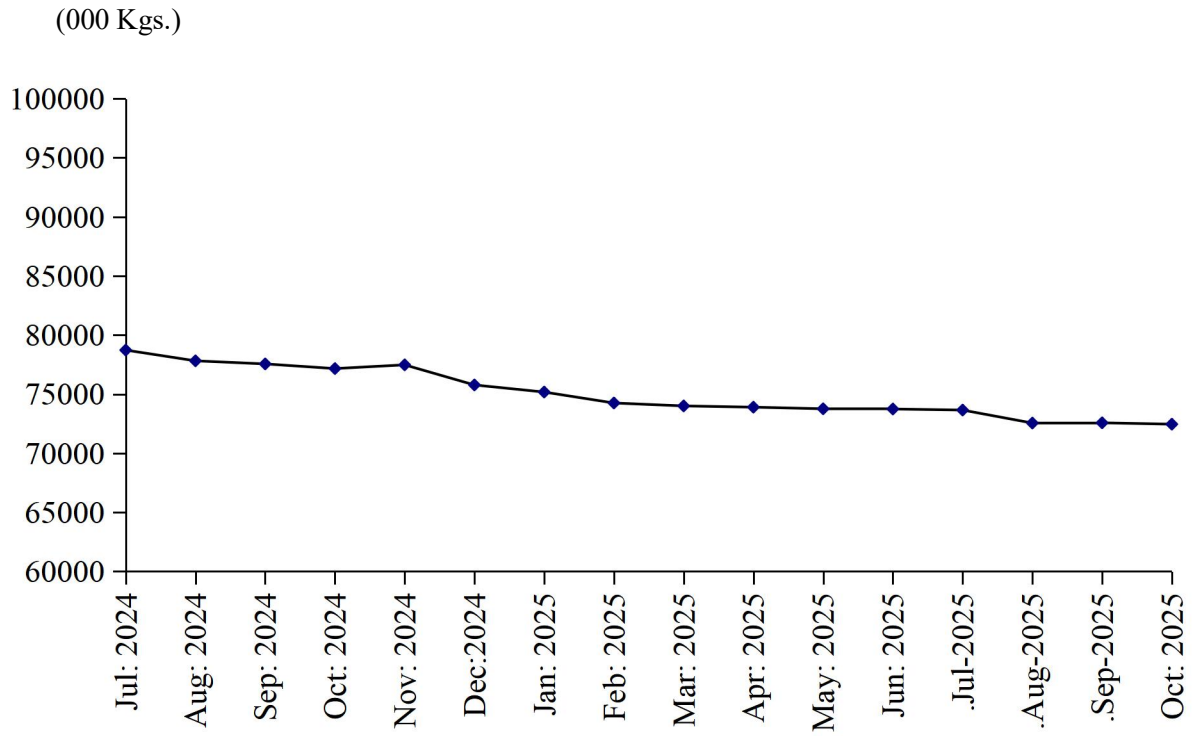
Total employment during the month was 139897 Out of this total employment, 115196 were production workers. Total wages/salaries for the month amounted to 3320.1 Million Rupees.

Production of Man Made/Blended Yarn and Cloth (Since July 2024)

Month/Year	Man Made / Blended Yarn (000 Kgs.)		Man Made / Blended Cloth (000.Mtrs.)	
	2024-25	2025-26	2024-25	2025-26
<u>Jul:- Oct:</u>	<u>155311</u>	<u>140539</u>	<u>25522</u>	<u>22572</u>
July	39567	35251	6383	5675
August	38648	35140	6261	5650
September	38746	35143	7027	5645
October	38350	35005	6855	5602
November	37943		6789	
December	37502		5900	
January	36497		5890	
February	35745		5950	
March	35610		5812	
April	35512		5800	
May	35456		5774	
June	35436		5742	

PRODUCTION OF COTTON YARN

July 2024 to October 2025



PRODUCTION OF COTTON CLOTH

July 2024 to October 2025

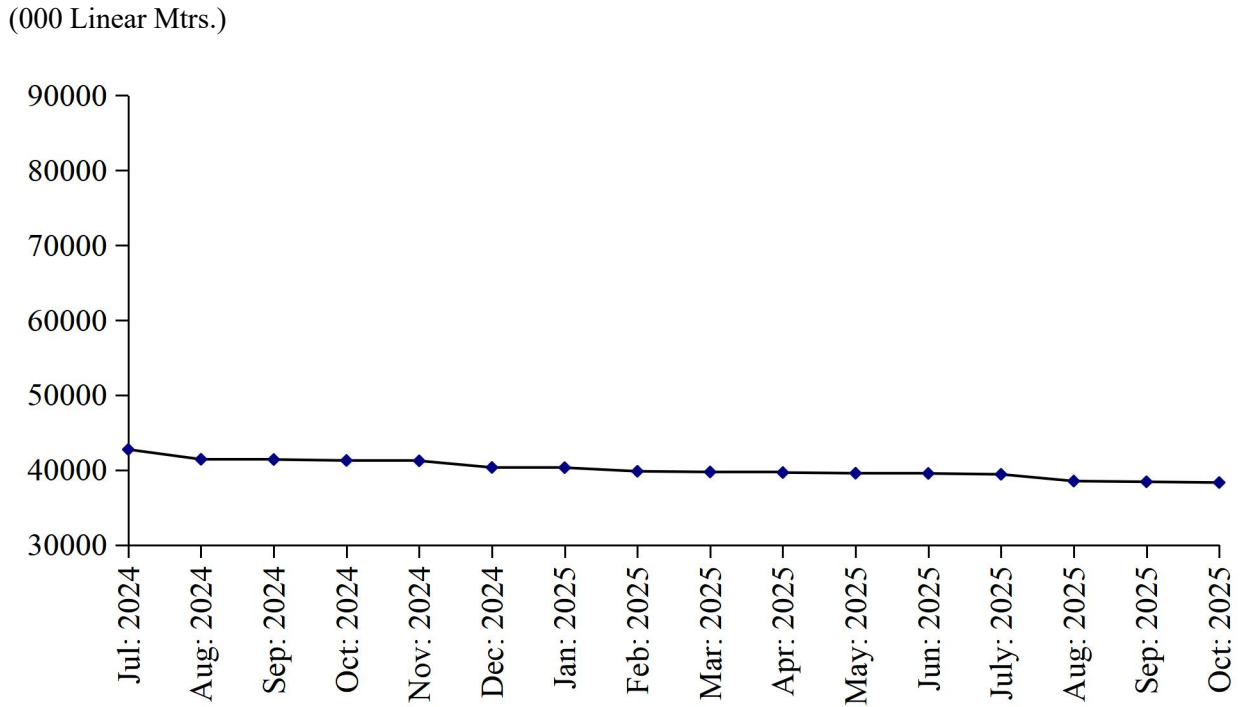


TABLE 10: DETAIL OF THE PURCHASE, SALE, CONSUMPTION AND STOCK OF COTTON BALES.

(one Bale = 170 Kg)

Year (July-June)/ Month	No. Of Reporting Mills	Purchase	Sale	Consumed for Spinning	Stock at the end of Year/Month
2008-09	268	7284896	483579	7100353	1679079
2009-10	268	8143340	505951	7889680	1426788
2010-11	274	8801855	484794	8596317	1147532
2011-12	274	8025974	387146	7286551	1499809
2012-13	277	8618084	326690	7863746	1927457
2013-14	277	8301002	434565	7838753	1955141
2014-15	277	8281619	550118	7819131	1867511
2015-16	290	7263140	330272	7085902	1714477
2016-17	290	8271104	587127	7802375	1596079
2017-18	299	8157127	412752	7459759	1880695
2018-19	299	8156763	448409	7552656	2036393
2019-20	299	6953009	399666	6319497	2270239
2020-21	285	8478928	314792	7320669	3113706
2021-22	285	11846884	1594595	9431481	3934514
2022-23	285	11142140	247639	10794841	4034174
2023-24	285	10508376	98183	9531211	4913156
2024-25	285	8767443	233020	8079217	5368362
(Jul: - Oct:)	<u>285</u>	<u>3008122</u>	<u>115074</u>	<u>2693792</u>	<u>5112412</u>
Jul:	285	624151	18533	683820	4834954
Aug:	285	841212	56468	645999	4973699
Sep:	285	820817	20577	671896	5102043
Oct:	285	721942	19496	692077	5112412
Nov:	285	754543	14494	692863	5129598
Dec:	285	712145	14204	683461	5144078
Jan:	285	724543	12907	686124	5169590
Feb:	285	717541	12409	688530	5186192
Mar:	285	724543	11107	686395	5213233
Apr:	285	727776	11715	660909	5268385
May	285	728736	21715	660116	5315290
June	285	699494	19395	627027	5368362
<u>2025-26</u>					
(Jul: – Oct:)	<u>285</u>	<u>2926629</u>	<u>260447</u>	<u>2462886</u>	<u>5571658</u>
Jul:	285	701288	219570	613380	5236700
Aug:	285	746447	13969	617372	5351806
Sep:	285	741447	13479	622567	5457207
Oct:	285	737447	13429	609567	5571658

TABLE 11: PRODUCTION, PURCHASE, CONSUMPTION, SALE AND STOCK OF COTTON YARN

Year (July-June)/ Month	No. of Reporting Mills	Production	Purchase	Consumed	SALE			Stock at the end of Year/ Month
					Total	Within Country	Exported	
2008-09	263	744478	138920	150092	736453	562275	174178	46822
2009-10	263	824100	93550	108458	809044	646616	162428	46970
2010-11	263	861278	86884	107441	843590	672067	171523	44101
2011-12	263	807305	83157	76949	824281	661528	162753	33333
2012-13	274	892200	116081	106323	898240	651670	246570	37051
2013-14	274	939965	129796	132378	931890	720629	211561	42544
2014-15	289	982172	132904	139454	974797	750512	224285	43369
2015-16	292	987258	139201	162386	962945	753246	209699	44497
2016-17	290	1063645	143722	153715	1056034	857310	198724	42115
2017-18	247	1082179	191064	179554	1090682	857987	232695	45122
2018-19	247	1075008	186447	178128	1082390	888248	194132	46059
2019-20	247	976627	221511	180109	997528	812952	184576	66560
2020-21	247	998181	342664	169862	1182999	991173	191826	54544
2021-22	247	1006783	252995	215857	1033312	843488	189824	65153
2022-23	247	996268	204535	194104	966807	819302	147505	105045
2023-24	247	972018	197405	143963	977666	839259	138407	152839
2024-25	247	909312	176439	115931	922098	276068	146030	200561
(Jul: - Oct:)	247	311252	59942	47071	333634	275002	58632	143328
Jul:	247	78723	14475	11303	89899	71986	17913	144835
Aug:	247	77815	15287	14884	88624	71195	17429	134429
Sep:	247	77554	15640	10942	78344	66627	11717	138337
Oct:	247	77160	14540	9942	76767	65194	11573	143328
Nov:	247	77474	13640	8942	75425	65152	10273	150075
Dec:	247	75774	13341	8743	75774	63452	12322	154673
Jan:	247	75174	14032	8742	74949	62821	12128	160188
Feb:	247	74247	13640	8729	74491	63695	10796	164855
Mar:	247	74000	13440	8542	70872	61175	9697	172881
Apr:	247	73894	14630	8447	71381	61187	10194	181577
May	247	73758	14430	8442	72829	61903	10926	188494
Jun:	247	73739	19344	8273	72743	61681	11062	200561
2025-26								
(Jul:- Oct:)	247	291227	62789	35960	291768	245115	46653	226549
Jul:	247	73650	16741	9344	78446	65561	12885	203162
Aug:	247	72551	15666	9772	73402	61124	12278	208205
Sep:	247	72571	15366	8572	70220	59469	10751	217350
Oct:	247	72455	15016	8272	69700	58961	10739	226549

TABLE 12: PRODUCTION, PURCHASE, SALE AND STOCK OF COTTON CLOTH.

(000 Mtrs.)

Year (July-June)/ Month	No. Of Reporting Mills	Production	Purchased	SALE			Stock at the end of Year/ Month
				Total	Within Country	Exported	
2008-09	52	350406	52966	397698	207800	189898	75588
2009-10	52	369035	62330	438802	258870	179932	68151
2010-11	53	377058	27814	411759	273413	138346	61264
2011-12	53	324906	26410	354262	245679	108583	58318
2012-13	56	337955	39613	384441	227950	156491	51445
2013-14	56	414827	44459	454427	230989	223438	56304
2014-15	57	468206	33332	500905	297034	203871	56937
2015-16	57	522412	18246	542268	325894	216374	55327
2016-17	58	670884	42791	703647	431374	272273	65355
2017-18	39	703513	44908	749157	439486	309671	64619
2018-19	39	697096	38577	751178	456319	294859	49114
2019-20	39	650317	30785	658561	455655	202906	75042
2020-21	38	644439	48331	702494	513618	188876	65318
2021-22	38	690956	48439	728202	512555	215647	76511
2022-23	38	653813	166284	804749	633760	170989	91859
2023-24	38	587324	197410	769650	600104	169546	106943
2024-25	38	486884	145666	648263	410308	137955	191230
(Jul: – Oct:)	<u>38</u>	<u>166780</u>	<u>55103</u>	<u>205224</u>	<u>153433</u>	<u>51791</u>	<u>123602</u>
Jul:	38	42724	13228	57454	41853	15601	105441
Aug:	38	41415	17353	53079	40048	13031	111130
Sep:	38	41385	13261	50410	38282	12128	115366
Oct:	38	41256	11261	44281	33250	11031	123602
Nov:	38	41214	11059	44214	32509	11705	131661
Dec:	38	40324	10949	43242	32411	10831	139692
Jan:	38	40300	11059	43342	32509	10833	147709
Feb:	38	39815	10959	43810	33010	10800	154673
Mar:	38	39725	11059	42640	31920	10720	162817
Apr:	38	39645	11876	42429	31888	10541	171909
May:	38	39555	11726	42227	31775	10452	180963
Jun:	38	39526	11876	41135	30853	10282	191230
<u>2025-26</u>							
(Jul: – Oct:)	<u>38</u>	<u>154644</u>	<u>73744</u>	<u>193212</u>	<u>139668</u>	<u>53544</u>	<u>226406</u>
Jul:	38	39410	18147	51088	36910	14178	197699
Aug:	38	38510	18736	47589	34497	13092	207356
Sep:	38	38413	18436	46889	34297	12592	217316
Oct:	38	38311	18425	47646	33964	13682	226406

TABLE 13: EMPLOYMENT AND WAGES/SALARIES

Year (July-June)/ Month	No. Of Reporting Mills	E M P L O Y M E N T (Nos.)*			WAGES/SALARIES (000 Rs.)		
		Total	Production Workers	Office Staff	Total	Production Workers	Office Staff
2008-09	288	162984	139152	23832	802438	629608	172830
2009-10	288	168727	144487	24240	944137	750701	193436
2010-11	295	166718	142756	23962	1149580	893633	255947
2011-12	295	163535	140315	23220	1171743	926744	245002
2012-13	280	169697	144411	25286	1323153	1043134	280586
2013-14	281	172129	144216	27913	1627528	1286234	341294
2014-15	289	170528	143048	27480	1734882	1372957	361925
2015-16	289	164049	135777	28272	1925533	1497525	423209
2016-17	298	165251	133259	31992	2069106	1599857	469249
2017-18	299	161727	133190	28537	2251084	1756455	494629
2018-19	299	157846	131085	26761	2438412	1891246	247166
2019-20	299	151851	126203	25648	2499773	1973563	526210
2020-21	285	154706	129886	24820	2816361	2213454	602907
2021-22	285	157343	132207	25136	3146792	2425150	721642
2022-23	285	150922	126438	24484	3307707	2550426	757281
2023-24	285	144754	121749	23005	3334736	2596046	738690
2024-25	285	141326	117307	24019	3328171	2594562	733609
(Jul: - Oct:)	<u>285</u>	<u>142027</u>	<u>118421</u>	<u>23606</u>	<u>3331355</u>	<u>2599074</u>	<u>732281</u>
Jul:	285	142970	120031	22939	3331120	2599045	732075
Aug:	285	141766	117942	23629	3331120	2599120	732000
Sep:	285	141760	117900	23860	3332181	2600031	732150
Oct:	285	141611	117810	23801	3331000	2598100	732900
Nov:	285	141575	117413	24162	3331001	2598000	733001
Dec:	285	141341	117241	24100	3330010	2597009	733001
Jan:	285	141022	117115	23907	3327651	2599175	728476
Feb:	285	140945	116789	24156	3326405	2599010	727395
Mar:	285	140865	116699	24166	3326201	2587124	739077
Apr:	285	140775	116587	24188	3325321	2586214	739107
May:	285	140645	116484	24161	3323531	2586412	737119
Jun:	285	140636	115678	24958	3322510	2585509	737001
<u>2025-26</u>							
(Jul: -Oct:)	<u>285</u>	<u>140132</u>	<u>115311</u>	<u>24821</u>	<u>3321909</u>	<u>2582050</u>	<u>739859</u>
Jul:	285	140351	115456	24895	3324312	2588142	739202
Aug:	285	140235	115345	24890	3322210	2578314	743896
Sep:	285	140045	115245	24800	3321012	2581141	739871
Oct:	285	139897	115196	24701	3320100	2580602	739498

* = Monthly averages over the four months.

ANNEXURE-II

PERFORMANCE OF WOOLLEN TEXTILE INDUSTRY

Report for the month of October 2025

Coverage

The report covers the following Twenty one (21) Woollen Textile Mills of Punjab Province. Their installed and working capacities during the month are as under:-

Production

The Woollen Textile Mills produced 766 thousand Kgs. of Woollen Yarn, and Nil production of Knitting Wool during the month October 2025. The production of Woollen Yarn which was 2.3% higher than the last month.

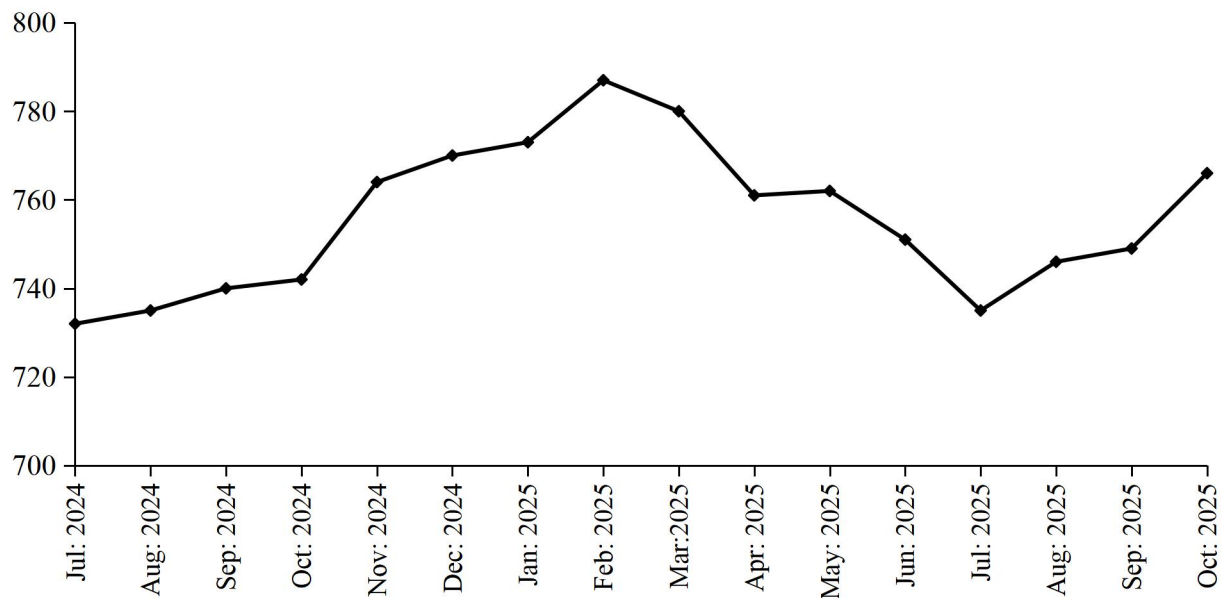
Employment

Total employment in the mills under report was 944 which was 0.2% higher than the last month. Out of this total employment 732 were production worker.

PRODUCTION OF WOOLLEN YARN

July 2024 to October 2025

(000 Kg.)



PRODUCTION OF WOOLEN WORSTED CLOTH

July 2024 to October 2025

(000 Kg.)

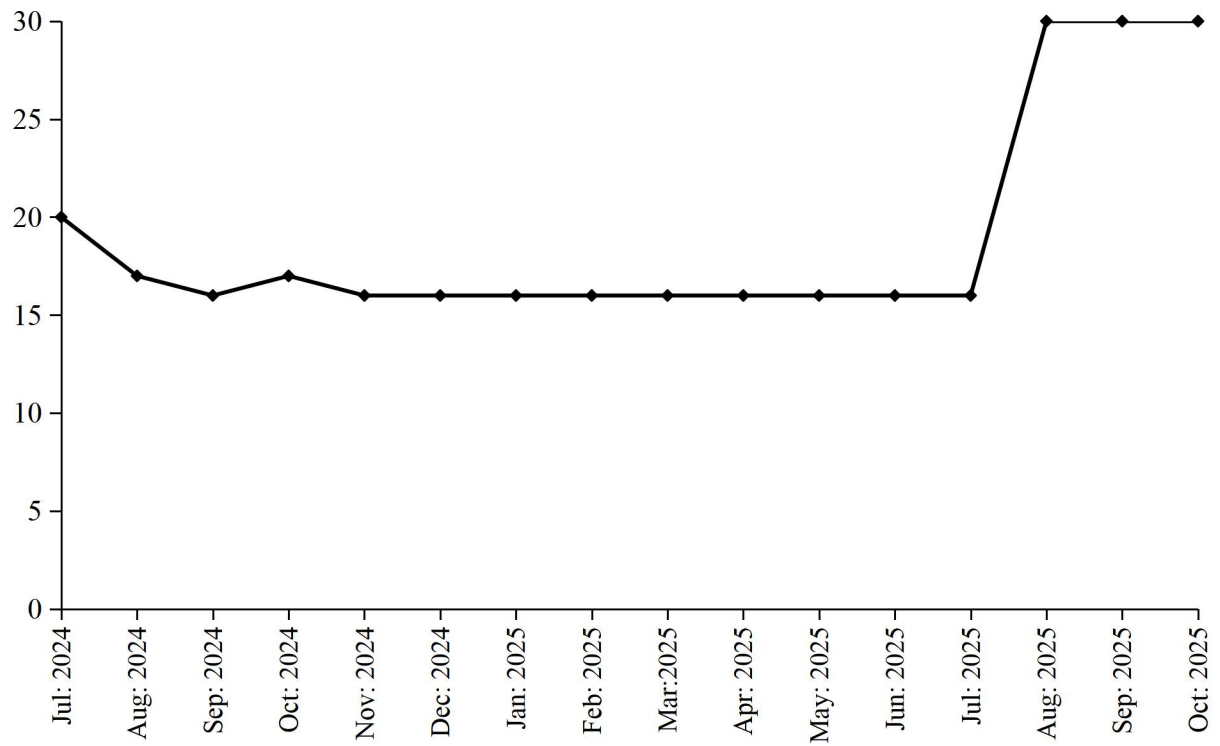


TABLE 13: MANUFACTURING ACTIVITY OF WOOLLEN INDUSTRY.

Year (July-June)/ month	No. Of Reporting Units	PRODUCTION				EMPLOYMENT (Nos.) *	
		Woollen Yarn (M.Tons)	Knitting Wool (M.Tons)	Woollen Worsted Cloth (000 Mtrs.)	Blankets (Nos.)	Total	Production Workers
2008-09	27	1046	2778	991	-	1787	1476
2009-10	27	1154	2565	825	-	1797	1491
2010-11	27	1037	2351	844	-	1729	1478
2011-12	27	826	2097	808	-	1680	1405
2012-13	27	740	2250	592	-	1661	1413
2013-14	27	864	1633	221	-	1410	1153
2014-15	27	1510	1805	243	-	1301	1037
2015-16	27	1334	1963	246	-	1252	998
2016-17	27	1738	1898	226	-	1318	1056
2017-18	26	2159	1673	160	-	1397	1116
2018-19	26	1918	1488	11	-	1372	1096
2019-20	25	2731	883	79	-	1318	1055
2020-21	21	7988	428	172	-	1303	1017
2021-22	21	7068	27	223	-	1096	832
2022-23	21	7484	-	214	-	918	721
2023-24	21	7986	-	255	-	915	715
2024-25	21	9097	-	198	-	936	730
(Jul: – Oct:)	<u>21</u>	<u>2949</u>	=	<u>70</u>	=	<u>932</u>	<u>727</u>
Jul:	21	732	-	20	-	933	728
Aug:	21	735	-	17	-	933	726
Sep:	21	740	-	16	-	930	725
Oct:	21	742	-	17	-	932	728
Nov:	21	764	-	16	-	935	730
Dec:	21	770	-	16	-	938	733
Jan:	21	773	-	16	-	938	733
Feb:	21	787	-	16	-	938	733
Mar:	21	780	-	16	-	938	733
Apr:	21	761	-	16	-	938	733
May	21	762	-	16	-	938	733
Jun:	21	751	-	16	-	938	733
<u>2025 -26</u>							
(Jul: – Oct:)	<u>21</u>	<u>2996</u>	=	<u>106</u>	=	<u>940</u>	<u>729</u>
Jul:	21	735	-	16	-	931	725
Aug:	21	746	-	30	-	942	730
Sep:	21	749	-	30	-	942	730
Oct:	21	766	-	30	-	944	732

* = Monthly Average over the four months.

PERFORMANCE OF VEGETABLE GHEE/COOKING OIL INDUSTRY

Report for the month of October 2025

Coverage

This report covers Fifty (50) Vegetable Ghee/Cooking Oil Mills of the Punjab Province.

Purchase, Consumption and Stock of Edible Oil

During the month of October 2025, about 40758 metric tons Local Oil and 22690 metric tons Imported Palm Oil was purchased by the Mills, meanwhile, about 35963 metric tons Other Oil was produced as compared to 24963 metric tons produced in the last month. The Oil intake for production of Vegetable Ghee/Cooking Oil during the month was recorded at 47941 metric tons witnessed 4.4% increase as compared to the last month. The stock of Oil at the end of the month was closed at 110062 metric tons.

Production, Sale and Stock of Vegetable Ghee/Cooking Oil

Vegetable Ghee and Cooking Oil production in the province during the month registered 0.1% percent increase as compared to last month. The data revealed about 84442 metric tons & 22559 metric tons production of Vegetable Ghee and Cooking Oil during the month respectively. The sale of Vegetable Ghee/Cooking Oil during the month was 106394 metric tons witnessed 0.2% percent increase as compared to the last month. The stock of Vegetable Ghee/Cooking Oil closed at the end of the month at 24705 metric tons.

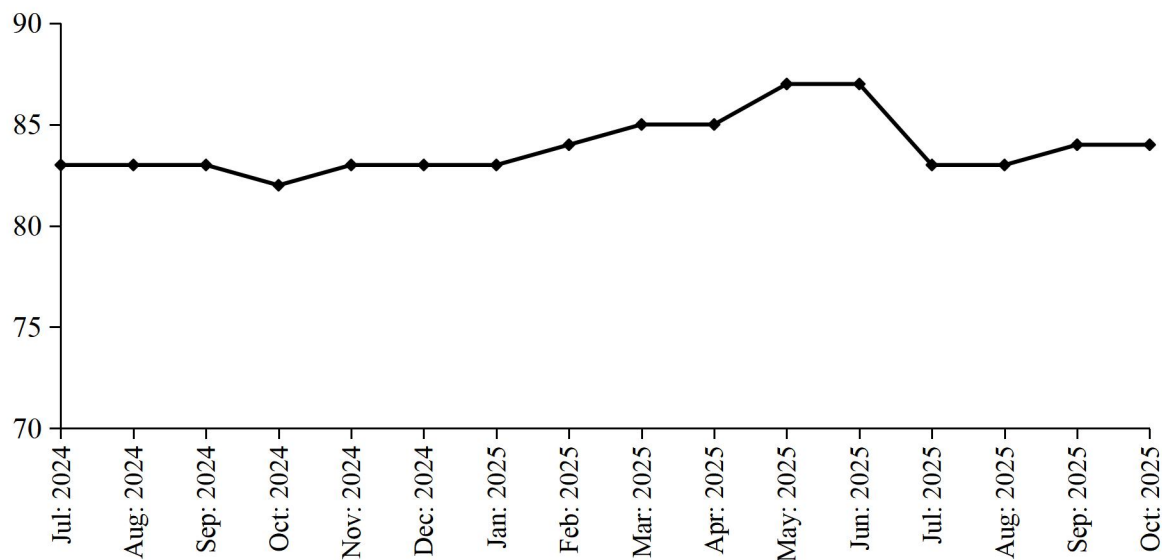
Employment and Wages/Salaries

Total employment recorded in the Mills of Vegetable Ghee/Cooking Oil during the month was 5890, which is 0.2% higher than the last month. Production workers was 3755 amount of Rs.129 million was paid by the Mills against total wages/salaries for the month of October 2025.

PRODUCTION OF VEGETABLE GHEE

July 2024 to October 2025

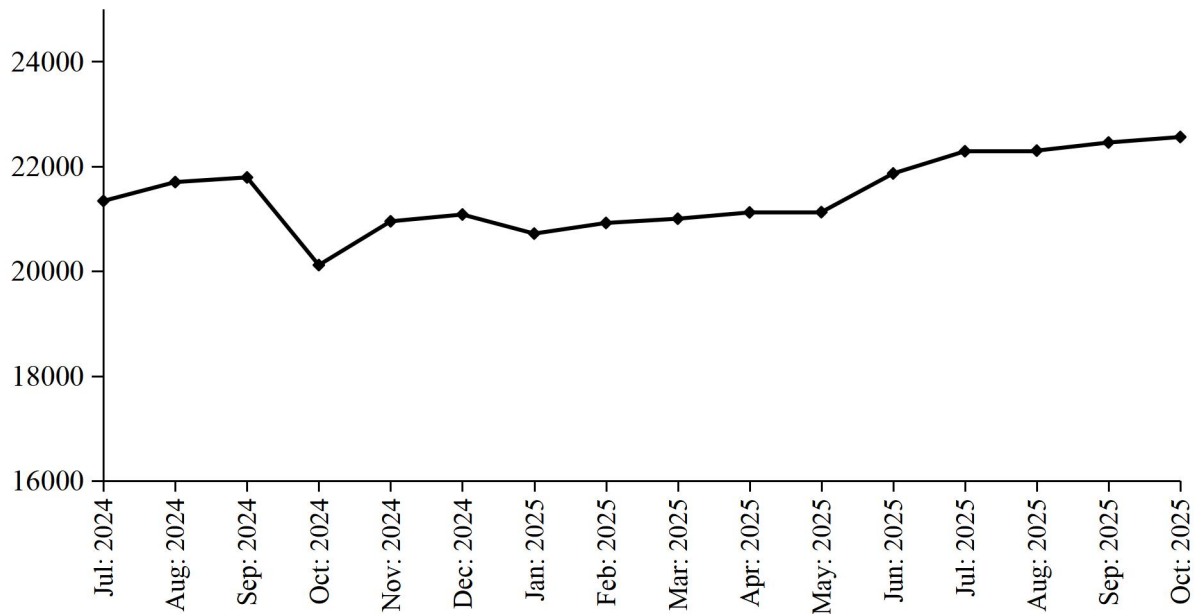
(000 M.Tons)



PRODUCTION OF COOKING OIL

July 2024 to October 2025

(000 M.Tons)



PRODUCTION OF VEGETABLE GHEE/COOKING OIL

July 2024 to October 2025

(000 M.Tons)

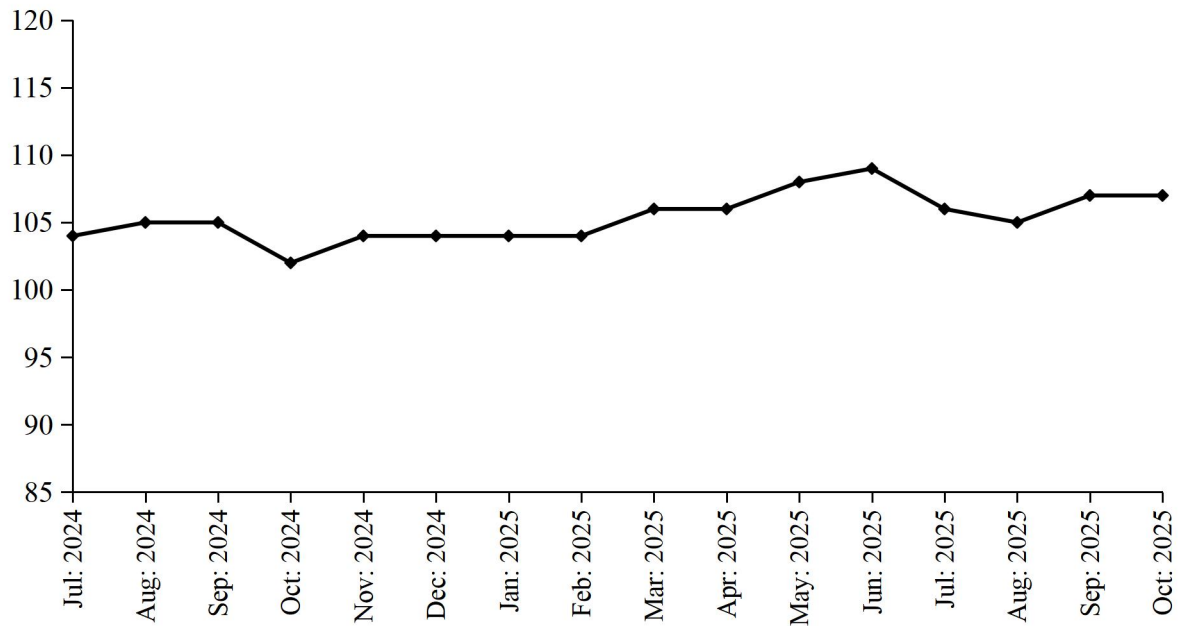


TABLE 15:DETAIL OF THE STOCK, PURCHASED, CONSUMED AND SALE OF EDIBLE OIL.

(M. Tons)

Year (July-June)/ Month	No. Of Repor- ting Mills	LOCALLY PURCHASED		PRODUCED		Impor- ted	Consumed / Sent for Refinery	Sold/ Trans- ferred	Stock at the end of Year/ Month
		Cotton Seed Oil	Other Oil	Cotton Seed Oil	Other Oil				
2008-09	54	-	100857	-	5206	398310	487250	-	32157
2009-10	54	-	104202	-	25852	512468	615680	25090	33909
2010-11	54	327	183884	-	35675	482008	634601	77461	23741
2011-12	54	-	183112	-	34577	423778	607993	37657	19558
2012-13	54	-	229765	-	43652	431163	660016	33454	30668
2013-14	54	-	216660	-	38972	495070	696775	42965	41630
2014-15	53	-	162624	-	49151	585062	753658	50338	34471
2015-16	53	-	185823	-	44073	885878	885882	18622	40602
2016-17	50	-	220571	-	60257	633199	881071	39566	33992
2017-18	51	-	206532	-	83627	849072	1074228	60975	38020
2018-19	51	-	213910	-	92005	836051	1055742	77884	46360
2019-20	52	-	248945	-	60421	715798	921638	102073	47813
2020-21	50	-	374560	-	84020	578628	837241	176122	65658
2021-22	44	-	363623	-	137479	560354	710634	330409	86071
2022-23	44	-	442323	-	147675	441595	481286	554926	81452
2023-24	44	-	463531	-	197118	363355	551880	468955	84621
2024-25	44	-	460980	-	221932	317718	508681	485945	90625
(Jul: - Oct:)	44	=	152100	=	71639	103978	172897	159808	79633
Jul:	44	-	37435	-	17206	27399	46653	40454	79554
Aug:	44	-	38225	-	18311	25763	43517	39458	78878
Sep:	44	-	38215	-	17811	25263	41117	39448	79602
Oct:	44	-	38225	-	18311	25553	41610	40448	79633
Nov:	44	-	38195	-	18271	25563	44086	37458	80118
Dec:	44	-	37725	-	18211	25463	41677	39342	80498
Jan:	44	-	37623	-	18111	25363	41518	39139	80938
Feb:	44	-	38225	-	18311	25763	41677	39233	82327
Mar:	44	-	39308	-	19499	27953	42718	41814	84555
Apr:	44	-	39266	-	19399	27903	42766	42014	86343
May:	44	-	39272	-	19401	27932	42788	43116	87044
June	44	-	39266	-	19090	27800	38554	44021	90625
2025-26									
(Jul:- Oct:)	44	=	160132	=	105663	92008	162924	175442	110062
Jul:	44	-	38858	-	19874	26165	41530	39680	94312
Aug:	44	-	38758	-	24863	21463	38998	41880	98518
Sep:	44	-	41758	-	24963	21690	39198	45941	101790
Oct:	44	-	40758	-	35963	22690	43198	47941	110062

TABLE 16:DETAIL OFPRODUCTION, SALE AND STOCK OF VEGETABLE GHEE/COOKING OIL

(M.Tons)

Year (July-June)/ Month	No. Of Repor- ting Mills	P R O D U C T I O N			Sale	Stock At the end
		Vegetable Ghee	Cooking Oil	Total		
2008-09	54	427976	60147	488123	486544	8119
2009-10	54	519765	87487	607252	606825	8546
2010-11	54	524809	96711	621520	622978	7088
2011-12	54	507688	93151	600839	600269	7658
2012-13	54	537111	119437	656548	654031	9059
2013-14	54	533628	20248	159078	156829	10897
2014-15	53	576943	102881	679824	679487	8985
2015-16	53	641889	113708	755597	755526	9057
2016-17	50	644550	110166	754716	755306	8170
2017-18	51	786226	127257	913483	912553	9100
2018-19	51	804497	152352	956849	944020	18074
2019-20	50	880796	193901	1074697	1076905	15866
2020-21	50	860505	198332	1058837	1063974	10729
2021-22	44	859227	193809	1053036	1051023	12742
2022-23	44	950409	217618	1168027	1168721	12048
2023-24	44	1006093	240923	1247016	1247368	11696
2024-25	44	1007623	253716	1261339	1252458	20577
(Jul: - Oct:)	<u>44</u>	<u>332086</u>	<u>84941</u>	<u>417027</u>	<u>415189</u>	<u>13534</u>
Jul:	44	83018	21339	104357	104306	11747
Aug:	44	83412	21699	105111	105359	11499
Sep:	44	83491	21788	105279	105193	11585
Oct:	44	82165	20115	102280	100331	13534
Nov:	44	82828	20952	103780	98533	18781
Dec:	44	83252	21080	104332	103353	19760
Jan:	44	82969	20716	103685	103323	20122
Feb:	44	83515	20919	104434	102874	21682
Mar:	44	84545	21000	105545	104020	23207
Apr:	44	84650	21120	105770	104140	24837
May:	44	86520	21125	107645	107815	24667
June	44	87258	21863	109121	113211	20577
<u>2025-26</u>						
(Jul: - Oct:)	<u>44</u>	<u>335250</u>	<u>89599</u>	<u>424849</u>	<u>420721</u>	<u>24705</u>
Jul:	44	83309	22287	105596	104279	21894
Aug:	44	83172	22299	105471	104397	22968
Sep:	44	84327	22454	106781	105651	24098
Oct:	44	84442	22559	107001	106394	24705

TABLE 17:EMPLOYMENT AND WAGES/SALARIES.

Year (July-June)/ Month	No. Of Reporting Mills	E M P L O Y M E N T (NOS)*			WAGES/SALARIES (000 Rs.)	
		Total	Production Workers	Office Staff	Total	Production Workers
2008-09	54	3406	2109	1297	23522	12589
2009-10	54	3449	2176	1273	30532	17526
2010-11	54	3675	2366	1309	34883	20727
2011-12	54	3703	2558	1145	35708	20873
2012-13	54	3798	2625	1173	40008	23277
2013-14	54	4072	2753	1319	50720	28667
2014-15	53	4009	2756	1253	55717	31302
2015-16	53	4122	2901	1221	64521	38408
2016-17	50	3933	2678	1255	62720	35328
2017-18	51	4105	2737	1368	65889	38083
2018-19	52	4111	2787	1324	69521	39564
2019-20	50	5001	3286	1715	77791	41351
2020-21	50	5111	3250	1861	91913	42105
2021-22	44	5295	3287	2008	99277	48422
2022-23	44	5649	3464	2185	122345	59546
2023-24	44	5904	3744	2160	130030	61366
2024-25	44	5849	3718	2131	129482	60808
(Jul: - Oct:)	<u>44</u>	<u>5850</u>	<u>3718</u>	<u>2132</u>	<u>129210</u>	<u>60668</u>
Jul:	44	5831	3682	2149	129217	60715
Aug:	44	5876	3728	2148	129221	60720
Sep:	44	5878	3730	2148	129225	60723
Oct:	44	5816	3730	2086	129178	60513
Nov:	44	5876	3728	2148	129669	60837
Dec:	44	5896	3738	2158	129770	61038
Jan:	44	5876	3728	2148	129669	60837
Feb:	44	5820	3699	2121	129558	60800
Mar:	44	5825	3710	2115	129665	60900
Apr:	44	5830	3712	2118	129700	60950
May:	44	5836	3721	2115	129216	60710
Jun:	44	5830	3712	2118	129700	60950
<u>2025-26</u>						
(Jul: - Oct:)	<u>44</u>	<u>5853</u>	<u>3722</u>	<u>2131</u>	<u>129250</u>	<u>60751</u>
Jul:	44	5830	3707	2123	129217	60715
Aug:	44	5813	3696	2117	129221	60720
Sep:	44	5878	3730	2148	129225	60723
Oct:	44	5890	3755	2135	129336	60845

* =Monthly averages over the four months.

PERFORMANCE OF BEVERAGES INDUSTRY

Report for the month of October 2025

Coverage

The report covers Thirty (30) Beverages factories of the Punjab.

Production

The factories produced 190841 thousand litres of Soft Drinks and 20300 thousand litres of Fruit Juices during October 2025. The production of Soft Drinks and Fruit Juices was 2.7% lower and 5.7% higher than the last month respectively.

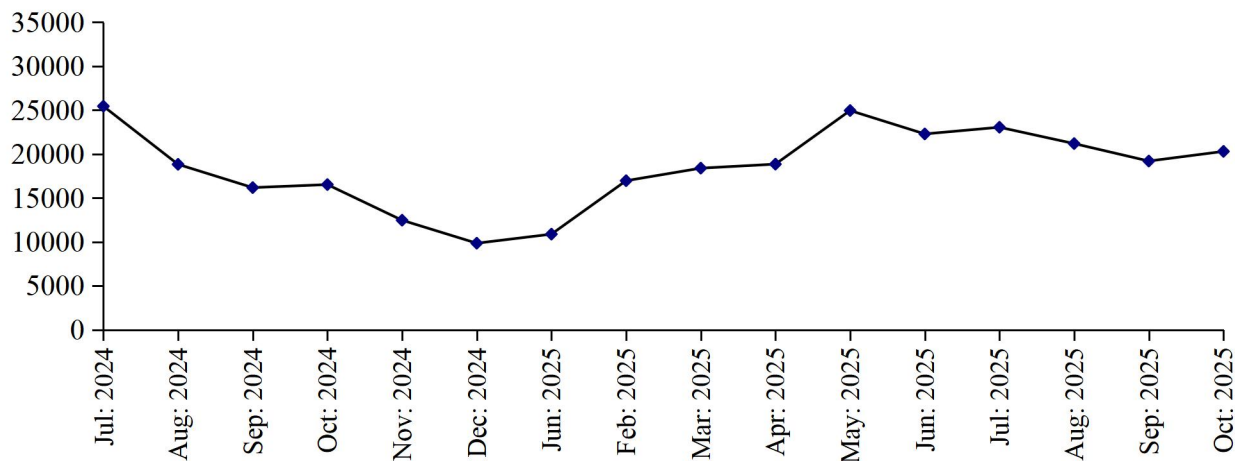
Employment

Total employment in these factories was 11440 which was 0.2% lower than the last month. Out of this total employment 7526 were production workers.

PRODUCTION OF FRUIT JUICES

July 2024 to October 2025

('000'Ltrs)



PRODUCTION OF SOFT DRINKS

July 2024 to October 2025

('000'Ltrs)

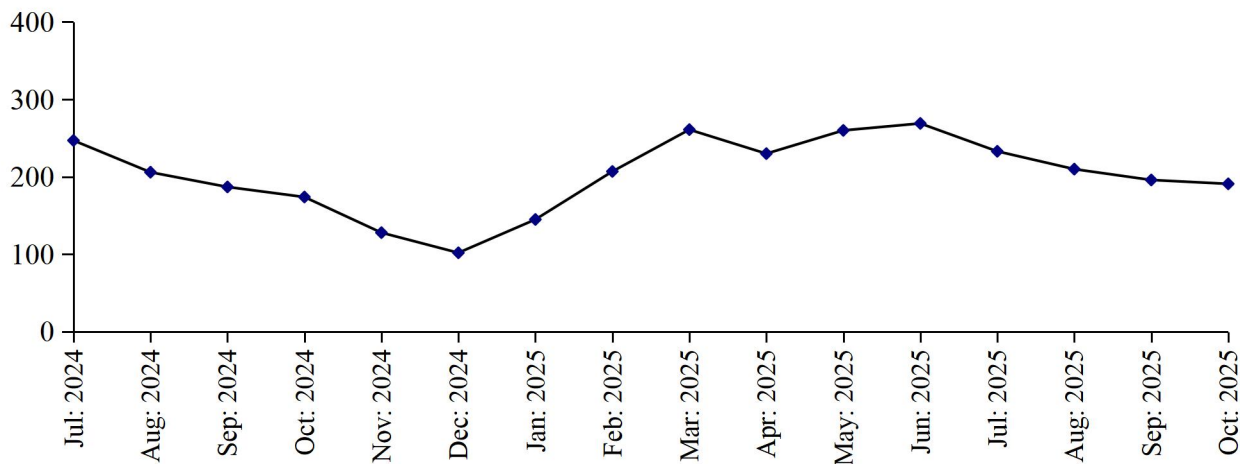


Table 18: MANUFACTURING ACTIVITY OF BEVERAGES INDUSTRY.

Year (July-June)/ Month	No. Of Reporting Units	PRODUCTION (in '000' Ltrs)		EMPLOYMENT (NOS.)*	
		Soft Drinks	Fruit Juices	Total	Production Workers
2008-09	37	1445760	67932	6492	3037
2009-10	37	1041643	68020	6925	3323
2010-11	37	982963	92115	7577	3027
2011-12	37	1155234	116048	7948	3136
2012-13	37	1349580	120176	8224	3501
2013-14	37	1409663	127571	8125	3659
2014-15	34	1552102	156889	8328	4379
2015-16	30	1722698	139237	15461	8600
2016-17	29	1964432	154877	8549	3997
2017-18	30	1893694	177397	8981	4216
2018-19	31	1830166	219885	8529	4306
2019-20	31	1587814	183550	8173	4099
2020-21	31	1964275	172608	7988	4053
2021-22	30	2258557	215698	8173	4210
2022-23	30	2196507	227924	8244	4267
2023-24	30	2110368	211991	9250	5424
2024-25	30	2416528	211611	11485	7695
(Jul: - Oct:)	<u>30</u>	<u>814784</u>	<u>76974</u>	<u>11534</u>	<u>7777</u>
Jul:	30	247096	25445	11585	8042
Aug:	30	206060	18827	11556	7722
Sep:	30	187336	16179	11522	7709
Oct:	30	174292	16523	11474	7634
Nov:	30	128057	12466	11402	7595
Dec:	30	101641	9848	11412	7560
Jan:	30	144704	10879	11186	7583
Feb:	30	207405	16962	11369	7794
Mar:	30	261075	18392	11508	7879
Apr:	30	229851	18849	11643	7601
May:	30	259883	24952	11603	7610
June:	30	269128	22289	11562	7611
<u>2025-26</u>					
(Jul: - Oct:)	<u>30</u>	<u>830603</u>	<u>83742</u>	<u>11491</u>	<u>7562</u>
Jul:	30	233223	23050	11555	7604
Aug:	30	210498	21190	11512	7574
Sep:	30	196041	19202	11458	7544
Oct:	30	190841	20300	11440	7526

* =Monthly Average over the four months.

PERFORMANCE OF SUGAR INDUSTRY

Report for the month of October 2025

Coverage

This report covers Forty four (44) Sugar Mills located in the Punjab Province.

Cane Crushing

Total cane crushed for the month of “October ” 2025, because of the off crushing season.

Production

Total Sugar Produced during the month of “October” 2025, is nil due to off season.

Sale and Stock of Sugar 2024-25

The sugar sold out from the previous stock as reported during the month of October 2025 was 66584 Metric Tons and the remaining stock of sugar is 120745 Metric Tons.

Employment and Wages / Salaries

Total employment during the month of October 2025 was 26368. Out of this total employment, the number of production workers were 17886. The total wages/salaries during this month is amounted to 951 million rupees.

MONTHLY PRODUCTION OF SUGAR

Season 2024-25 VS 2025-26

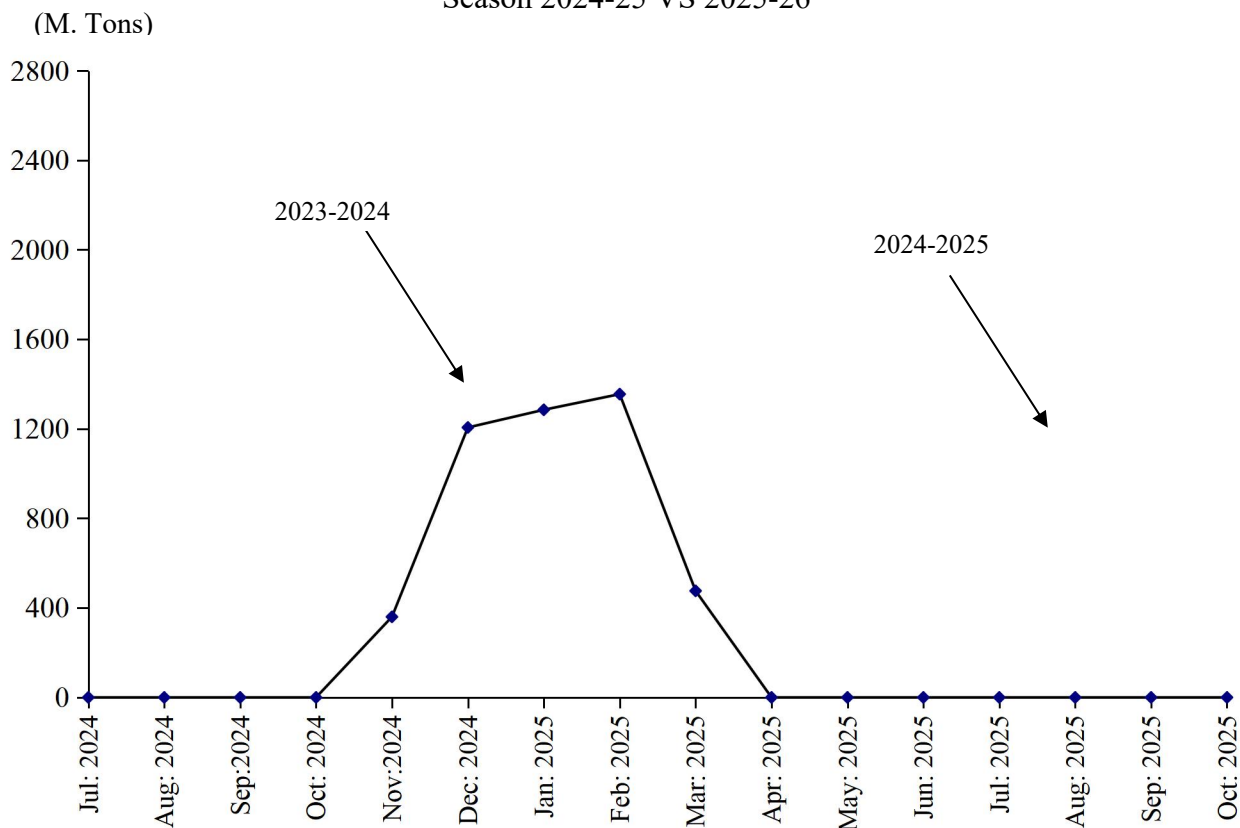


Table 19: MANUFACTURING ACTIVITY OF SUGAR INDUSTRY.

(Metric Tons)

Year	Months	No. Of Units Covered	Sugarcane Crushed	Opening Stock Of Sugar	Production Of Sugar	Sale Of Sugar	Closing Stock Of Sugar	Molasses
2008-09	Nov:08-Apr:09	45	20388990	-	1926209	-	-	1280422
2009-10	Nov:09 –March10	46	22460655	-	1987285	-	-	887362
2010-11	Nov:10 –April 11	46	27026172	128193	2475907	2013178	590922	709876
2011-12	Oct: 11- Apr: 12	46	32310644	590922	3057611	2633244	1015289	750699
2012-13	Nov:12–May 13	46	35745878	1015289	3739171	4064180	690280	666328
2013-14	Nov:13–Apr: 14	46	30864941	690280	3075144	2013384	1752040	807507
2014-15	Nov:14–Apr: 15	46	31453631	1752040	3036312	2775995	2012357	66682
2015-16	Nov:15–Apr: 16	44	28922605	2012357	2666278	2951038	1727597	571184
2016-17	Nov: 16-Apr: 17	44	44143327	1727597	4314228	2754948	3286877	1522522
2017-18	Nov: 17-Apr: 18	45	53190310	3286877	5111165	6745070	1652972	1352698
2018-19	Dec: 18-Apr: 19	45	30835769	1652972	4868545	4278122	2243395	1361477
2019-20	Nov: 19-Mar:20	44	23839905	1973322	3102104	4054794	1020632	671189
2020-21	Nov: 20-Mar:21	44	50011167	1020632	3877150	3620582	1277200	1166132
2021-22	Nov:21-Apr:22	44	47559505	1277200	5258131	4696627	1838704	2631504
2022-23	Nov:22-Apr:23	44	21410225	1838704	5575980	5397591	2017093	778634
2023-24	Nov: - Apr: 24	44	5352291	2017093	5104124	6019153	1102064	1164697
2024-25	Nov:-Mar:25	44	8464867	527849	4681455	4702176	507128	751203
<u>2025-26</u>		<u>44</u>	<u>=</u>	<u>507128</u>	<u>=</u>	<u>386383</u>	<u>120745</u>	<u>=</u>
	Jul:	44	-	507128	-	131719	375409	-
	Aug:	44	-	375409	-	74836	300573	-
	Sep:	44	-	300573	-	113244	187329	-
	Oct:	44	-	187329	-	66584	120745	

TABLE 20: EMPLOYMENT AND WAGES / SALARIES

Year /Months	No. Of Units Covered	EMPLOYMENT (Nos.)			WAGES / SALARIES (000 Rs.)	
		Total	Production Workers	Office Staff	Total	Production Workers
2009-10	46	24448	15250	9197	197290	116870
(Crushing Season)		31580	20435	11145	247830	153135
(Non-Crushing Season)		19354	11547	7807	161190	90967
2010-11	46	22967	14468	8499	209749	126526
(Crushing Season)		27879	18340	9539	246395	154557
(Non-Crushing Season)		18055	10595	7459	173102	98495
2011-12	46	23078	13932	9145	230146	132212
(Crushing Season)		26017	10957	8007	204749	111423
(Non-Crushing Season)		18964	16058	9959	248287	147060
(2012-13)	46	25311	16021	9848	276892	171611
(Crushing Season)	46	28541	19094	10404	318296	203325
(Non-Crushing Season)	46	20788	11719	9069	127701	127212
(2013-14)	46	25672	16563	9009	318239	196709
(Crushing Season)	46	29968	19690	10278	366452	229798
(Non-Crushing Season)	46	21300	13907	7393	260446	162496
(2014-15)	46	23845	15042	8804	337354	207609
(Crushing Season)	46	27988	18137	9852	389645	244041
(Non-Crushing Season)	46	19703	11947	7755	285051	171178
(2015-16)	44	22554	14023	8531	341965	205969
(Crushing Season)	44	25752	16141	9611	388494	237002
(Non-Crushing Season)	44	19356	11738	7618	298435	174937
2016-17	45	24469	14900	9569	404061	250817
(Crushing Season)	45	30354	18632	11722	480241	305510
(Non-Crushing Season)	45	18583	11168	7415	327881	156664
2017-18	45	26874	16910	9964	588807	325440
(Crushing Season)	45	31429	20009	11419	706001	393686
(Non-Crushing Season)	45	22318	13810	8507	471613	257195
2018-19	45	28234	18208	10226	720481	406815
(Crushing Season)	45	32495	21556	10939	794668	459287
(Non-Crushing Season)	45	25190	15817	9373	667492	369336
2019-20	45	19599	12795	6834	419356	265765
(Crushing Season)	45	31689	21217	10472	722697	285965
(Non-Crushing Season)	45	22940	15223	9373	7717	507681
2020-21	44	27571	17326	10245	616305	359633
(Crushing Season)	44	33603	21507	12096	692380	424448
(Non-Crushing Season)	44	21538	13145	8393	540231	294819
2021-22	44	28202	17665	10537	680443	439798
(Crushing Season)	44	34807	21899	12908	760582	504374
(Non-Crushing Season)	44	21597	13430	8167	600255	375223
2022-23	44	28585	18343	10242	735006	503106
(Crushing Season)	44	36555	24339	12216	829622	487871
(Non-Crushing Season)	44	22893	14203	8690	667423	431143
2023-24	44	64390	43790	20600	752478	506309
(Crushing Season)	44	64390	24339	12216	781663	526791
(Non-Crushing Season)	44	22893	14203	8690	711619	485826
2024-25	44	31551	21600	9951	754552	519899
(Crushing Season)	44	37583	24725	12858	821994	582885
(Non-Crushing Season)	44	27243	13368	7875	706379	474909
2025-26						
(Jul:-Oct:)	44	26761	18468	9293	957973	636843
Jul:	44	27269	19086	8183	976439	655589
Aug:	44	27037	18918	8116	952237	631392
Sep:	44	26371	17981	8390	952000	630290
Oct	44	26368	17886	8482	951214	630100

*= Monthly average over the four months./ crushing/Non crushing season.

PERFORMANCE OF CIGARETTES INDUSTRY

Report for the month of October 2025

Coverage

This report covers three (03) Cigarettes factories of the Punjab.

Production

The production of Cigarettes during the month was 1542 Million Nos. Which was 0.7% higher than September 2025.

Sale and Stock

Sale of Cigarettes during the month was 1551 Million Nos. Which was 0.1% higher the last month.

Employment

Total employment in these factories during the month was 658, which was same as the last month. Out of this total employment, 425 were production workers. Total wages/salaries for the month were amounted to Rs.69.0 Millions.

PRODUCTION OF CIGARETTES

July 2024 to October 2025

(Millions Nos.)

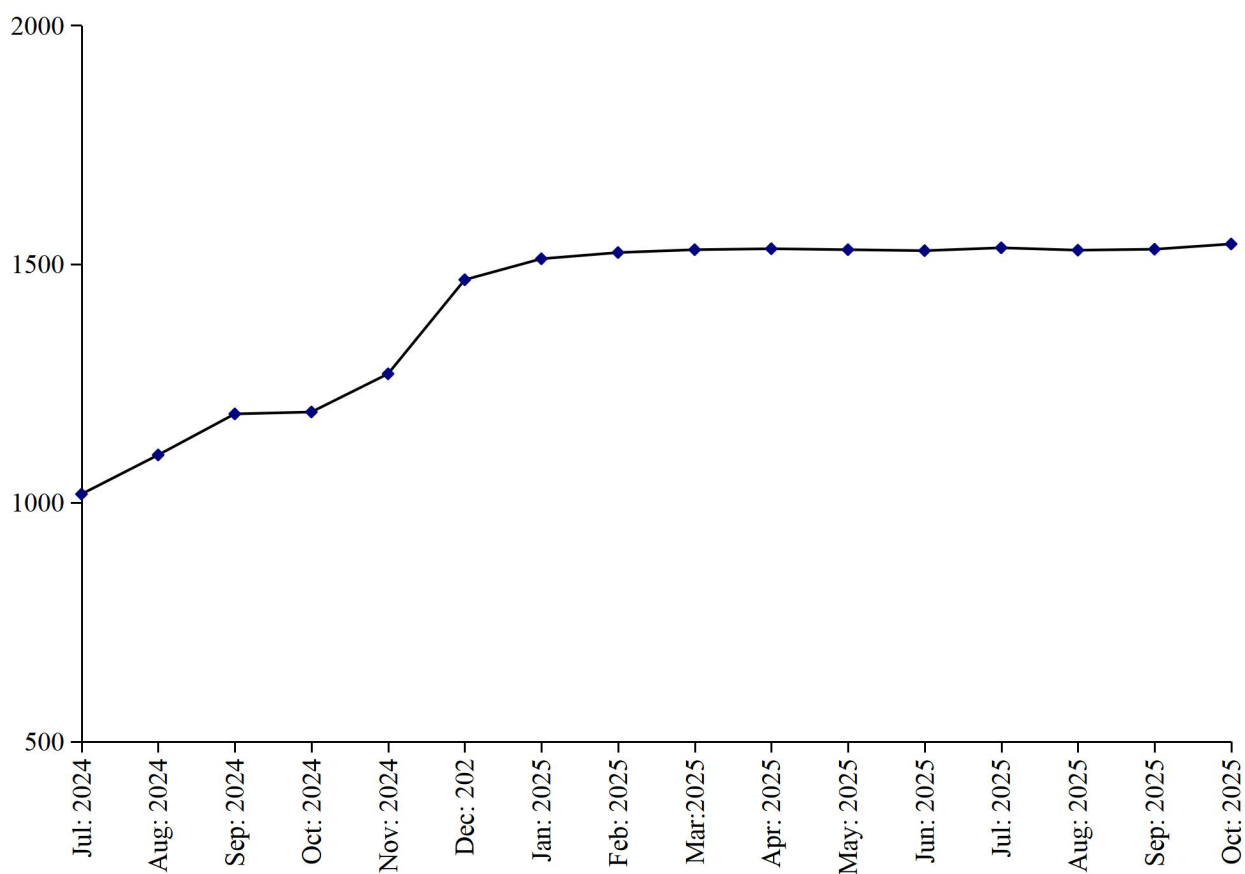


Table No.21 MANUFACTURING ACTIVITY OF CIGARETTES INDUSTRY.

Year (July-June)/ Month	No. Of Reporting Units	PRODUCTION,SALE & STOCK OF CIGARETTES (<i>Million Nos.</i>)			EMPLOYMENT* (<i>Nos.</i>)		WAGES/SALARIES (<i>'000'Rs.</i>)	
		Production	Sale	Stock at the end	Total	Production Workers	Total	Production Workers
2008-09	3	43058	42901	667	1307	1089	23946	18512
2009-10	3	37296	36987	976	1269	1136	26379	20638
2010-11	3	37944	37420	1500	1178	1051	28432	25294
2011-12	3	34955	35961	494	998	898	32942	29936
2012-13	3	37845	37996	343	907	811	27023	22214
2013-14	3	33094	24934	8503	904	797	27781	22032
2014-15	3	33966	38328	4141	905	793	32807	24413
2015-16	3	27502	29914	1729	808	707	33019	24855
2016-17	3	28452	27135	3046	603	509	33264	25008
2017-18	3	28324	30503	867	509	425	32139	23057
2018-19	3	35850	27486	9231	552	446	36978	21686
2019-20	3	25634	21861	13234	640	493	45641	20945
2020-21	3	21353	19306	15124	657	494	50439	21564
2021-22	3	19438	19013	15549	658	490	55998	24776
2022-23	3	15820	23373	7996	618	414	64979	33029
2023-24	3	11101	16698	2075	600	359	68659	29570
2024-25	3	16386	16309	2152	648	412	69104	28490
(Jul: - Oct:)	3	<u>4494</u>	<u>4476</u>	<u>2093</u>	<u>636</u>	<u>402</u>	<u>69087</u>	<u>28345</u>
Jul:	3	1018	1119	1974	632	400	69034	28315
Aug:	3	1100	1115	1959	632	400	69034	28315
Sep:	3	1186	1123	2022	634	402	69037	28318
Oct:	3	1190	1119	2093	645	405	69241	28430
Nov:	3	1270	1130	2233	647	410	69037	28180
Dec:	3	1467	1142	2558	653	416	69147	30318
Jan:	3	1511	1542	2527	653	416	69137	28318
Feb:	3	1524	1442	2609	655	420	69137	28318
Mar:	3	1530	1643	2496	655	420	69137	28315
Apr:	3	1532	1645	2383	657	422	69237	28418
May	3	1530	1643	2270	655	420	69037	28318
Jun:	3	1528	1646	2152	655	420	69037	28318
<u>2024-25</u>								
(Jul: - Oct:)		<u>6135</u>	<u>6293</u>	<u>1994</u>	<u>658</u>	<u>425</u>	<u>69037</u>	<u>28318</u>
Jul:	3	1534	1647	2039	658	425	69037	28318
Aug:	3	1529	1547	2021	658	425	69037	28318
Sep:	3	1531	1549	2003	658	425	69037	28318
Oct:	3	1541	1550	1994	658	425	69037	28318

* = Monthly Average over the four months.

PERFORMANCE OF CEMENT INDUSTRY

Report for the month of October 2025

Coverage

This report covers eleven (11) factories in the Punjab.

Production of Clinker

The cement factories produced 1707887 Metric Tons of Clinker during October 2025, which was 1.2% lower than the last month. The factories consumed 1729550 Metric Tons of Clinker to produce Cement.

Production of Cement

The cement factories produced 2138044 Metric Tons of Cement during the month, which was 20.2% higher than the last month.

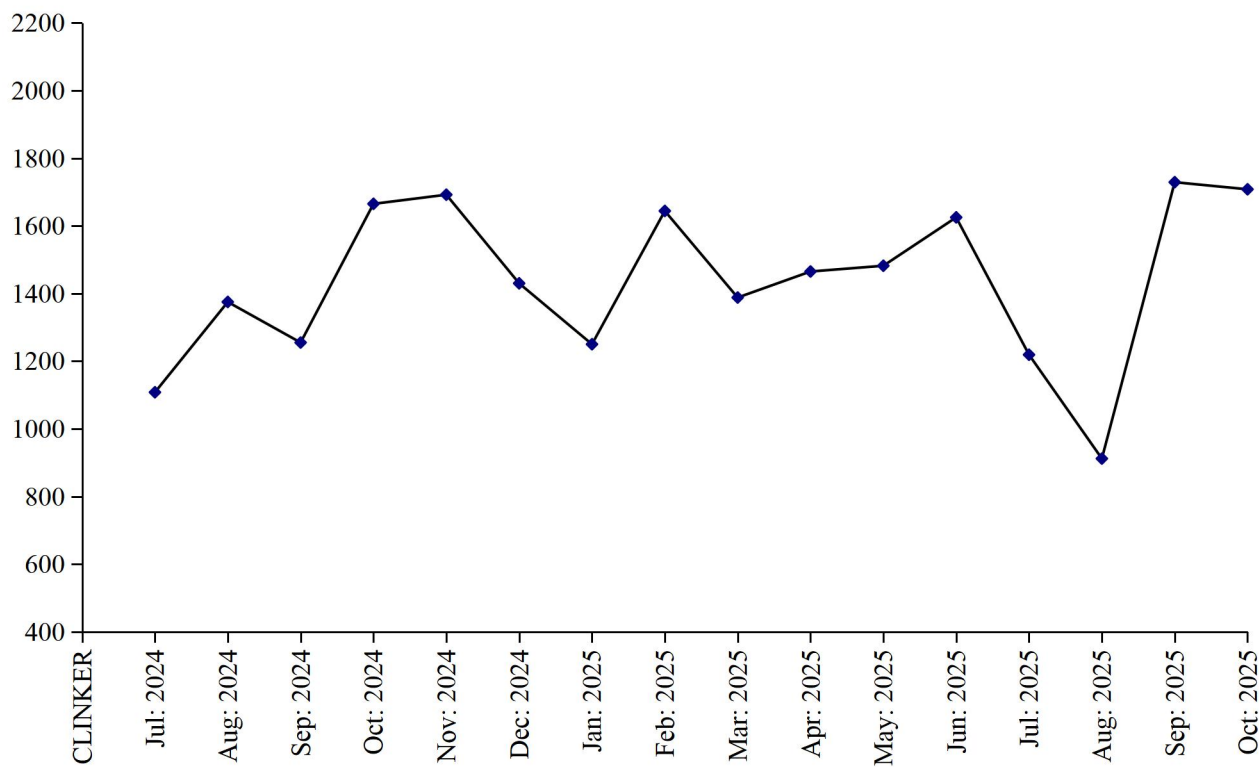
Employment

Total employment in the factories as reported was 7464 which is 0.1% higher than the last month. Out of this total employment, 4357 were production workers. Total wages/salaries for the month under report were 944.8 Million Rupees.

PRODUCTION OF CLINKER

July 2024 to October 2025

(000 M. Tons)



PRODUCTION OF CEMENT

July 2024 to October 2025

(000 M. Tons)

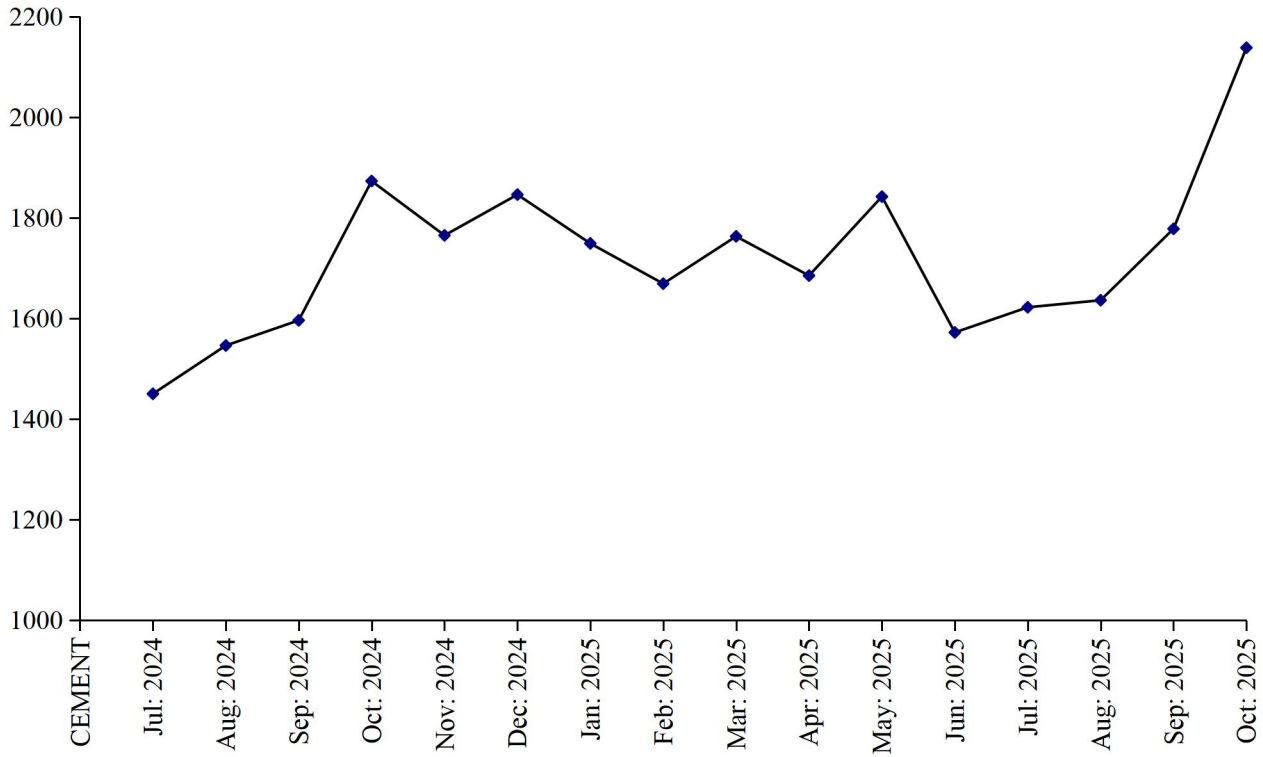


Table No.22 DETAIL OF PRODUCTION, CONSUMPTION AND STOCK OF CLINKER.

(M.Tons)

Year (July-June)/ Month	No. Of reporting Units	Stock at the Beginning	Production	Consumption	Stock at the end
2008-09	13	397777	14275929	13996684	677022
2009-10	13	677022	15438372	15593172	522222
2010-11	13	522222	14340746	13920004	942964
2011-12	13	942964	13937197	13851368	1028793
2012-13	12	1028793	15210981	14730923	1508851
2013-14	12	1508851	15780981	15535319	1754513
2014-15	12	1754513	15926314	15853807	1827020
2015-16	12	1827020	15973852	17140392	660480
2016-17	12	660480	19101688	18498074	1264094
2017-18	12	1264094	20080615	19767345	1577364
2018-19	12	1577364	18892935	18992061	1478238
2019-20	12	1478238	19838457	19197793	2118902
2020-21	12	2118902	21735282	21668097	2186087
2021-22	12	2186087	22442834	22063309	2565612
2022-23	12	2251510	19792339	19864127	2179722
2023-24	12	2179722	17353831	17763049	1770504
2024-25	12	1770504	17379037	17430744	1718798
(Jul: - Oct:)	<u>11</u>	<u>1770504</u>	<u>5403658</u>	<u>5632127</u>	<u>1542035</u>
Jul:	11	1770504	1108415	1201412	1677507
Aug:	11	1677507	1375146	1328510	1724143
Sep:	11	1724143	1255231	1460985	1518389
Oct:	11	1518389	1664866	1641220	1542035
Nov:	11	1542035	1691967	1495868	1738134
Dec:	11	1738434	1430184	1632683	1535635
Jan:	11	1535635	1250397	1491025	1295007
Feb:	11	1295007	1643585	1434868	1503724
Mar:	11	1503724	1387621	1537238	1354107
Apr:	11	1354107	1465123	1246384	1572846
May:	11	1572846	1481782	1648114	1406514
Jun:	11	1406514	1624721	1312437	1718798
<u>2025-26</u>					
(Jul: - Oct:)	<u>11</u>	<u>1718798</u>	<u>5567602</u>	<u>6105418</u>	<u>1180983</u>
Jul:	11	1718798	1218906	1449237	1488467
Aug:	11	1488467	911740	1360231	1039976
Sep:	11	1039976	1729069	1566400	1202645
Oct:	11	1202645	1707887	1729550	1180983

Table No.23 DETAIL OF PRODUCTION, SALE AND STOCK OF CEMENT

(M.Tons)

Year (July- June)/ Month	No. Of Reporting Units	Stock at the beginning	Production	S O L D			Stock at the end
				Total	Within country	Export- ted	
2008-09	13	91271	14227580	14068486	14068486	-	250365
2009-10	13	250365	16951531	16973086	16973086	-	228810
2010-11	13	228810	14685518	14528966	14528966	-	385362
2011-12	13	385362	15269328	15299852	15299852	-	354838
2012-13	12	354838	15929819	15922363	15922363	-	362294
2013-14	12	362294	16668915	16472689	16472689	-	558520
2014-15	12	558520	17175158	17358446	17358446	-	375232
2015-16	12	375232	18479957	18588721	18588721	-	266468
2016-17	12	266468	19569160	19445145	19445145	-	390483
2017-18	12	390483	22067871	22188484	22188484	-	269870
2018-19	12	269870	21077461	20903996	20903996	-	443335
2019-20	12	443335	20386575	20021979	20021979	-	807931
2020-21	12	807931	24535481	24360442	24360442	-	982970
2021-22	12	982970	25551134	25220928	25220928	-	1313176
2022-23	12	1313176	22316924	22263250	22263250	-	1366850
2023-24	12	1366850	20380376	20362441	20362441	-	1384785
2024-25	12	1384785	20356331	20526531	20526531	-	1214585
(Jul: - Oct:)	11	1384785	6465276	6433726	6433726	=	1416335
Jul:	11	1384785	1449889	1409990	1409990	-	1424684
Aug:	11	1424684	1546040	1568924	1568924	-	1401800
Sep:	11	1401800	1596184	1617710	1617710	-	1380274
Oct:	11	1380274	1873163	1837102	1837102	-	1416335
Nov:	11	1416335	1765037	1829748	1829748	-	1351624
Dec:	11	1351624	1846320	1836514	1836514	-	1361430
Jan:	11	1361430	1749116	1780924	1780924	-	1329622
Feb:	11	1329622	1668633	1691014	1691014	-	1307241
Mar:	11	1307241	1763106	1702449	1702449	-	1367898
Apr:	11	1367898	1685463	1705146	1705146	-	1348215
May:	11	1348215	1841838	1989498	1989498	-	1200555
Jun:	11	1200555	1571542	1557512	1557512	-	1214585
2025 - 26							
(Jul: - Oct:)	11	1214585	7174293	7254138	7254138	=	1134740
Jul:	11	1214585	1622029	1643614	1643614	-	1193000
Aug:	11	1193000	1635755	1676229	1676229	-	1152526
Sep:	11	1152526	1778465	1797836	1797836	-	1133155
Oct:	11	1133155	2138044	2136459	2136459	-	1134740

Table No.24 EMPLOYMENT AND WAGES/SALARIES OF CEMENT INDUSTRY

Year (July-June)/ Month	No. Of Reporting Units	EMPLOYMENT (No)*			WAGES/SALARIES (000 Rs.)	
		Total	Production Workers	Non-Production Workers	Total	Production Workers
2008-09	13	5858	3906	1952	137089	755759
2009-10	13	6272	4292	1980	157409	80564
2010-11	13	6713	4631	2082	177979	94502
2011-12	13	6614	4729	1885	195861	115717
2012-13	12	6463	4591	1872	226498	135792
2013-14	12	6593	4648	1945	241852	140576
2014-15	12	6767	4817	1950	301847	178187
2015-16	12	7046	5009	2037	384190	222124
2016-17	12	7627	5178	2448	521509	292515
2017-18	12	8033	5262	2771	729712	399586
2018-19	12	8077	5360	2717	668155	384602
2019-20	12	7988	5400	2588	634682	387052
2020-21	12	7912	5328	2583	661961	405863
2021-22	12	7969	5325	2644	717914	438054
2022-23	12	7394	4514	2880	668006	366140
2023-24	12	7353	4335	3018	785991	399350
2024-25	11	7454	4347	3107	853364	423362
(Jul: - Oct:)	<u>11</u>	<u>7447</u>	<u>4306</u>	<u>3141</u>	<u>854517</u>	<u>439996</u>
Jul:	11	7422	4249	3173	799199	373700
Aug:	11	7420	4246	3174	863143	407702
Sep:	11	7490	4374	3116	880073	551575
Oct:	11	7457	4356	3111	875651	427005
Nov:	11	7501	4399	3102	856606	416261
Dec:	11	7493	4387	3106	862047	418083
Jan:	11	7474	4385	3089	850186	414207
Feb:	11	7466	4375	3091	847149	415118
Mar:	11	7442	4358	3084	847471	413587
Apr:	11	7422	4356	3066	848202	410790
May:	11	7425	4345	3080	853336	415432
Jun:	11	7432	4344	3088	857305	416889
<u>2025 – 26</u>						
(Jul: - Oct:)	<u>11</u>	<u>7445</u>	<u>4347</u>	<u>3099</u>	<u>900504</u>	<u>436773</u>
Jul:	11	7426	4339	3067	845627	410507
Aug:	11	7432	4335	3097	884591	428890
Sep:	11	7459	4356	3103	926951	446920
Oct:	11	7464	4357	3107	944845	460774

* = Monthly average over the four months.

PERFORMANCE OF FERTILIZER INDUSTRY

Report for the month of October 2025

Coverage

This report covers Seven (07) fertilizer factories in the Punjab Province.

Production

These factories produced 324781 Metric Tons of Urea, 0 Metric Tons of Super Phosphate, 74704 Metric Tons of Amm. Nitrate and 74833 Metric Tons of Nitro Phosphate. The overall production of Fertilizer during the month was 3.6% lower than the last month.

Sale and Stock

These fertilizer factories reported a sale of 341849 Metric Tons of Urea, 0 Metric Tons of Super phosphate, 75884 Metric Tons of Amm. Nitrate and 76733 Metric Tons of Nitro Phosphate. The stock of Urea, Super Phosphate, Amm. Nitre and Nitro Phosphate at the end of the month was 386012, 5, 13330 and 8234 Metric Tons respectively.

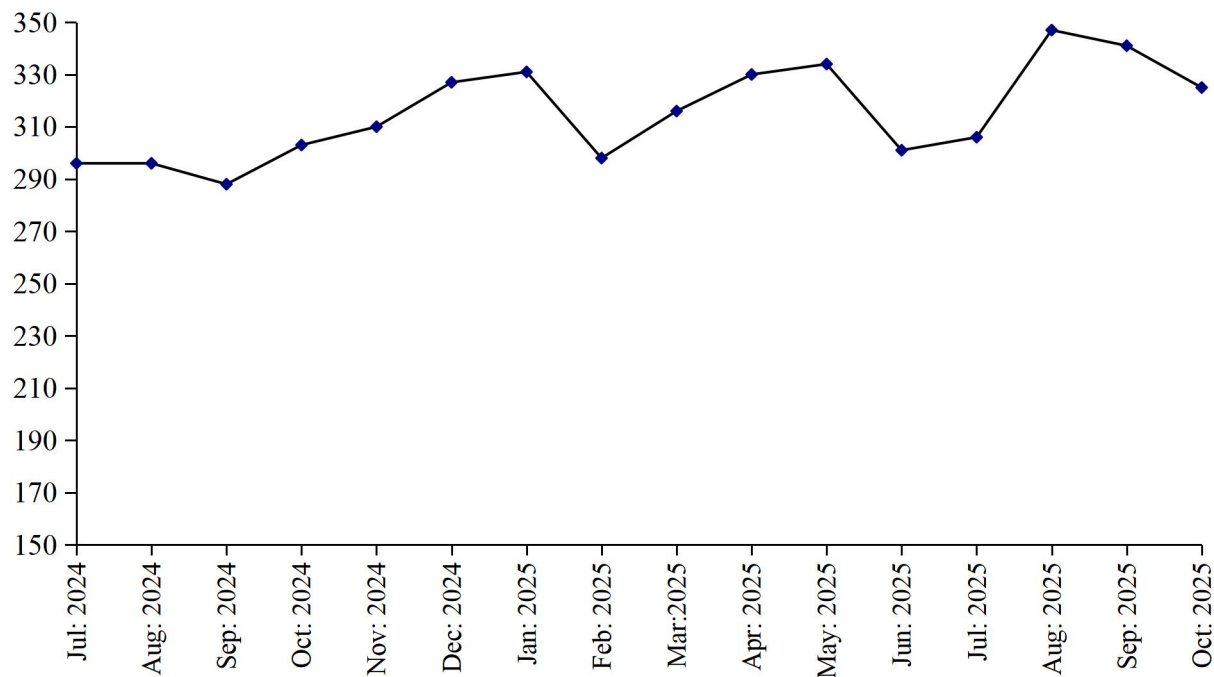
Employment and Wages/Salaries

Total employment during the month was 5545 which is. 0.1% higher than the last month. Out of this total employment 3495 were production workers. Total Wages/Salaries for the month under report were amounted to 1211 Million Rupees.

PRODUCTION OF UREA

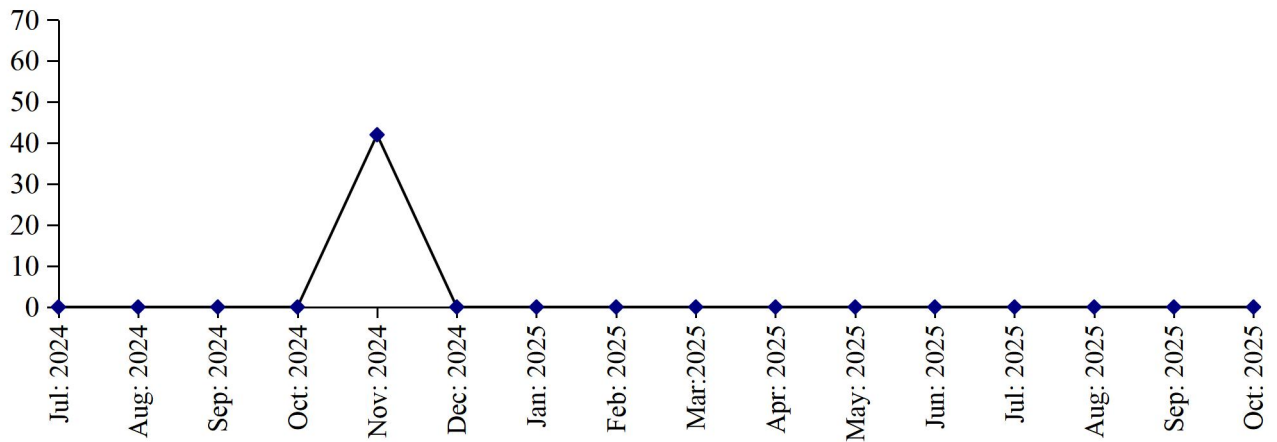
July 2024 to October 2025

(000 M. Tons)



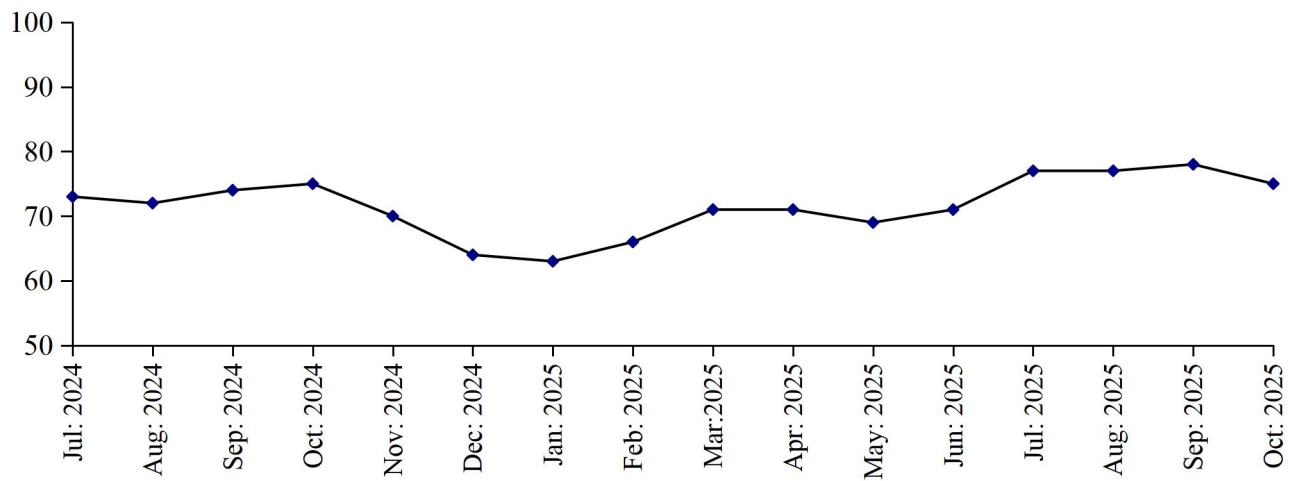
PRODUCTION OF SUPER PHOSPHATE

(M. Tons) July 2024 to October 2025



PRODUCTION OF AMM. NITRATE

(000 M. Tons) July 2024 to October 2025



PRODUCTION OF NITRO PHOSPHATE

(000 M. Tons) July 2024 to October 2025

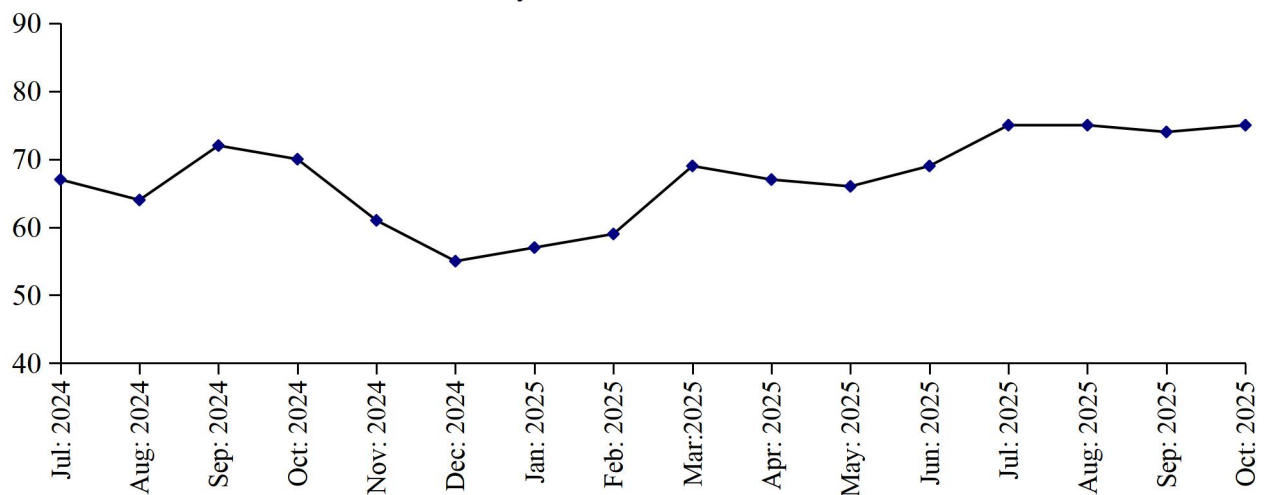


Table No: 25 DETAIL OF PRODUCTION, SALE AND STOCK OF UREA AND AMM. SULPHATE

(M. Tons)

Year (July-June)/ Month	U R E A			AMM. SULPHATE		
	Production	Sale	Stock at The end	Production	Sale	Stock at the end
2008-09	3377275	3404025	15570	-	-	-
2009-10	3431545	3374056	73059	-	-	-
2010-11	3016783	3064387	25455	-	-	-
2011-12	2750392	2701061	74786	-	-	-
2012-13	2592718	2639313	28191	-	-	-
2013-14	2582330	2539991	70530	-	-	-
2014-15	2459980	2505550	24960	-	-	-
2015-16	2856143	2392405	488698	-	-	-
2016-17	2808518	2895909	401307	-	-	-
2017-18	2987690	3367935	21062	-	-	-
2018-19	3181203	3133449	68816	-	-	-
2019-20	3201765	3251695	18886	-	-	-
2020-21	3268768	3132828	154826	-	-	-
2021-22	3381465	3514260	22031	-	-	-
2022-23	3280655	3190837	111849	-	-	-
2023-24	3648810	3682460	78199	-	-	-
2024-25	3730016	3313498	494737			
(Jul: - Oct:)	<u>1182909</u>	<u>1015998</u>	<u>245110</u>	=	=	=
Jul:	296039	278614	956624	-	-	-
Aug:	295790	282514	108900	-	-	-
Sep:	287823	250080	146643	-	-	-
Oct:	303257	204790	245110	-	-	-
Nov:	309811	264608	290313	-	-	-
Dec:	327454	517592	100175	-	-	-
Jan:	331403	403055	28523	-	-	-
Feb:	298097	254885	71735	-	-	-
Mar:	315869	277757	109847	-	-	-
Apr:	329967	97361	342453	-	-	-
May	333875	285585	390663	-	-	-
Jun:	300631	196657	494737	-	-	-
<u>2025-26</u>						
(Jul:- Oct:)	<u>1328911</u>	<u>1437636</u>	<u>386012</u>	=	=	=
Jul:	316200	350139	460798	-	-	-
Aug:	347453	404095	404156	-	-	-
Sep:	340477	341553	403080	-	-	-
Oct:	324781	341849	386012	-	-	-

Table No:26 DETAIL OF PRODUCTION, SALE AND STOCK OF SUPER PHOSPHATE AND AMM. NITRATE
(M. Tons)

Year (July-June)/ Month	SUPER PHOSPHATE			AMM. NITRATE		
	Production	Sale	Stock at The end	Production	Sale	Stock at the end
2008-09	89171	75025	26904	344334	339921	4421
2009-10	46952	56524	17332	345735	330963	19193
2010-11	126909	137940	6301	298029	307696	9526
2011-12	123294	90442	39153	228664	227808	10382
2012- 13	44638	42997	40794	26574	36898	58
2013-14	10081	29493	21382	119631	119539	150
2014-15	18706	25502	14586	113541	65804	47887
2015-16	28023	33404	9205	237844	169639	116092
2016-17	23815	9546	23474	226183	328008	14267
2017-18	1027	23807	694	553091	532829	34529
2018-19	18244	18828	110	456249	487629	3149
2019-20	9034	9122	22	548571	544771	6949
2020-21	31087	28244	2865	756461	762169	1241
2021-22	28780	25353	6292	821680	819768	3153
2022-23	6884	5356	7820	799008	800476	1685
2023-24	4007	10145	5	892412	889500	4597
2024-25	42	42	5	837020	837187	4430
(Jul: - Oct:)	<u>0</u>	<u>0</u>	<u>5</u>	<u>290667</u>	<u>295721</u>	<u>2543</u>
Jul:	0	0	5	72885	68925	8557
Aug:	0	0	5	71557	69056	11058
Sep:	0	0	5	74438	83440	2056
Oct:	0	0	5	74787	74300	2543
Nov:	42	42	5	69572	69085	3030
Dec:	0	0	5	63844	62444	4430
Jan:	0	0	5	62600	62600	4430
Feb:	0	0	5	65667	65667	4430
Mar:	0	0	5	71000	71000	4430
Apr:	0	0	5	70500	70500	4430
May	0	0	5	69068	69068	4430
Jun:	0	0	5	71102	71102	4430
<u>2025- 26</u>						
(Jul: - Oct:)	<u>0</u>	<u>0</u>	<u>5</u>	<u>306345</u>	<u>297445</u>	<u>13330</u>
Jul:	0	0	5	77189	71147	10472
Aug:	0	0	5	76843	74824	12491
Sep:	0	0	5	77609	75590	14510
Oct:	0	0	5	74704	75884	13330

Table No: 27 DETAIL OF PRODUCTION, SALE AND STOCK OF NITRO PHOSPHATE.

(M.Tons)

Year (July-June)/ Month	Production	Sale	Stock at the end
2008-09	305678	362938	4771
2009-10	304444	286441	22774
2010-11	265490	287894	370
2011-12	198799	198818	351
2012- 13	22109	22460	0
2013-14	122494	122478	16
2014-15	101171	93467	7720
2015-16	221059	228779	0
2016-17	274512	269570	4942
2017-18	455002	459944	0
2018-19	449667	449667	0
2019-20	624396	615632	8764
2020-21	845493	846511	7746
2021-22	835140	832990	9896
2022-23	770063	778152	1807
2023-24	814083	830751	5139
2024-25	776220	773170	8189
(Jul: - Oct:)	<u>272803</u>	<u>274450</u>	<u>3492</u>
Jul:	66806	61351	10594
Aug:	64206	60751	14049
Sep:	71847	82224	3672
Oct:	69944	70124	3492
Nov:	60922	59456	4958
Dec:	55305	54840	5423
Jan:	57267	55684	7006
Feb:	58888	57305	8589
Mar:	69000	69100	8489
Apr:	67431	67531	8389
May:	65778	65878	8289
June:	68826	68926	8189
<u>2025 - 26</u>			
(Jul: - Oct:)	<u>299084</u>	<u>299089</u>	<u>8234</u>
Jul:	75070	67189	16120
Aug:	75441	78434	13127
Sep:	73740	76733	10134
Oct:	74833	76733	8234

Table No: 28 EMPLOYMENT AND WAGES/SALARIES OF FERTILIZER INDUSTRY*

Year (July-June) / Month	No. Of Working Units	E M P L O Y M E N T (Nos.)*			WAGES/SALARIES (000 Rs.)	
		Total	Production Workers	Office Staff	Total	Production Workers
2008-09	5	4710	3316	1394	209439	132521
2009-10	5	4878	3388	1490	273098	166113
2010-11	6	5161	3496	1665	310502	181462
2011-12	6	5407	3671	1736	353344	207054
2012-13	6	5136	3469	1667	363237	210167
2013-14	6	4720	3121	1599	395486	224472
2014-15	6	5090	3015	2075	433858	222449
2015-16	6	5473	3070	2403	489752	235912
2016-17	6	5260	3045	2215	494139	260682
2017-18	7	6020	3616	2404	545307	287497
2018-19	7	6141	3663	2478	573893	295543
2019-20	7	5714	3443	2270	600079	321309
2020-21	7	5700	3590	2110	638195	355515
2021-22	7	5567	3647	1920	743477	417103
2022-23	7	5475	3516	1959	938617	494865
2023-24	7	5469	3448	2021	1315012	620419
2024-25	7	5528	3485	2043	1162827	625134
(Jul: - Oct:)	<u>7</u>	<u>5522</u>	<u>3482</u>	<u>2040</u>	<u>1066600</u>	<u>543809</u>
Jul:	7	5520	3481	2039	1065669	542970
Aug:	7	5522	3484	2038	1066007	543100
Sep:	7	5520	3481	2039	1067100	544200
Oct:	7	5525	3482	2043	1067623	544967
Nov:	7	5527	3481	2046	1203000	650019
Dec:	7	5526	3481	2045	1209446	652166
Jan:	7	5528	3482	2046	1210096	670200
Feb:	7	5527	3481	2046	1212000	670400
Mar:	7	5523	3489	2034	1212999	670700
Apr:	7	5540	3492	2031	1214000	671200
May	7	5542	3493	2049	1214995	671700
Jun:	7	5540	3496	2044	1211000	670000
<u>2025 - 26</u>						
(Jul: - Oct:)	<u>7</u>	<u>5543</u>	<u>3493</u>	<u>2050</u>	<u>1210513</u>	<u>66890</u>
Jul:	7	5541	3491	2050	1211000	67000
Aug:	7	5543	3494	2049	1210050	66960
Sep:	7	5541	3491	2050	1210000	66700
Oct:	7	5545	3495	2050	1211000	66900

* = Monthly averages over the four months.

PERFORMANCE OF FOOTWEAR INDUSTRY

Report for the month of October 2025

Coverage

This report covers Forty One (41) factories of Footwear Industry in the Punjab Province.

Production

The factories produced 3135 thousand Pairs of Footwear during the current month, which was 0.1% higher than the previous month.

Employment

Total employment in these factories during the current month was 12777, which was same as the previous month. Out of this total employment, 9333 were production workers.

PRODUCTIN OF FOOTWEAR

July 2024 to October 2025

(000 Pairs)

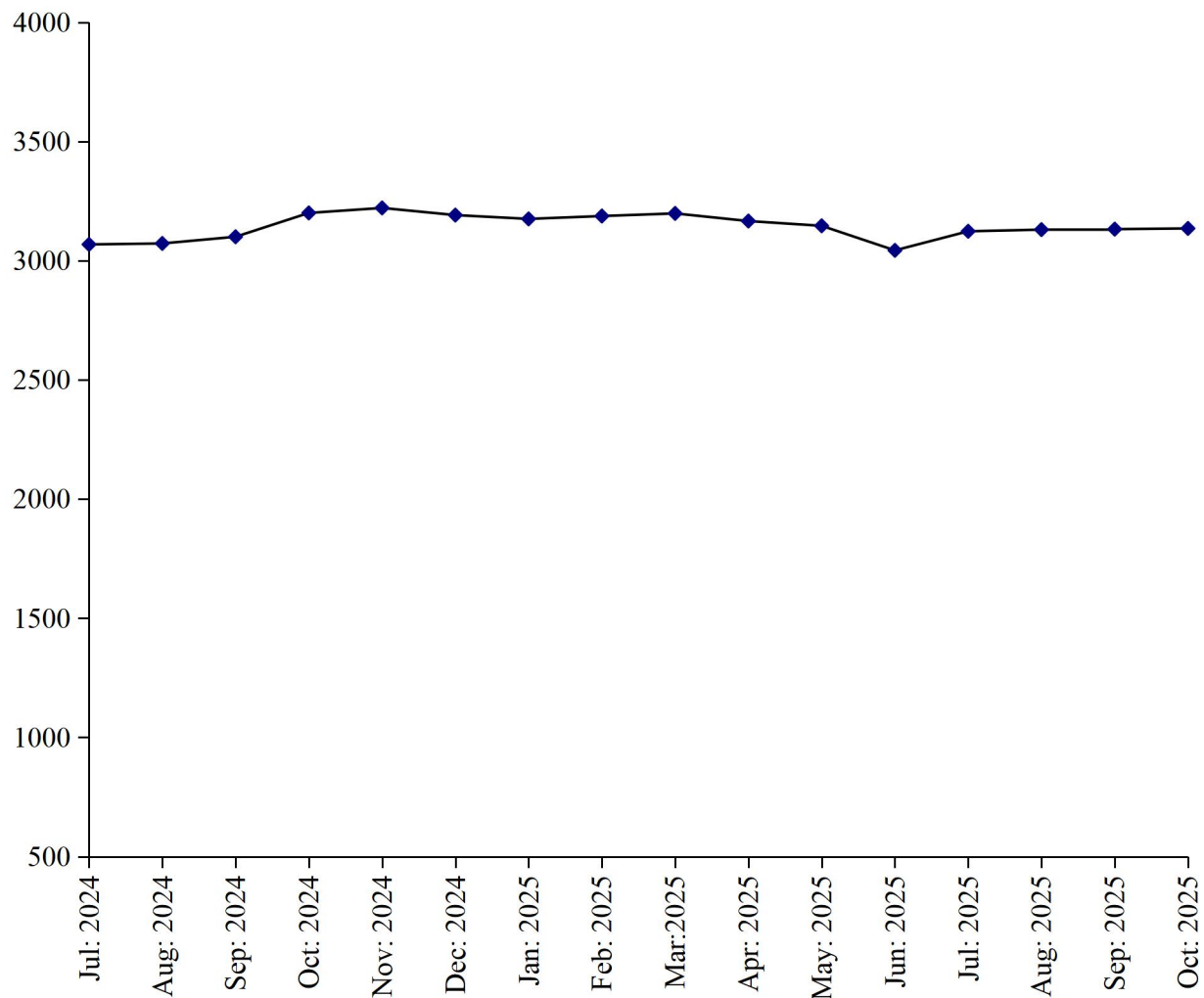


Table No.29 MANUFACTURING ACTIVITY OF FOOTWEAR INDUSTRY

Year (July-June)/ Month	No. Of Reporting Units	Production Of Footwear (000) Pairs)	EMPLOYMENT (NOS.) *	
			Total	Production Workers
2008-09	16	30979	8521	7038
2009-10	16	34817	8667	7152
2010-11	40	41008	9699	8116
2011-12	40	41944	9719	8535
2012-13	40	43232	9997	8536
2013-14	40	45030	9967	7937
2014-15	40	55136	9523	7398
2015-16	40	60462	10350	7959
2016-17	41	45476	9778	7401
2017-18	41	37411	9758	7477
2018-19	41	38805	9844	7783
2019-20	41	37860	10346	8451
2020-21	41	25658	10158	7745
2021-22	41	29843	11939	9145
2022-23	41	32298	12422	9367
2023-24	41	35200	12648	9357
2024-25	41	37847	12800	9349
(Jul: - Oct:)	<u>41</u>	<u>12440</u>	<u>12808</u>	<u>9353</u>
Jul:	41	3068	12775	9320
Aug:	41	3072	12816	9362
Sep:	41	3100	12818	9364
Oct:	41	3200	12821	9366
Nov:	41	3221	12826	9368
Dec:	41	3191	12813	9362
Jan:	41	3175	12803	9352
Feb:	41	3187	12803	9352
Mar:	41	3198	12803	9352
Apr:	41	3166	12780	9335
May	41	3146	12772	9328
June	41	3111	12768	9324
<u>2025-26</u>				
(Jul: - Oct:)	<u>41</u>	<u>10720</u>	<u>12774</u>	<u>9330</u>
Jul:	41	3123	12772	9328
Aug:	41	3130	12772	9328
Sep:	41	3132	12776	9332
Oct:	41	1335	12777	9333

* = *Monthly Average over the four months.*

PERFORMANCE OF LEATHER TANNING INDUSTRY

Report for the month of October 2025

Coverage

The report for the month covers one Hundred and Six (106) Tanneries working in the Punjab Province.

Production

These Tanneries produced 679 thousand Sq. Mtrs. of Upper Leather and 16 M. Tons of Sole Leather during the current month. The Production of Upper Leather during the month was 0.7% lower than the previous month.

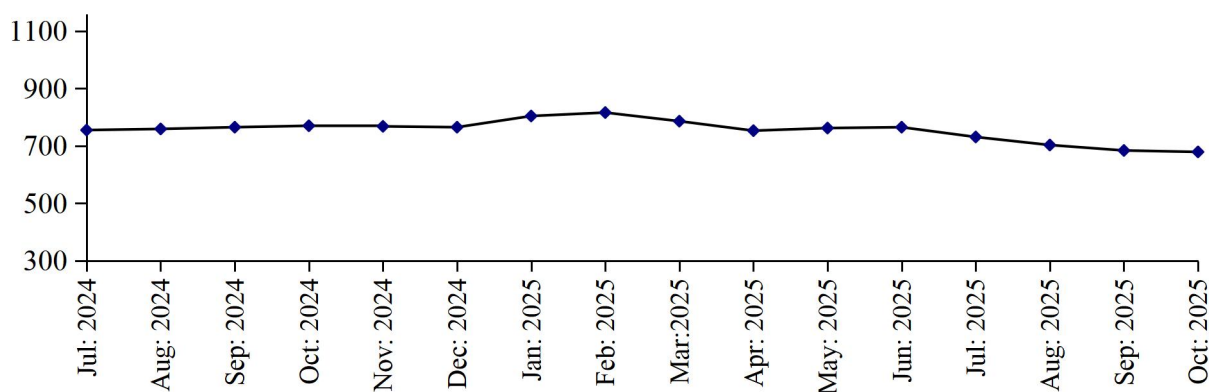
Employment

Total employment in these factories was 2262 persons which was 0.7% lower than the last month. Out of this total employment 1549 persons were production workers.

PRODUCTION OF UPPER LEATHER

July 2024 to October 2025

(000 Sq. Mtrs)



PRODUCTION OF SOLE LEATHER

July 2024 to October 2025

(000 M. Tons)

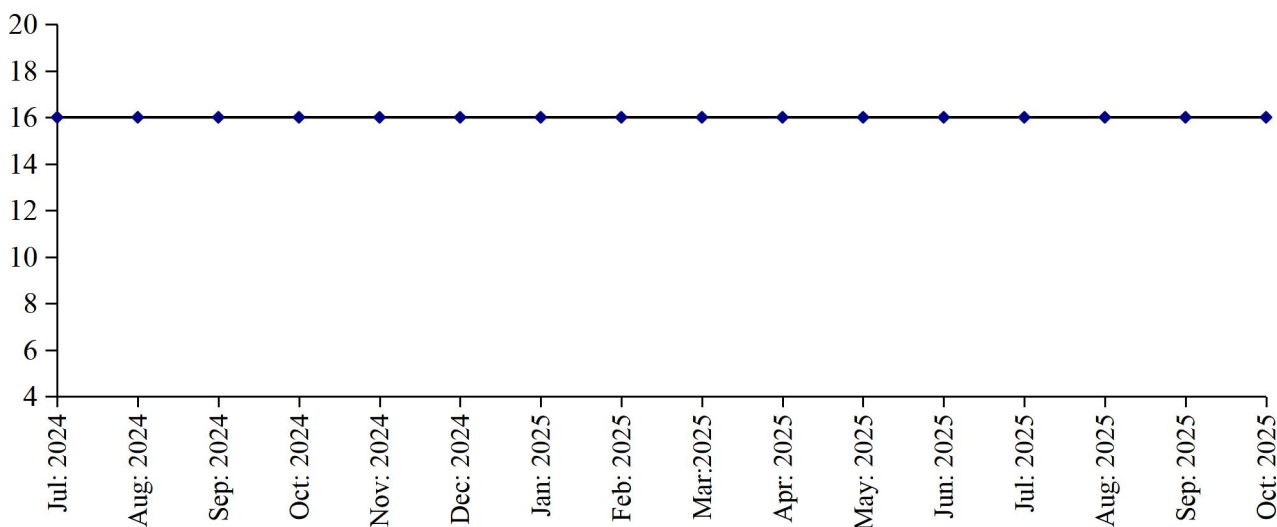


Table No: 30: MANUFACTURING ACTIVITY OF LEATHER TANNING INDUSTRY

Year (July-June) / Month	No. Of Reporting Units	P R O D U C T I O N		EMPLOYMENT (NOS.) *	
		Upper Leather (000 Sq. Mtrs)	Sole Leather (M. Tons)	Total	Production Workers
2008-09	19	5980	156	1195	910
2009-10	60	10465	215	1711	1325
2010-11	100	12999	381	2234	1813
2011-12	100	11154	417	2133	1709
2012-13	100	10169	356	1824	1318
2013-14	100	10766	287	2404	1703
2014-15	100	10071	241	2539	1821
2015-16	100	9563	198	2550	1935
2016-17	106	10330	156	2956	2174
2017-18	107	11150	168	3071	2248
2018-19	107	11045	168	2938	2135
2019-20	108	9340	168	2787	2006
2020-21	108	7956	168	2467	1755
2021-22	106	8852	176	2261	1591
2022-23	106	9622	192	2245	1612
2023-24	106	9229	195	2315	1640
2024-25	106	9268	192	2307	1652
(Jul: - Oct:)	<u>106</u>	<u>3049</u>	<u>64</u>	<u>2335</u>	<u>1686</u>
Jul:	106	755	16	2328	1675
Aug:	106	759	16	2330	1687
Sept:	106	765	16	2340	1690
Oct:	106	770	16	2342	1692
Nov:	106	768	16	2340	1690
Dec:	106	765	16	2344	1694
Jan:	106	804	16	2305	1657
Feb:	106	816	16	2330	1676
Mar:	106	786	16	2330	1676
Apr:	106	753	16	2229	1564
May	106	762	16	2231	1566
Jun:	106	765	16	2231	1556
<u>2025-26</u>					
(Jul: - Oct:)	<u>106</u>	<u>2797</u>	<u>64</u>	<u>2274</u>	<u>1581</u>
Jul:	106	731	16	2269	1614
Aug:	106	703	16	2287	1602
Sep:	106	684	16	2278	1558
Oct:	106	679	16	2262	1549

* = Monthly average over the four months.

PERFORMANCE OF PAPER & PAPER BOARD INDUSTRY

Report for the month of October 2025

Coverage

This report covers forty six (46) factories of Paper & Paper Board Industries in the Punjab Province.

Production

Forty six factories produced 19598 Metric Tons of paper, which comprises of 8960 Metric Tons of writing, 5067 Metric Tons of printing and 5571 Metric Tons of packing and other and 36611 Metric Tons of paper board during the month. The production of paper and paper board was 2.7% higher and 7.3% lower than the last month respectively.

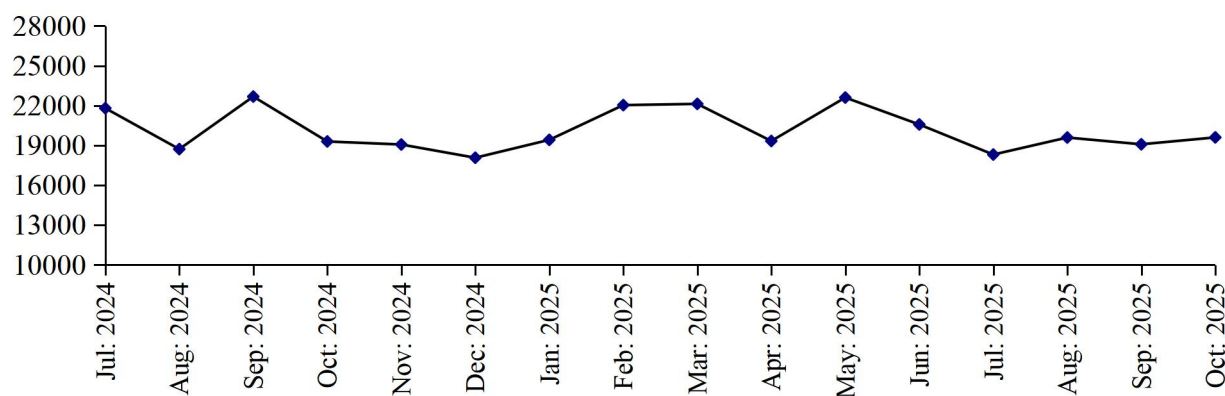
Employment

Total employment during the month was 4645 persons, which was 0.3% lower than the last month. Out of this total employment, 3382 were production workers.

PRODUCTION OF PAPER & PAPER BOARD

July 2024 to October 2025

(M. Tons)



(M. Tons)

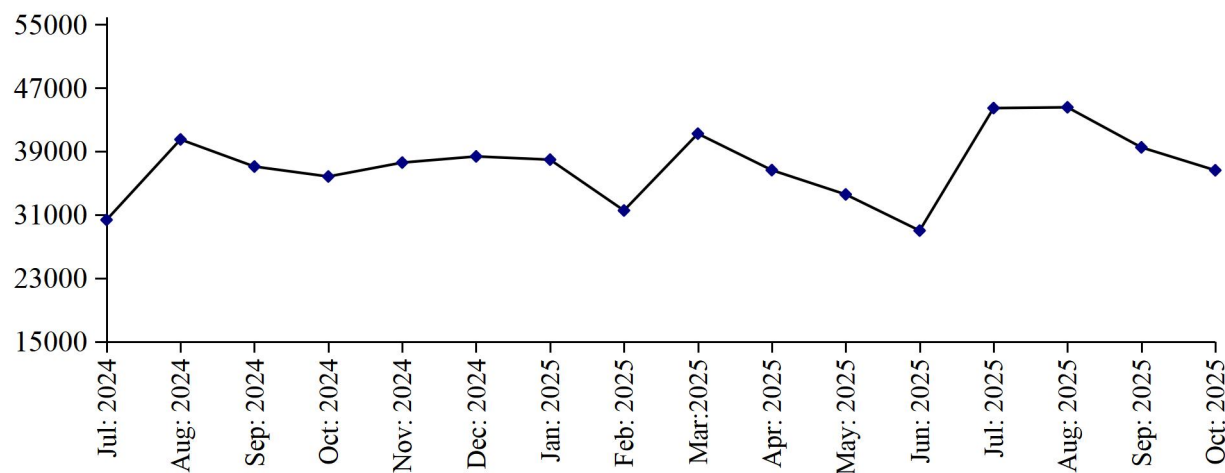


Table No: 31 MANUFACTURING ACTIVITY OF PAPER & PAPER BOARD INDUSTRY.

Year (July-June)/ Month	No. Of Reporting Units	P R O D U C T I O N (M.Tons)			EMPLOYMENT (NOS.) *	
		Paper	Paper Board	Paper & Paper Board	Total	Production Workers
2008-09	34	244838	165797	410635	5835	4845
2009-10	41	240775	165269	406044	5398	4178
2010-11	41	220587	194084	414671	5787	3945
2011-12	41	236217	287645	523862	5403	3539
2012-13	43	218980	376138	595118	5702	3774
2013-14	43	205252	457794	663046	6031	4053
2014-15	46	190193	407658	597851	6086	4370
2015-16	50	219040	370427	589467	6169	4629
2016-17	49	226251	398950	625201	6065	4614
2017-18	48	237723	451717	689440	6130	4570
2018-19	47	225544	429716	655260	5567	4052
2019-20	47	220495	441640	662135	5112	3683
2020-21	47	191962	488542	680504	5101	3660
2021-22	47	204434	526353	730787	5026	3600
2022-23	47	232450	438353	670803	5102	3653
2023-24	47	243683	420773	664456	5111	3682
2024-25	47	245683	429621	675304	4881	3513
(Jul – Oct:)	<u>47</u>	<u>82482</u>	<u>143762</u>	<u>226244</u>	<u>4947</u>	<u>3547</u>
Jul:	47	21800	30352	52152	4916	3515
Aug:	47	18715	40502	59217	4889	3489
Sep:	47	22675	37083	59758	5023	3624
Oct:	47	19292	35825	55117	4961	3560
Nov:	47	19063	37582	56645	5023	3624
Dec:	47	18065	38362	56427	4792	3393
Jan:	47	19414	37954	57368	4788	3390
Feb:	47	22032	31535	53567	4900	3501
Mar:	47	22124	41233	63357	4896	3496
Apr:	47	19328	36632	55960	4813	3534
May	47	22602	33563	56165	4799	3524
Jun:	47	20573	28998	49571	4777	3507
<u>2025-26</u>						
(Jul – Oct:)	<u>46</u>	<u>76572</u>	<u>165127</u>	<u>241699</u>	<u>4654</u>	<u>3390</u>
Jul:	46	18306	44461	62767	4666	3399
Aug:	46	19589	44551	64140	4644	3387
Sep:	46	19079	39504	58583	4661	3393
Oct:	46	19598	36611	56209	4645	3382

* = Monthly average over the four months.

PERFORMANCE OF LIGHT ENGINEERING INDUSTRY

Report for the month of October 2025

RE-ROLLED STEEL

Coverage

This report covers Forty One (41) factories of Re-Rolled Steel in the Punjab Province.

Production

Forty one factories covered under the survey produced 23388 Metric Tons of steel bars/angles during October 2025, which was 2.0% lower than the last month.

Employment

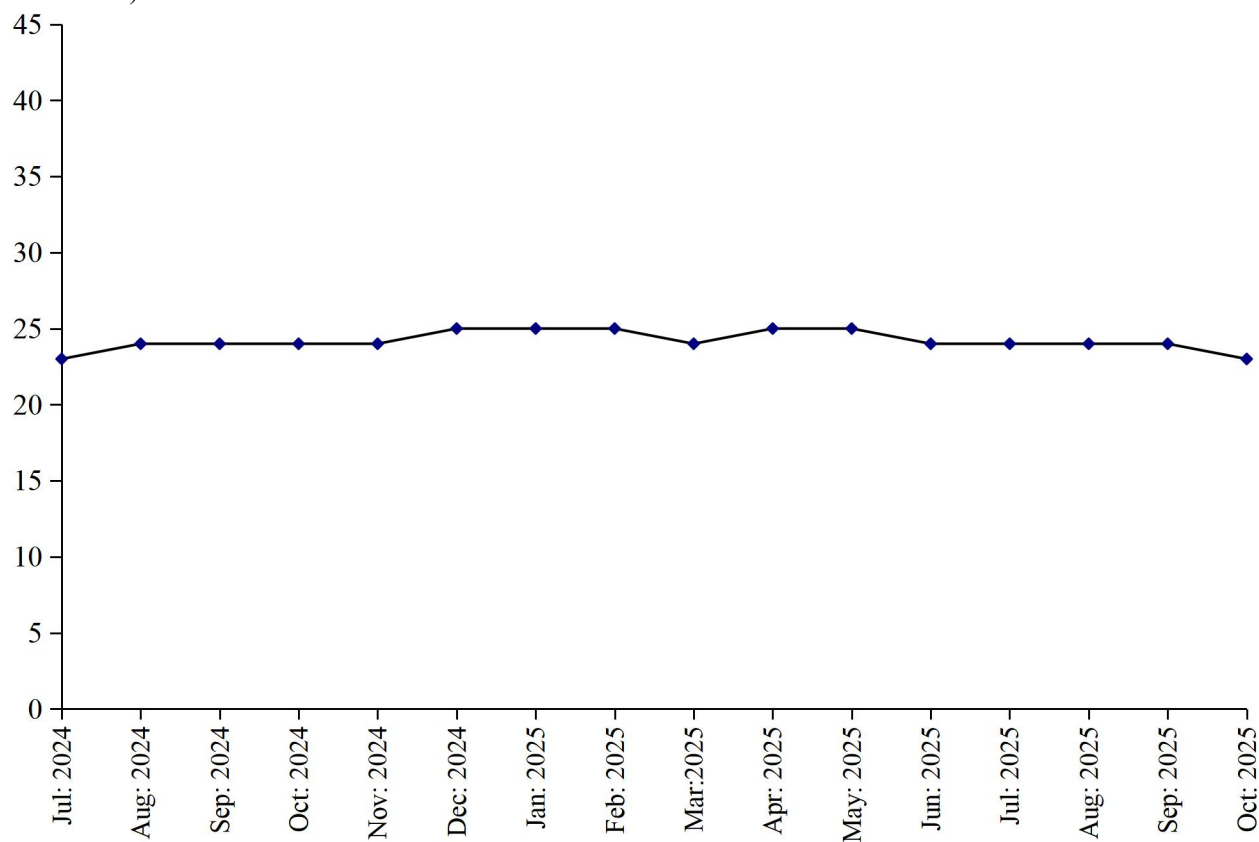
Total employment in the industry during the month was 1110, which was same as the last month.

Out of this total employment, 802 were production workers.

PRODUCTION OF RE-ROLLED STEEL

July 2024 to October 2025

(000 M. Tons)



BICYCLES

Coverage

This report covers three (3) factories of Bicycles in the Punjab.

Production

Three factories being covered in the survey manufactured and assembled 14849 complete bicycles during October 2025, which was 0.2% higher than the last month.

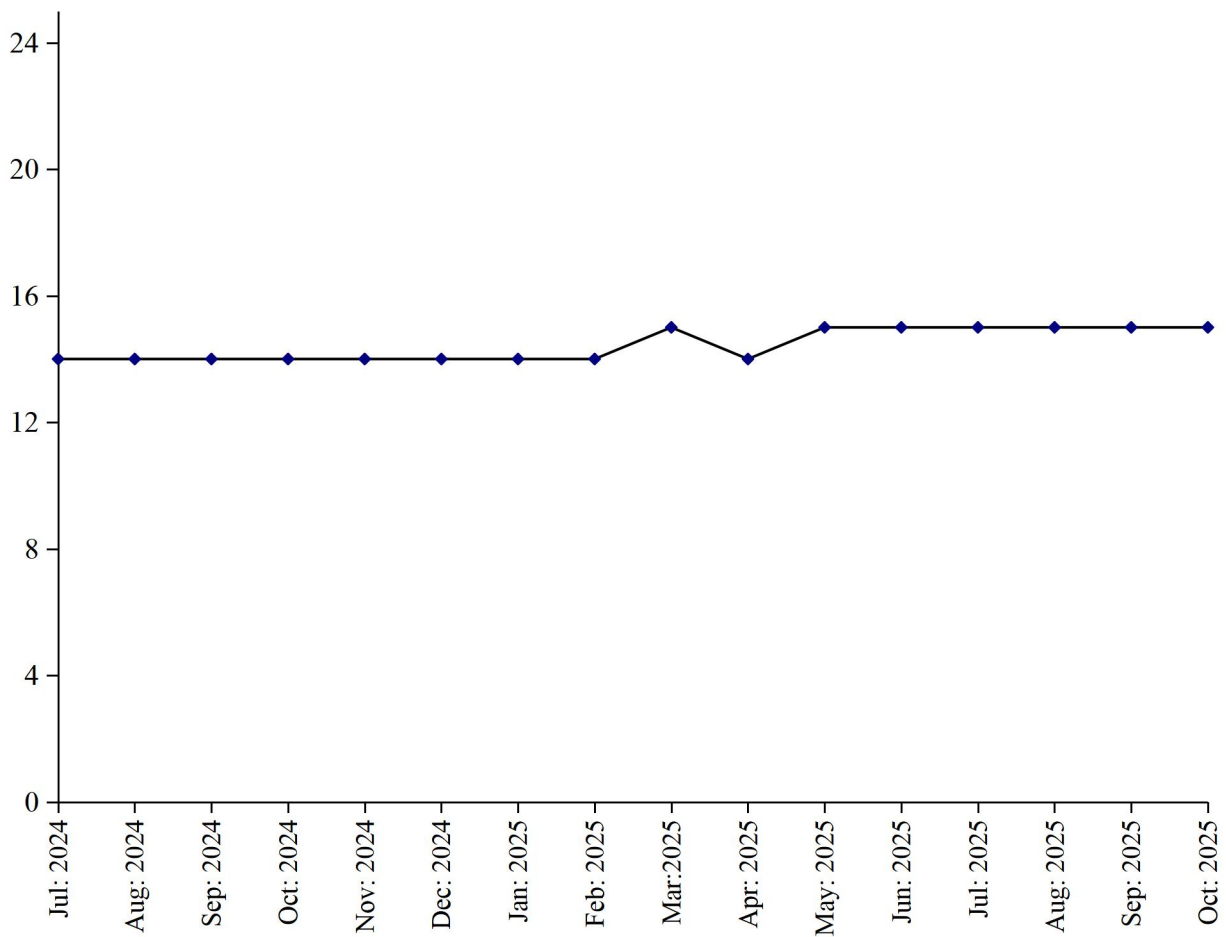
Employment

Total employment in these factories during the month was 686, which was same as the last month. Out of this total employment, 527 were production workers.

PERFORMANCE OF BICYCLES

July 2024 to October 2025

(000 M. Tons)



ELECTRIC FANS

Coverage

This report covers one hundred and twenty six (126) factories of Electric Fans in the Punjab Province.

Production

One hundred and twenty six factories covered under the survey manufactured 207166 (ceiling fans, 144561 pedestal fans, 34790 and other fans 27815) during October, 2025, which was 7.7% lower than the last month.

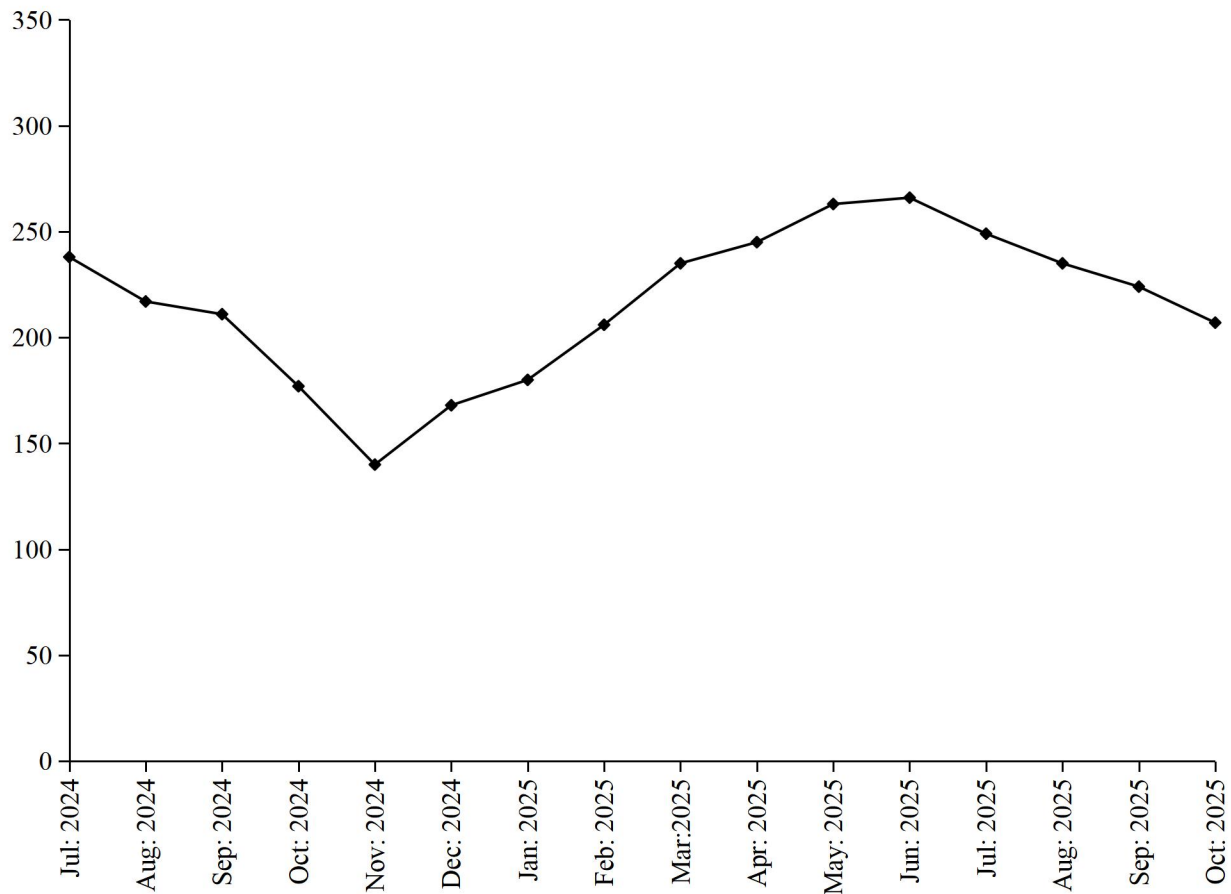
Employment

These factories reported 2255 total employment during the month, which was 0.2% lower than the last month. Out of this total employment, 1810 were production workers.

PERFORMANCE OF ELECTRIC FANS

July 2024 to October 2025

(000 Nos.)



ELECTRIC MOTORS

Coverage

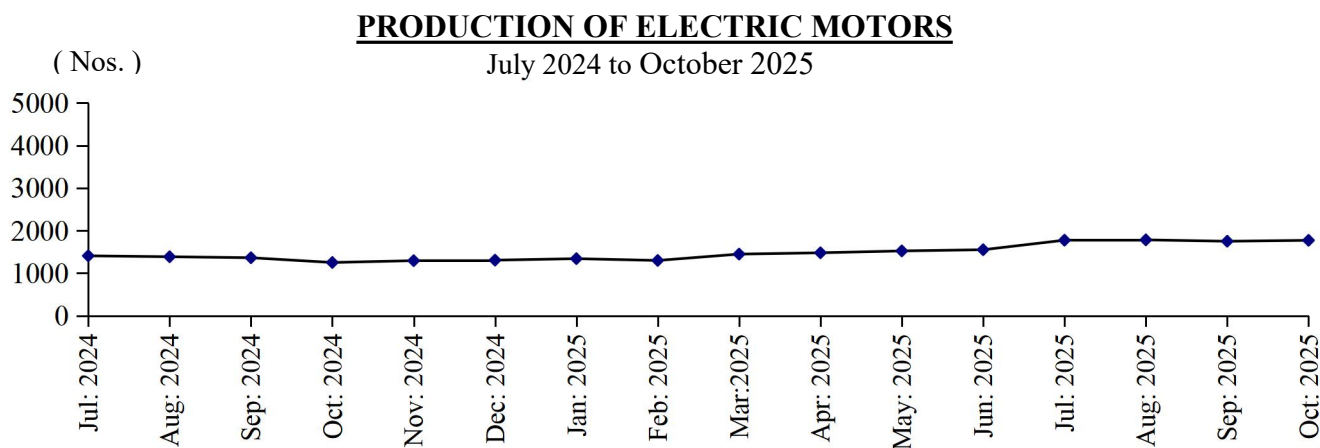
This report covers thirty (30) factories of Electric Motors in the Punjab Province.

Production

Thirty factories covered under the survey manufactured 1773 electric motors during the month, which was 1.3% higher than the last month.

Employment

Total Employment in these factories during the month which was 171, which was same as the last month. Out of this total employment, 143 were production workers.



DIESEL ENGINES

Coverage

This report covers fifteen (15) factories of Diesel Engines in the Punjab Province.

Production

These fifteen factories covered under the survey and 126 complete diesel engines manufactured during the month, which was 1.8% higher than the last month.

Employment

Total employment in these factories during the month was 23, which is same as it was in previous month. Out of this total employment, 16 were production workers.

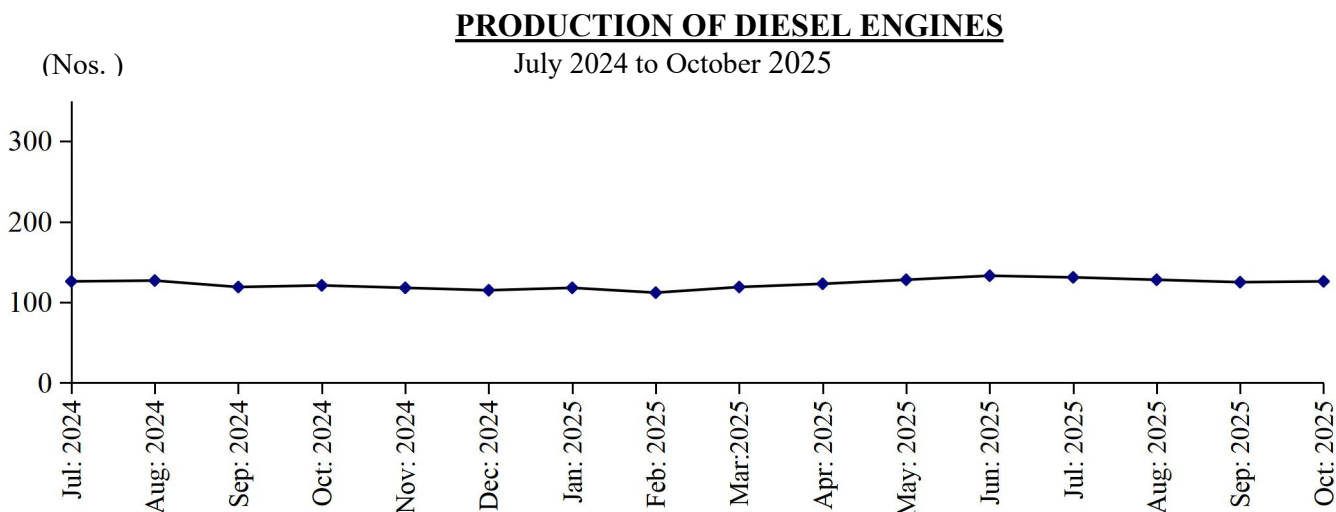


Table No: 32 MANUFACTURING ACTIVITY OF LIGHT ENGINEERING INDUSTRY

Year (July – June) / Month	Re-rolled Steel Bars / Angles (M. Tons)	Bicycles (Nos.)	Electric Fans (Nos.)	Electric Motors (Nos.)	Diesel Engines (N0s.)
2008-09	343506	419897	1697140	6604	16906
2009-10	321369	447207	2128884	7068	20157
2010-11	312433	345272	1940346	7667	10285
2011-12	289874	262096	1858883	5857	2861
2012-13	266669	232979	1909412	5752	2219
2013-14	257569	206459	1870475	9906	2117
2014-15	264406	210931	1870291	9013	2045
2015-16	320769	198966	1970506	7319	495
2016-17	367619	200218	2461369	9206	1554
2017-18	485131	202168	2498919	41793	1120
2018-19	382890	173545	2508085	56819	908
2019-20	289350	141125	2124301	39312	1294
2020-21	312922	79310	2498634	30054	1644
2021-22	308749	141236	2589903	22832	1941
2022-23	292280	146454	2181562	18756	2127
2023-24	269320	159033	2283408	16539	1553
2024-25	290194	170223	2545758	16661	1459
(Jul: – Oct:)	<u>94206</u>	<u>55478</u>	<u>843438</u>	<u>5412</u>	<u>493</u>
Jul:	23362	13817	238113	1409	126
Aug:	23625	13831	217357	1387	127
Sep:	23503	13885	210869	1364	119
Oct:	23716	13945	177099	1252	121
Nov:	23981	13988	139638	1295	118
Dec:	24781	14024	167745	1307	115
Jan:	24928	14110	180281	1342	118
Feb:	24509	14348	205891	1300	112
Mar:	24251	14571	235353	1449	119
Apr:	24701	14485	244826	1480	123
May	24613	14599	262879	1524	128
Jun:	24224	14620	265707	1552	133
<u>2025-26</u>					
(Jul: – Oct:)	<u>94516</u>	<u>59031</u>	<u>915469</u>	<u>7084</u>	<u>510</u>
Jul:	23662	14664	248601	1776	131
Aug:	23615	14699	235342	1784	128
Sep:	23851	14819	224360	1751	125
Oct:	23388	14849	207166	1773	126

Table No: 33 TOTAL EMPLOYMENT (Nos.) OF LIGHT ENGINEERING INDUSTRY*

Year (July – June)/ Month	Re-rolled Steel Bars / Angles (M.Tons)	Bicycles (Nos.)	Electric Fans (Nos.)	Electric Motors (Nos.)	Diesel Engines (N0s.)
2008-09	1103	2257	1894	69	200
2009-10	1134	2124	2124	63	223
2010-11	1218	2009	2120	64	191
2011-12	1193	1612	2351	64	155
2012-13	1188	1318	2172	58	147
2013-14	1269	1214	2307	64	154
2014-15	1299	1060	2208	63	154
2015-16	1317	907	2090	65	150
2016-17	1372	885	2325	121	146
2017-18	1310	883	2549	130	133
2018-19	1304	759	2673	158	52
2019-20	1013	751	1817	191	22
2020-21	1067	686	2141	197	20
2021-22	1077	686	2229	213	21
2022-23	1091	686	2092	174	24
2023-24	1086	686	2159	162	24
2024-25	1111	686	2247	163	23
(Jul: - Oct:)	<u>1106</u>	<u>686</u>	<u>2219</u>	<u>163</u>	<u>23</u>
Jul:	1102	686	2236	165	23
Aug:	1105	686	2219	163	23
Sep:	1107	686	2214	162	23
Oct:	1109	686	2205	161	23
Nov:	1113	686	2202	160	23
Dec:	1113	686	2230	160	23
Jan:	1115	686	2236	161	23
Feb:	1114	686	2240	161	23
Mar:	1111	686	2290	164	23
Apr:	1112	686	2295	165	23
May	1113	686	2298	166	23
Jun:	1114	686	2298	166	23
<u>2025-26</u>					
(Jul: - Oct:)	<u>1110</u>	<u>686</u>	<u>2363</u>	<u>170</u>	<u>23</u>
Jul:	1110	686	2070	170	23
Aug:	1108	686	2265	170	23
Sep:	1110	686	2260	170	23
Oct:	1110	686	2255	171	23

* = Monthly averages over the four months.

Table No: 34 PRODUCTION WORKERS (Nos.) OF LIGHT ENGINEERING INDUSTRY *

Year (July – June)/ Month	Re-rolled Steel Bars / Angles (M.Tons)	Bicycles (Nos.)	Electric Fans (Nos.)	Electric Motors (Nos.)	Diesel Engines (N0s.)
2008-09	757	1905	1542	60	160
2009-10	782	1892	1748	57	154
2010-11	870	1843	1709	57	126
2011-12	857	1540	1904	57	99
2012-13	843	1289	1761	50	95
2013-14	905	1161	1850	55	99
2014-15	920	992	1745	54	100
2015-16	934	836	1658	56	97
2016-17	976	820	1865	113	93
2017-18	926	804	1994	119	86
2018-19	916	696	2066	122	34
2019-20	706	679	1425	147	15
2020-21	780	527	1735	151	14
2021-22	786	527	1815	157	16
2022-23	798	527	1823	145	16
2023-24	782	527	1737	135	16
2024-25	783	527	1801	135	16
(Jul: - Oct:)	<u>798</u>	<u>527</u>	<u>1780</u>	<u>135</u>	<u>16</u>
Jul:	795	527	1795	137	16
Aug:	798	527	1779	135	16
Sep:	799	527	1776	134	16
Oct:	801	527	1769	133	16
Nov:	806	527	1760	131	16
Dec:	806	527	1790	131	16
Jan:	809	527	1796	132	16
Feb:	810	527	1800	132	16
Mar:	803	527	1822	134	16
Apr:	804	527	1840	135	16
May	805	527	1842	136	16
Jun:	806	527	1850	136	16
<u>2025-26</u>					
(Jul: - Oct:)	<u>802</u>	<u>527</u>	<u>1822</u>	<u>142</u>	<u>16</u>
Jul:	802	527	1832	140	16
Aug:	800	527	1825	142	16
Sep:	802	527	1820	142	16
Oct:	802	527	1810	143	16

* = Monthly averages over the four months.

PERFORMANCE OF PHARMACEUTICAL INDUSTRY

Report for the month of October 2025

Coverage

This report covers thirty six (36) Pharmaceutical Industries in the Punjab Province.

Production

Overall production of these 36 pharmaceutical factories during the month was 0.2% and 1.4% lower than October, 2025 and October 2024 respectively.

These factories produced 294961 thousand Nos. of Tablets, 1826 thousand Ltrs., of Liquids/Syrups, 65209 thousand Nos. of Capsules, 11619 thousand Nos. of Injections, 52076 kgs. of Ointments and 5 thousand Ltrs. of Galanicals (Tincture/Spirits). The production of Capsules and Ointments was 7.4%, 13.1%, higher whereas the production of Tablets, Liquid, Injections, and Galanicals was 3.4%, 1.2%, 7.6% and 0.0% lower than the last month respectively.

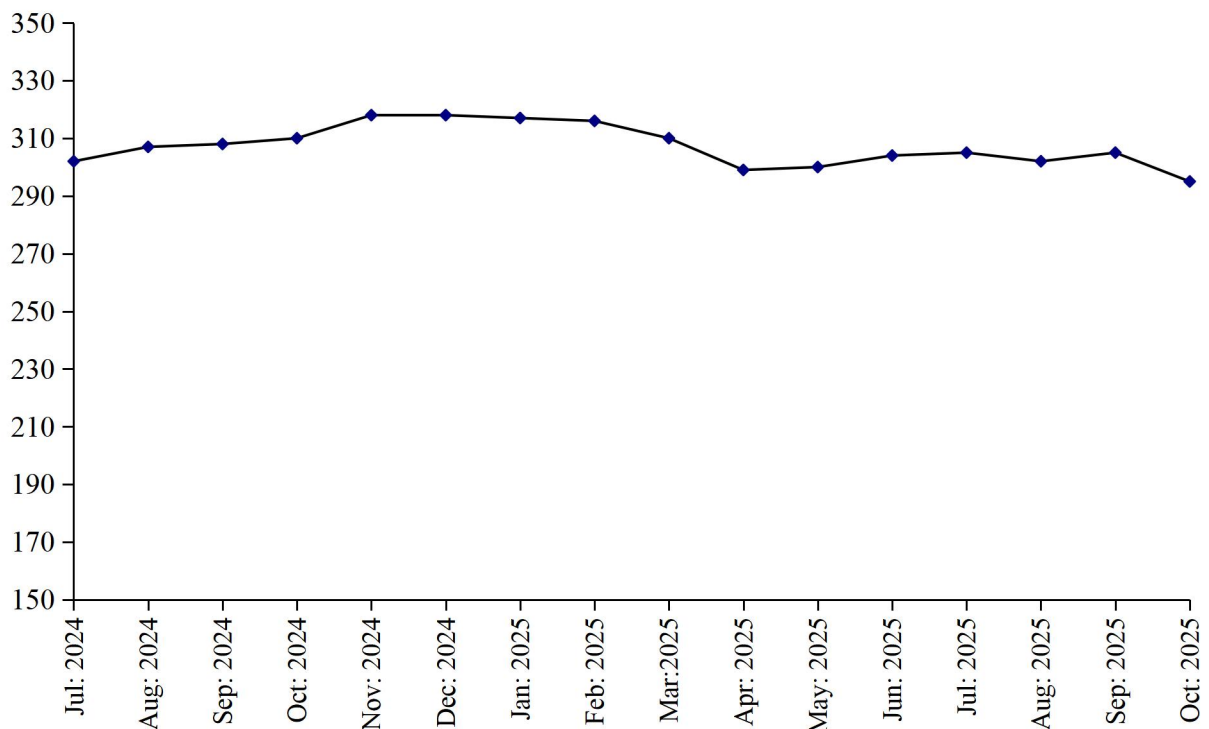
Employment

Total employment in these factories during the month was 8104 which was same as the last month. Out of this total employment 3315 were production workers. Total wages/salaries during the month were 305.4 million rupees.

(000 Nos.)

PRODUCTION OF TABLETS

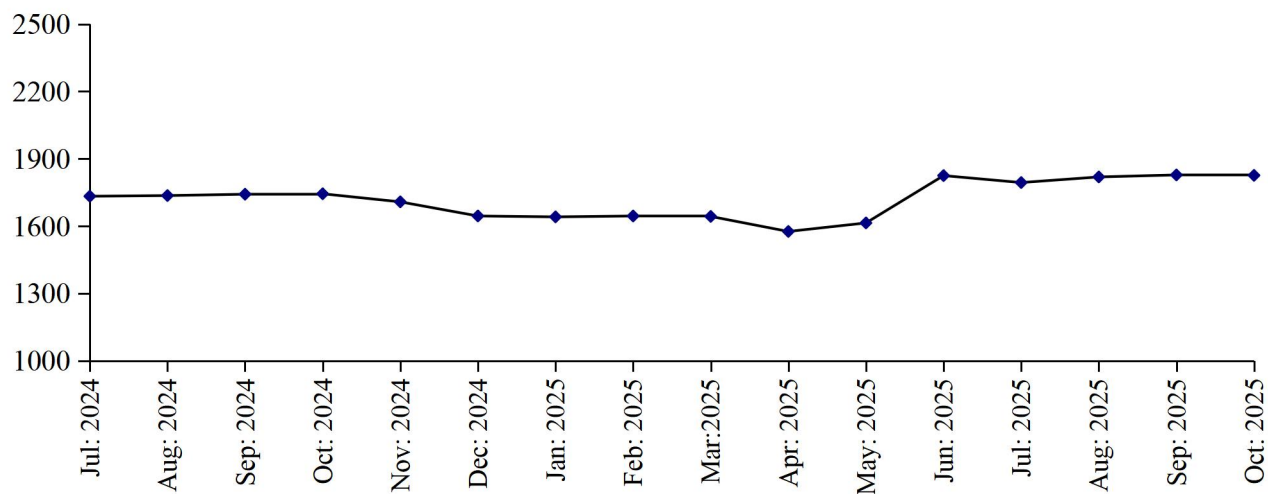
July 2024 to October 2025



(000 Nos.)

PRODUCTION OF LIQUIDS

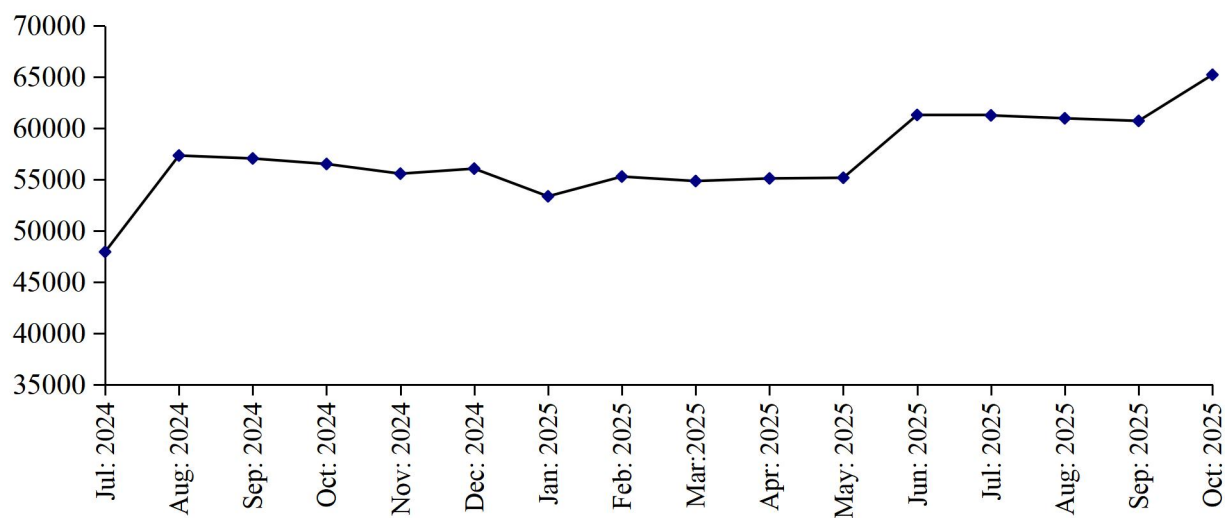
July 2024 to October 2025



(000 Nos.)

PRODUCTION OF CAPSULES

July 2024 to October 2025



(000 Nos.)

PRODUCTION OF INJECTIONS

July 2024 to October 2025

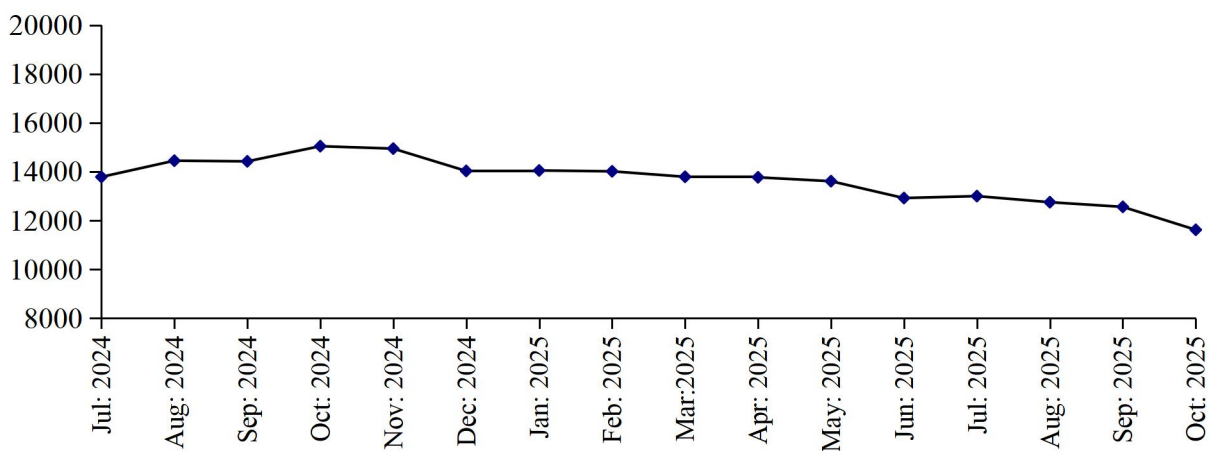


Table 35:MANUFACTURING ACTIVITY OF PHARNMACEUTICAL INDUSTRY

Year (July – June) / Month	No. Of Reporting Factories	P R O D U C T I O N					
		Tablets (000 Nos.)	Liquids/ Syrups (000Ltrs.)	Capsules (000 Nos.)	Injections (000 Nos.)	Ointments (Kgs.)	Galanicals Tinctures/ Spirits (000 Ltrs.)
2008-09	40	2286638	21267	121093	89615	105595	73
2009-10	40	2373104	23222	134594	99608	189148	62
2010-11	41	2486495	25211	165294	109708	187430	50
2011-12	41	2487861	25546	224249	132544	209841	41
2012-13	40	2873661	35457	339450	119598	196597	34
2013-14	36	2639613	16264	261919	137051	238299	185
2014-15	36	2593592	18838	310520	140827	229778	75
2015-16	36	2823449	21636	339151	133352	242367	46
2016-17	36	2530717	24085	295120	194717	732361	343
2017-18	35	2893883	15602	371962	149607	570468	121
2018-19	36	2826410	14207	420278	144788	567249	39
2019-20	36	2847315	14011	447276	119438	640721	74
2020-21	36	3096704	17504	481498	110866	595075	69
2021-22	36	3249998	15091	501673	180141	518897	54
2022-23	36	3195113	19346	513243	187290	647041	36
2023-24	36	3546637	22107	563550	175372	616735	27
2024-25	36	3708397	20252	665481	168839	595551	36
(Jul: - Oct:)	<u>36</u>	<u>1226863</u>	<u>6955</u>	<u>218823</u>	<u>57711</u>	<u>193008</u>	<u>8</u>
Jul:	36	301913	1733	47933	13786	48251	2
Aug:	36	307097	1736	57333	14451	48507	2
Sep:	36	307739	1742	57048	14424	47999	2
Oct:	36	310114	1744	56509	15045	48251	2
Nov:	36	317633	1708	55564	14946	51781	2
Dec:	36	317950	1645	56056	14031	47051	4
Jan:	36	316845	1641	53355	14050	47693	4
Feb:	36	316088	1645	55281	14015	47891	4
Mar:	36	310221	1643	54846	13791	48491	3
Apr:	36	298584	1576	55101	13769	53226	3
May	36	299728	1614	55164	13611	53200	3
Jun:	36	304485	1825	61291	12920	53210	5
<u>2025-26</u>							
(Jul: - Oct:)	<u>36</u>	<u>1207176</u>	<u>7267</u>	<u>248136</u>	<u>49928</u>	<u>202224</u>	<u>25</u>
Jul:	36	304894	1794	61249	13000	51833	6
Aug:	36	301960	1819	60964	12750	52285	7
Sep:	36	305361	1828	60714	12559	46030	7
Oct:	36	294961	1826	65209	11619	52076	5

Table 36: EMPLOYMENT AND WAGES / SALARIES OF PHARMACEUTICAL INDUSTRY

Year (July – June) / Month	No. Of Reporting Factories	E M P L O Y M E N T (Nos.)			WAGES /SALARIES (000 Rs.)	
		Total	Production Workers	Office Staff	Total	Production Workers
2008-09	40	5737	3115	2622	75446	35208
2009-10	40	5967	3294	2673	84295	41482
2010-11	41	7468	3475	3993	109964	38722
2011-12	41	7802	3518	4284	122250	38078
2012-13	40	7619	3397	4222	128323	37873
2013-14	36	7255	3043	4212	141281	37844
2014-15	36	7271	3136	4135	149144	37763
2015-16	36	6887	2887	4000	142875	38347
2016-17	36	7069	3338	3731	166039	42770
2017-18	35	7190	3095	4095	180431	46461
2018-19	36	7287	3080	4207	186677	48238
2019-20	36	7926	3244	4682	215121	53959
2020-21	36	7726	3388	4338	241910	59134
2021-22	36	8092	3318	4774	263957	61029
2022-23	36	8048	3290	4758	277034	64865
2023-24	36	8060	3294	4765	303965	73620
2024-25	36	8099	3315	4784	304733	77700
(Jul: - Oct:)	<u>36</u>	<u>8092</u>	<u>3311</u>	<u>4781</u>	<u>303664</u>	<u>73928</u>
Jul:	36	8086	3307	4779	302969	73706
Aug:	36	8090	3310	4780	304568	74000
Sep:	36	8095	3313	4782	304210	74006
Oct:	36	8097	3314	4783	302909	74000
Nov:	36	8098	3315	4783	304316	74105
Dec:	36	8100	3318	4782	304616	74302
Jan:	36	8102	3320	4782	305119	74932
Feb:	36	8100	3318	4782	305600	74999
Mar:	36	8103	3315	4788	305400	74898
Apr:	36	8104	3316	4788	305800	75001
May	36	8105	3315	4788	305700	75002
Jun:	36	8106	3317	4786	305600	74900
<u>2025-26</u>						
(Jul:-Oct:)	<u>36</u>	<u>8102</u>	<u>3313</u>	<u>4789</u>	<u>305333</u>	<u>75027</u>
Jul:	36	8100	3312	4788	305400	75001
Aug:	36	8100	3311	4789	305312	75002
Sep:	36	8102	3312	4788	305221	75045
Oct:	36	8104	3315	4789	305399	75060

* = Monthly average over the four months.

**LIST OF IMPORTANT TELEPHONES
BUREAU OF STATISTICS, PUNJAB AND ITS FIELD OFFICES**

NAME OF OFFICERS	DESIGNATION	OFFICE TELEPHONE
Muhammad Ali Ammer	Director General	042-99232901
Muhammad Mumtaz Ahmad	Director	042-99232904
Kashif Farooq	Deputy Director (CIS)	042-99232907
Sana Ashraf	Assistant Director (CIS)	-do-
Muhammad Kashif	Statistical Officer (CIS)	-do-
Zia Ahmad Babar	Statistical Officer (CIS)	-do-
Muhammad Haris	Statistical Officer (CIS)	-do-
Inamullah	Statistical Officer (CIS)	-do-
DESIGNATION	BUREAU'S FIELD OFFICES/ADDRESS	
Deputy Director	Tosha Khana Near Cholistan Development Authority, Bahawalpur	062-9250193
Deputy Director	House No. 70-A, Khyaban-e-Sarwar, Dera Ghazi Khan	064-9330108
Deputy Director	2nd Floor Azam Plaza, Near Passport Office, Bukhari Road, Gujranwala	055-9200419
Deputy Director	P-45, Main Road, Al Faiz Colony, Satiana Road Faisalabad	041-9330531
Deputy Director	Near Circuit House, Multan	061-9200930
Deputy Director	Abad Complex Murree Road, Rawalpindi	051-9292035
Deputy Director	52 Umar Park, Sargodha	048-3765387
Deputy Director	34-H Shadman Town, Sahiwal	0404-4507560
Assistant Director	House No. 24, Z-Block, Model Town, Bahawalnagar	063-9330002
Assistant Director	Mohallah Mandi Town, House No.198 Block No. 12 Near Pracha Filling Station, Jhang Road, Bhakkar	0453-9200338
Assistant Director	Street No.4 2nd Floor Mohallah Shumali Chah Loharn Behkari Road, Chakwal	0543-554086
Assistant Director	House No.720-A Gulberg Colony, Kasur	049-2723615
Assistant Director	House No. 190, Employees Colony, Layyah	0606-920273
Assistant Director	Gallah Huntar Pura, Opposite Larri Adda, Christian Town, Sialkot	052-4291219
Assistant Director	Opposite Govt. Vocational College, Nabi Pura, Hiran Minar Road, Sheikhupura	056-3791770